

# 10,570 SF

**21238 68th Ave S**  
**Kent, WA 98032 USA**

Prologis Park O'Donnell 1



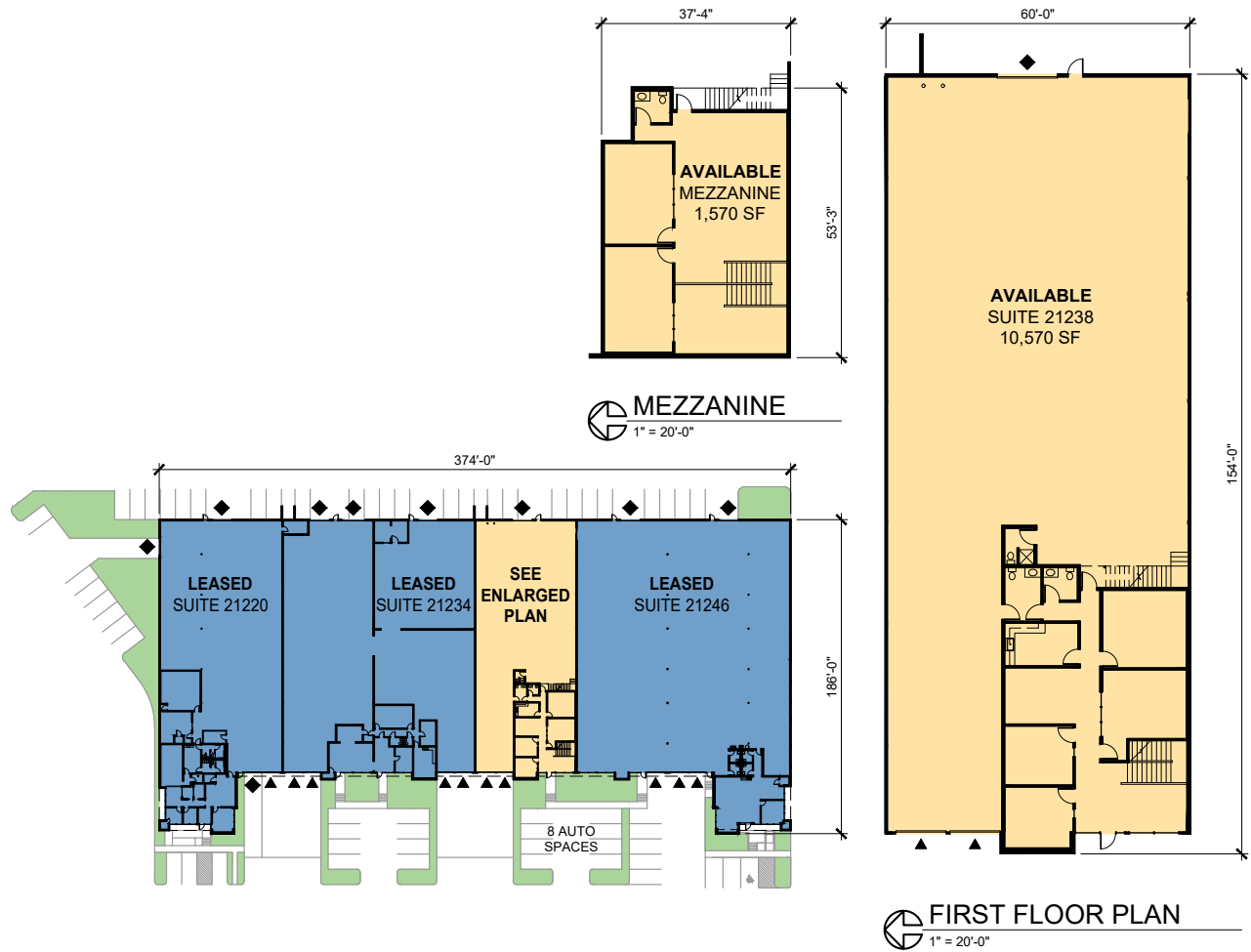
- West Valley Highway Exposure.
- Prime Kent Valley Location: Last-mile industrial site with excellent regional access.
- Property Features: Four-building project totaling over 300,000 SF with concrete aprons and abundant car parking.
- Zoning: Designated I1 (City of Kent), ideal for a range of industrial and distribution uses.

## Property Features

Available Space	10,570 SF
Office SF	3,440 SF
First Floor Office SF	1,870 SF
Second Floor Office SF	1,570 SF
Clear Height	24'
Dock Doors	2
Drive-in Doors	1
Lighting	LED Motion Sensor
Date Available	Now



Unlock the full potential of your warehouse with one strategic, single-source partner.



Neil Walter Company  
Tony Kusak, SIOR  
tkusak@neilwalter.com  
ph +1 206 787 1465

Neil Walter Company  
John Bledsoe  
jbledsoe@neilwalter.com  
ph +1 206 787 1460

Prologis  
Kimberley Nemethy  
KNemethy@prologis.com  
ph +1 206 414 7616