

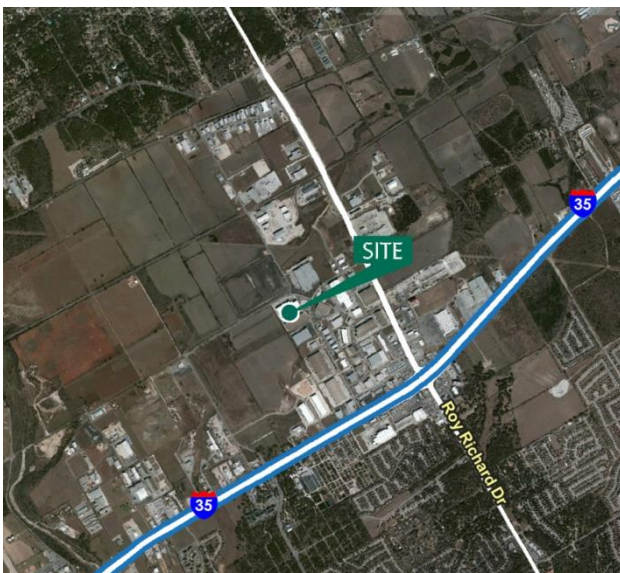
# 30,610 SF

## Industrial Space For Lease



## Prologis Tri-County Parkway

6417 Tri-County Parkway, Suite 100  
Schertz, TX 78154 USA



### LOCATION

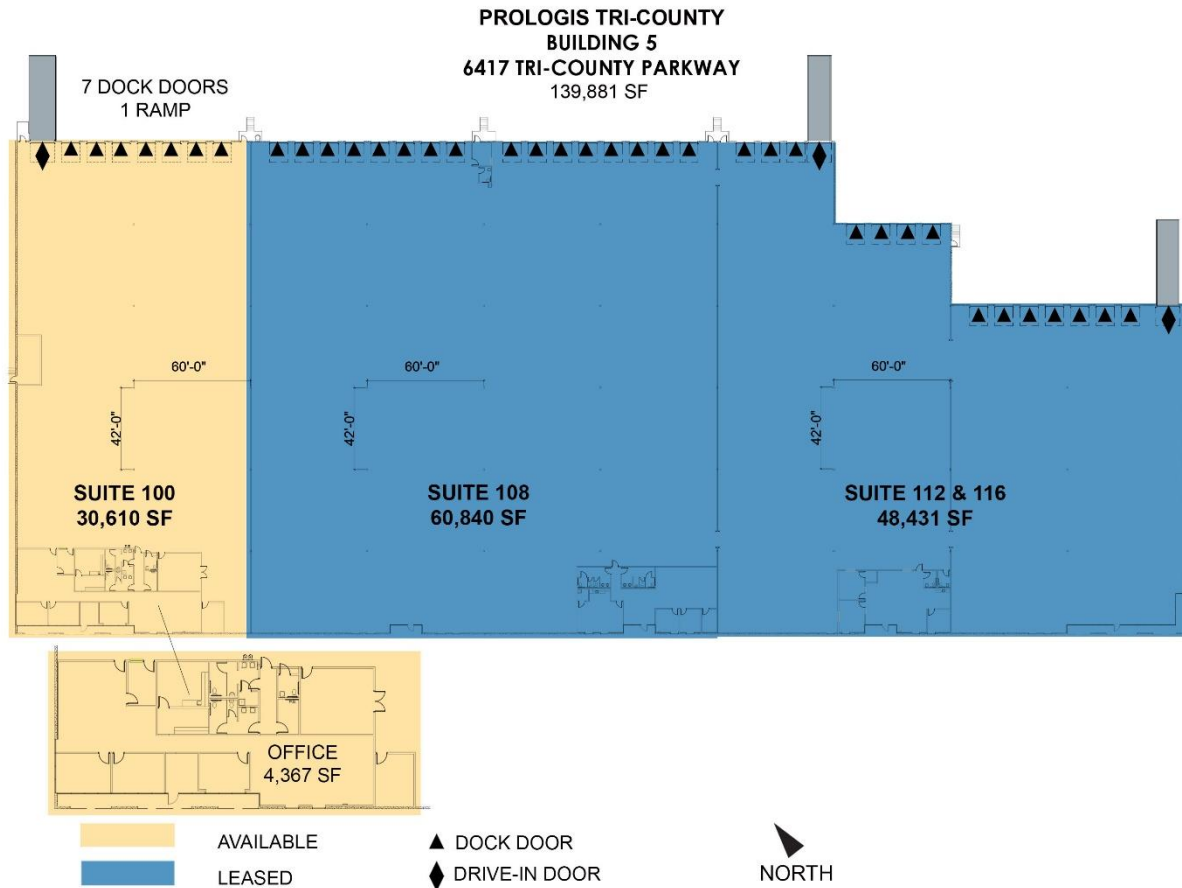
- Conveniently located along IH-35 just North of San Antonio with short commute to Austin.
- Designated Foreign Trade Zone site
- Triple Freeport Exempt building

### FACILITY

- 139,881 SF total building size
- 30,610 SF available
- 4,367 office space
- 31' clear height
- Seven (7) dock high doors
- One (1) ramp
- ESFR sprinkler system
- Rear loading facility

# 30,610 SF

## Industrial Space For Lease



**CBRE, Inc.**

**Rob Burlingame, CCIM**  
rob.burlingame@cbre.com  
ph +1 210 507 1123  
cell +1 210 885 3730  
200 Concord Plaza  
Suite 800  
San Antonio, TX 78216 USA

**CBRE, Inc.**

**Joshua Aguilar**  
joshua.aguilar@cbre.com  
ph +1 210 253 6049  
cell +1 915 740 0556  
200 Concord Plaza  
Suite 800  
San Antonio, TX 78216 USA

**CBRE, Inc.**

**Brad O'Neill**  
brad.oneill@cbre.com  
ph +1 210 253 6070  
cell +1 915 373 3467  
200 Concord Plaza  
Suite 800  
San Antonio, TX 78216 USA

**Prologis**

**Eduardo Gonzalez**  
egonzalez@prologis.com  
ph +1 210 352 6806  
cell +1 210 262 8349  
200 E Grayson St  
Suite 116  
San Antonio, TX 78215 USA