

37,500 SF



Prologis Park Trans-Pacific 3



4200C Industry Drive East
Fife, WA 98424 USA



LOCATION

- Union Pacific Rail Service
- 3 Miles to the Port of Tacoma main gate
- Immediate access to Interstate 5
- Close proximity to Kent Valley and Seattle
- No City of Fife B&O taxes

FACILITY

- Space size: ±37,500 SF
- Office size: 3,505 SF
 - First floor: 2,629 SF
 - Second floor: 876 SF
- Grade level doors: 1
- Dock high doors: 6
- Rail doors: 2

ADVANTAGES AND AMENITIES

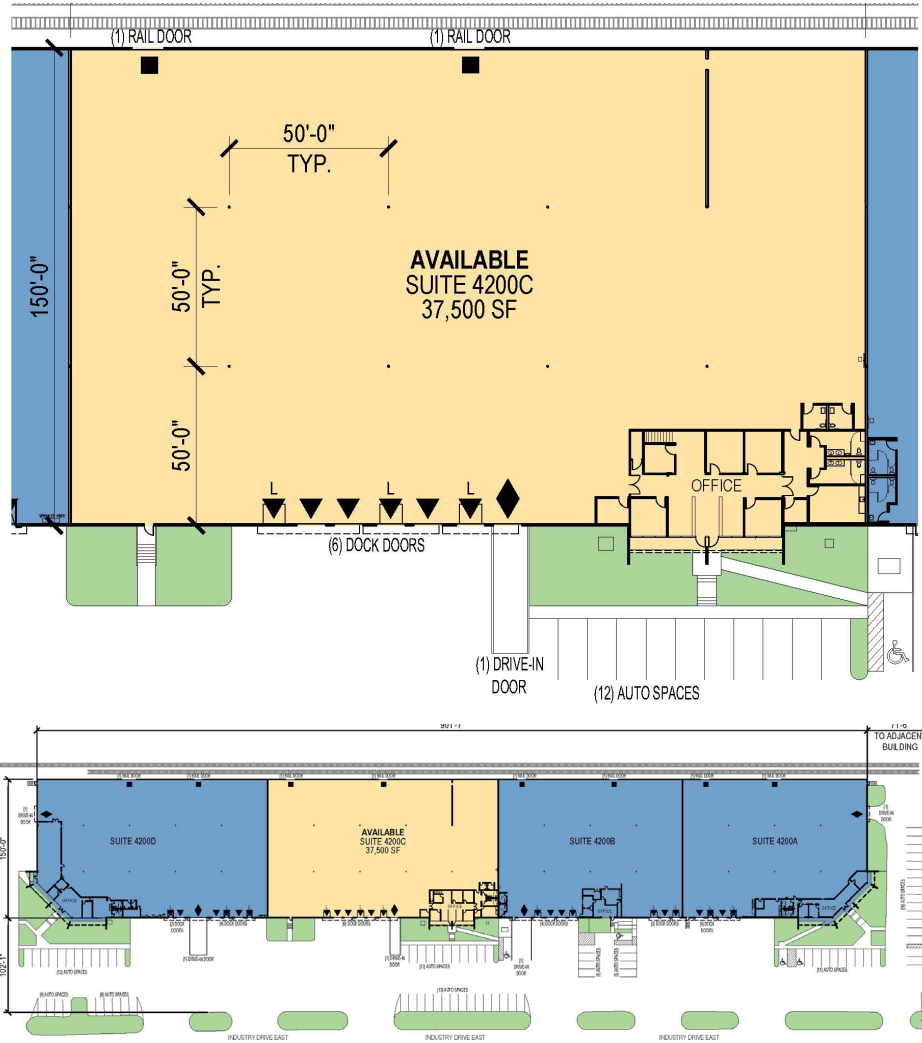
- Use Prologis Essentials to help with pricing on forklifts and racking for your move-in

Prologis Essentials: your single-source service for efficient move-in and operations at [prologisessentials.com](https://www.prologisessentials.com)

37,500 SF



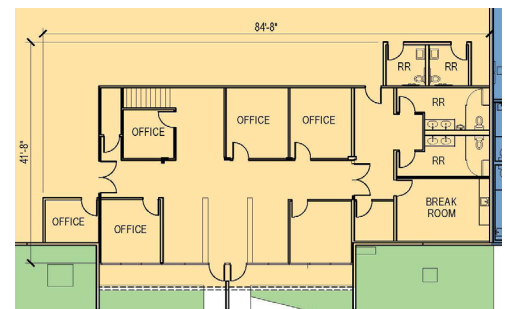
Prologis Park Trans-Pacific 3



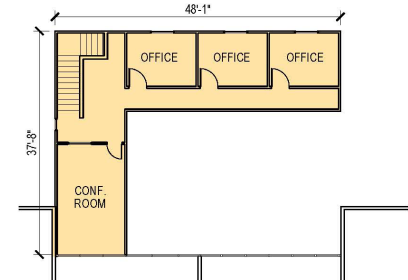
LEGEND:

- ▼ DOCK DOOR
- L = PIT LEVELER
- LE = EDGE OF DOCK LEVELER
- DR = DOCK RESTRAINT
- ◆ DRIVE-IN DOOR
- RAIL DOOR
- AVAILABLE AREA
- LEASED AREA
- LAND

First Floor



Second Floor



CBRE, Inc.
 Monte Decker, CCIM
 monte.decker@cbre.com
 ph +1 253 596 0041
 710 Market Street
 Tacoma, WA 98402 USA

Prologis
 Kimberley Nemethy
 knemethy@prologis.com
 ph +1 206 414 7616
 33930 Weyerhaeuser Way S
 Suite 100
 Federal Way, WA 98001 USA

© 2025 CBRE, Inc. All rights reserved. This information has been obtained from sources believed reliable but has not been verified for accuracy or completeness. You should conduct a careful, independent investigation of the property and verify all information. Any reliance on this information is solely at your own risk. CBRE and the CBRE logo are service marks of CBRE, Inc. All other marks displayed on this document are the property of their respective owners, and the use of such marks does not imply any affiliation with or endorsement of CBRE SD 1.28.25

Prologis Essentials: your single-source service for efficient move-in and operations at prologisessentials.com

No warranty or representation, expressed or implied, is made as to the accuracy of the information contained herein, and same is submitted subject to error and omissions.