

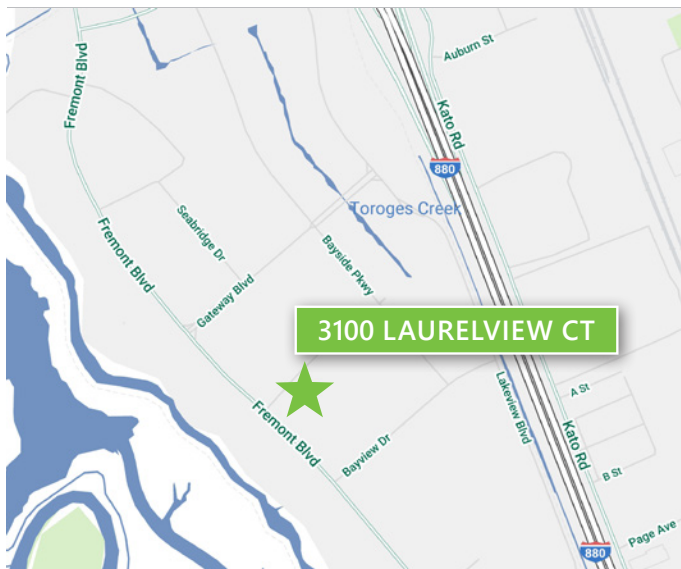
±14,400 SF

R&D Space For Lease



Prologis Park Bayside

3100 Laurelview Court
Fremont, CA 94538



LOCATION

- Situated in the desirable Bayside area of Fremont
- Easy access to I-880, I-680, and Hwy 237
- Minutes from new Warm Springs BART station

FACILITY

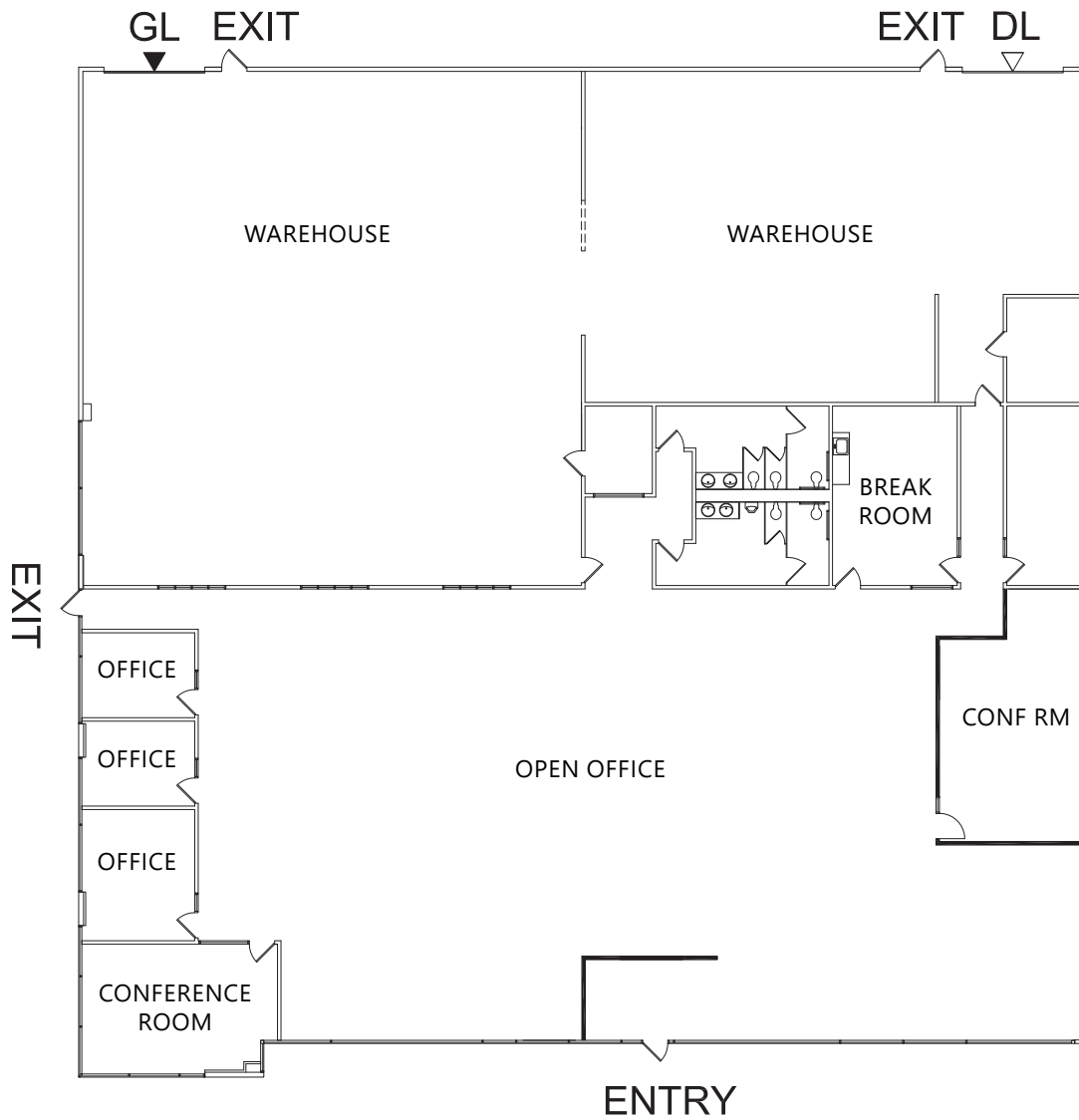
- R&D Space with Flexible Interiors
- 50% Office and 50% Warehouse
- R&D/Assembly, Office, Warehouse Space
- 800 Amps @ 277/480V
- Extensive Window Line
- 3.3/1,000 Parking Ratio
- Dock and Grade Level Loading

ADVANTAGES AND AMENITIES

- New park amenities in place with additional amenities on the horizon
- Expansion opportunities available within the park.

±14,400 SF

R&D Space For Lease



- ▽ DOCK HIGH DOOR
- ▼ GRADE LEVEL DOOR

NOT TO SCALE



www.prologis.com www.cbre.us

±14,400 SF

R&D Space For Lease



Amenities Map



CBRE

www.prologis.com www.cbre.us

±14,400 SF

R&D Space For Lease



FOR MORE INFORMATION PLEASE CONTACT:

Thomas Taylor
Executive Vice President
Lic. 00944083
thomas.taylor@cbre.com
ph +1 408 453 7417

Sherman Chan
Senior Vice President
Lic. 01046769
sherman.chan@cbre.com
ph +1 408 453 7488

Vince Machado
Executive Vice President
Lic. 01317553
vince.machado@cbre.com
ph +1 408 453 7411

Matthew Taylor
Senior Vice President
Lic. 01897355
matthew.taylor@cbre.com
ph +1 408 453 7469

CBRE

www.prologis.com www.cbre.us

© 2020 CBRE, Inc. All rights reserved. This information has been obtained from sources believed reliable, but has not been verified for accuracy or completeness. You should conduct a careful, independent investigation of the property and verify all information. Any reliance on this information is solely at your own risk. CBRE and the CBRE logo are service marks of CBRE, Inc. All other marks displayed on this document are the property of their respective owners. Photos herein are the property of their respective owners. Use of these images without the express written consent of the owner is prohibited.