

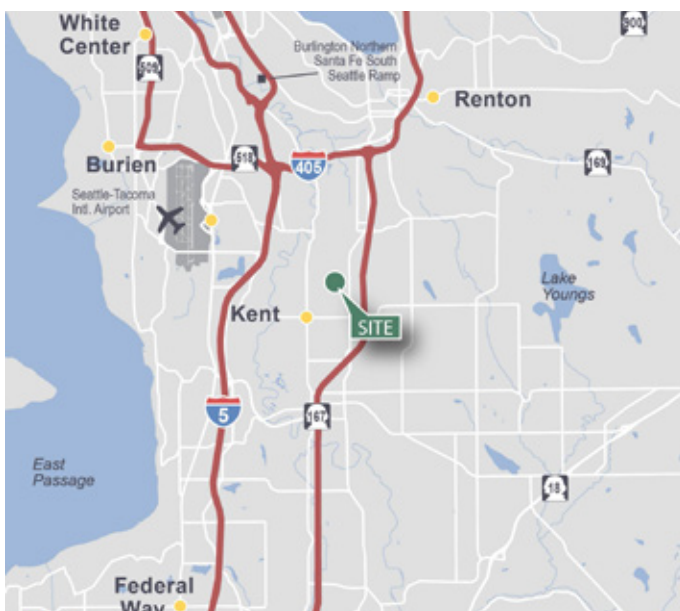
28,500 SF

Industrial Space For Lease



Prologis Park Kent

7828 S. 200th Street
Kent, Washington 98032



 [CLICK HERE TO VIEW VIRTUAL TOUR!](#)

LOCATION

- Great access to East Valley Highway
- Less than 10 miles to SeaTac International Airport

FACILITY

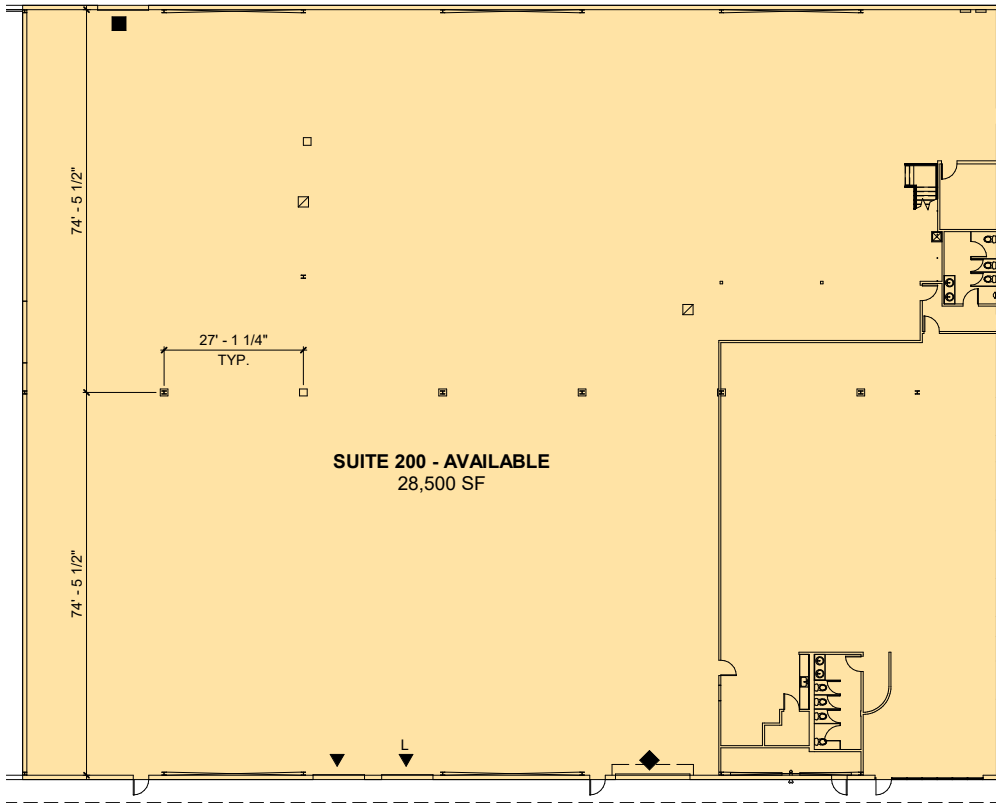
- 28,500 SF total with 5,205 SF of office space
- 22' Clear Height
- 2 Dock High Doors
- 1 Oversized Grade Level Door
- 600 amps of 120V
- Available now

ADVANTAGES AND AMENITIES

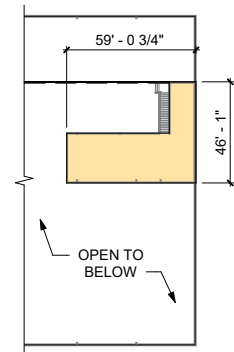
- Large truck court
- End cap space
- Small fenced yard area

28,500 SF

Industrial Space For Lease



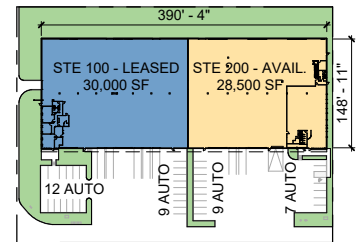
SUITE 200 - AVAILABLE
28,500 SF



MEZZANINE
1" = 50'-0"
NORTH



AVAILABLE OFFICE & WAREHOUSE
3/64" = 1'-0"



S 200TH ST.

SITE PLAN
1" = 150'-0"
NORTH

- LEGEND:**
- ▲ DOCK POSITION
 - ▲ DOCK POSITION W/ LEVELER
 - △ FUTURE DOCK POSITION
 - ◆ DRIVE-IN DOOR
 - RAIL-LEVEL DOOR
 - LAND
 - LEASED AREA
 - AVAILABLE AREA

NEWMARK

Newmark Knight Frank

TAYLOR HOFF, SIOR

taylor.hoff@ngkf.com

ph +1 425 362 1388

10900 NE 4th Street, Suite 1430

Bellevue, WA 98004

Newmark Knight Frank

THAD MALLORY, SIOR

thad.mallory@ngkf.com

ph +1 425 362 1410

10900 NE 4th Street, Suite 1430

Bellevue, WA 98004

Newmark Knight Frank

CAM WARREN

cam.warren@ngkf.com

ph +1 425 362 1395

10900 NE 4th Street, Suite 1430

Bellevue, WA 98004

Prologis

LUCCA MERLINO

lmerlino@prologis.com

ph +1 206 414 7621

12720 Gateway Drive, Suite 110

Tukwila, WA 98168