



# Prologis Cheyenne Distribution Center 6

N. Lamb Blvd. & Alto Ave.

Las Vegas, NV 89115

±72,875 Square Feet Available  
Rear Loaded Distribution Facility

[www.prologis.com](http://www.prologis.com) [www.cbre.us](http://www.cbre.us)

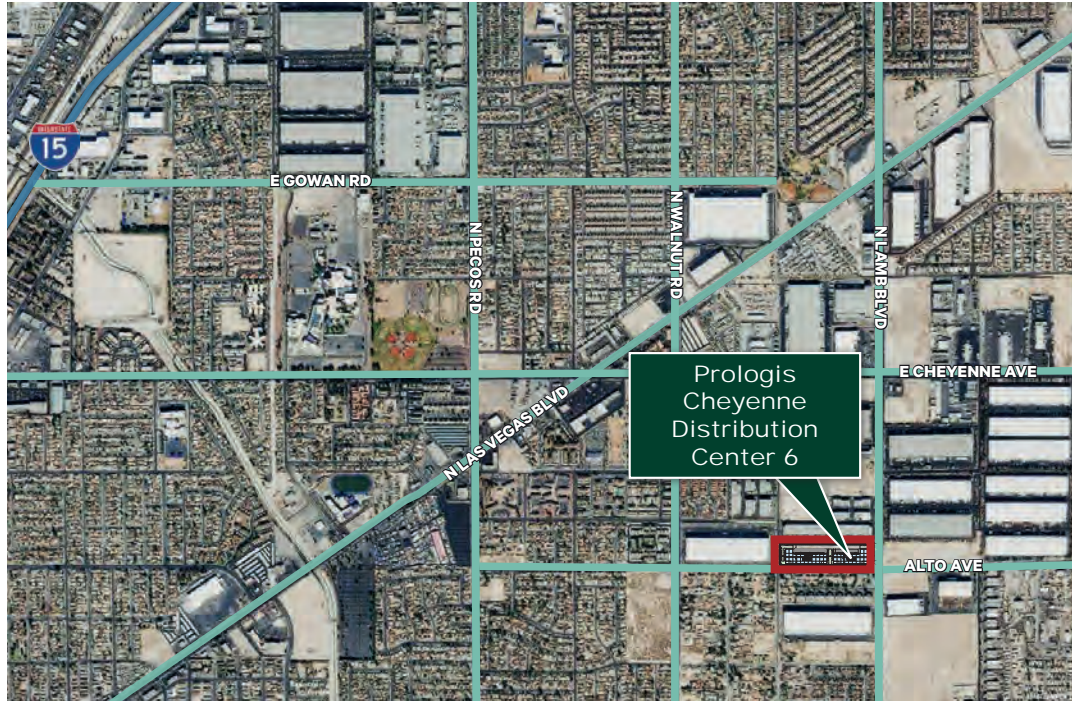




# Prologis Cheyenne Distribution Center 6

N. Lamb Blvd. & Alto Ave.

Las Vegas, NV 89115 USA



±72,875

square feet available

Less than 3 miles

from the I-15 freeway

Under 12 miles

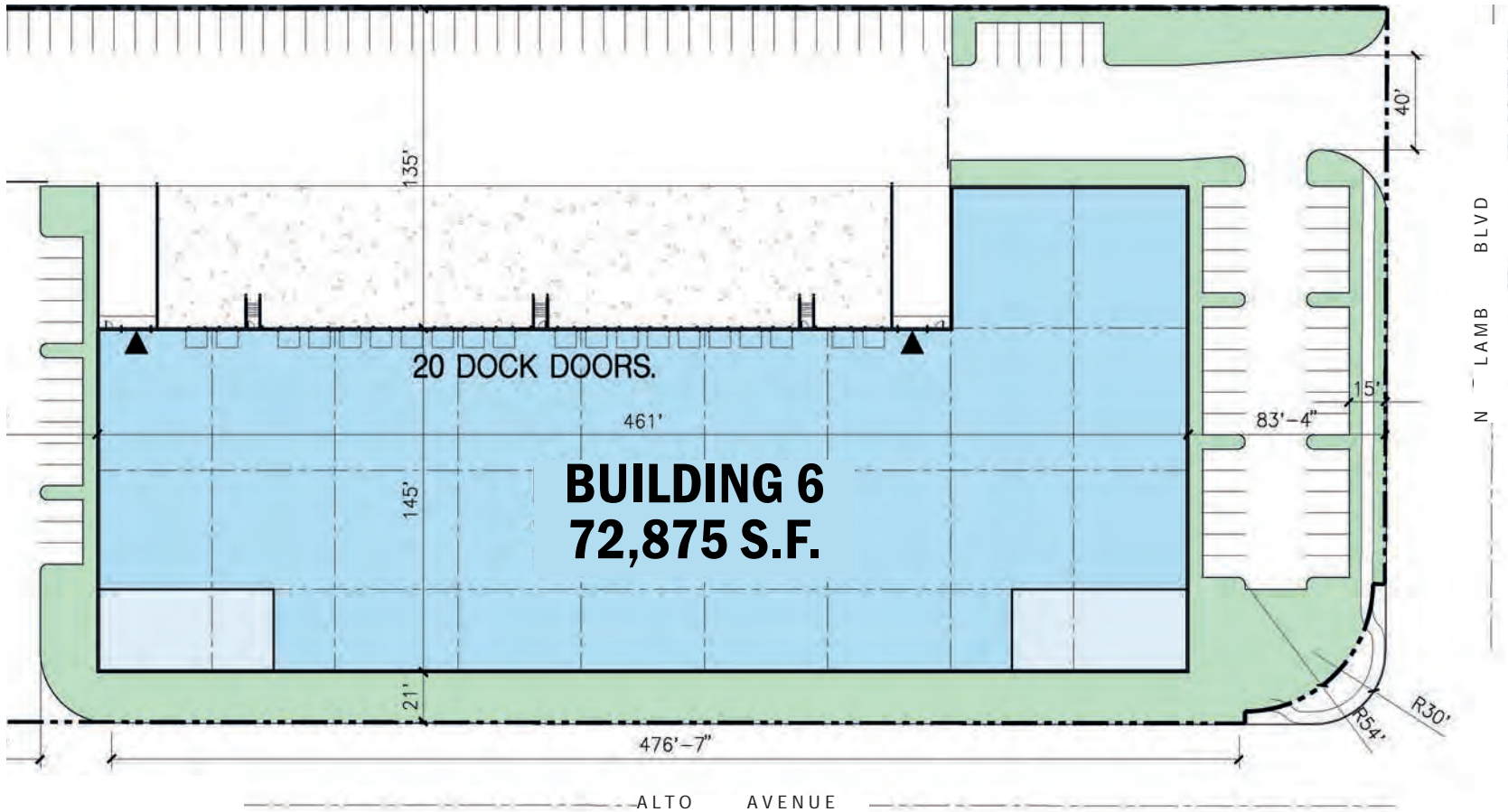
to the Las Vegas Strip & McCarran International Airport

## LOCATION

- Located in the highly desired North Las Vegas submarket which has become the epicenter of e-commerce/logistics for the southwest region
- Zoned: Designed Manufacturing (M-D)
- Clark County jurisdiction
- Professionally owned and managed by Prologis

## FACILITY

- ±72,875 SF rear loaded distribution facility
- 20 dock doors (9'x10')
- 2 ramp to grade doors (12'x14')
- 32' minimum clear height
- 56' x 60' typical column spacing with 60' speed bays - TBD
- 135' all concrete truck courts
- ESFR Sprinkler System
- R-38 roof batt insulation
- Electrical capacity designed to provide 4,000 amp main service to building (expandable)
- Extended joint slabs
- Parking Ratio: 1/1,000 SF







Prologis  
Cheyenne  
Distribution  
Center 6





**Garrett Toft, SIOR**  
Vice Chairman  
garrett.toft@cbre.com  
Lic. BS.0061824  
+1 702 369 4868

**Sean Zaher, SIOR**  
Senior Vice President  
sean.zaher@cbre.com  
Lic. S.0175473  
+1 702 369 4863

**CBRE, Inc.**  
8548 Rozita Lee Ave.  
Suite 200  
Las Vegas, NV 89113 USA

**Prologis - Mathias Hughes**  
Vice President - Investment Officer  
mhughes@prologis.com  
Lic. S.0073128  
1 775 829 3035  
3883 Howard Hughes Pkwy., Ste. 850  
Las Vegas, NV 89169 USA

**Prologis - Lisa Brady**  
Vice President - Market Officer  
lbrady@prologis.com  
Lic. B.1002217  
1 702 891 9141  
3883 Howard Hughes Pkwy., Ste. 850  
Las Vegas, NV 89169 USA

www.prologis.com | NYSE: PLD  
Twitter: @Prologis

Prologis is the leading owner, operator and developer of industrial logistics real estate with approximately 1 billion square feet (93 million square meters) owned and under management in 20 countries on four continents.

© 2023 CBRE, Inc. All rights reserved. This information has been obtained from sources believed reliable but has not been verified for accuracy or completeness. CBRE, Inc. makes no guarantee, representation or warranty and accepts no responsibility or liability as to the accuracy, completeness, or reliability of the information contained herein. You should conduct a careful, independent investigation of the property and verify all information. Any reliance on this information is solely at your own risk. CBRE and the CBRE logo are service marks of CBRE, Inc. All other marks displayed on this document are the property of their respective owners, and the use of such marks does not imply any affiliation with or endorsement of CBRE. Photos herein are the property of their respective owners. Use of these images without the express written consent of the owner is prohibited.