

# ±24,943 SF

Industrial Space For Lease

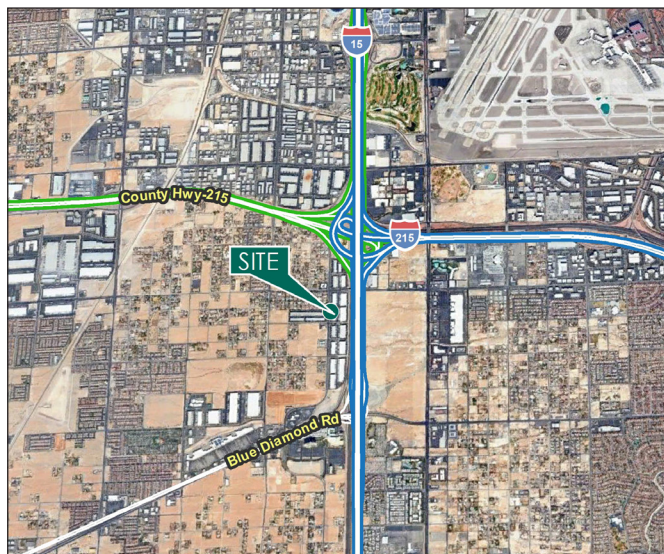


## Prologis Warm Springs Distribution Center



7470 Dean Martin Drive, Suite 110

Las Vegas, NV 89139 USA



**Your single-source service for efficient move-in and operations: [prologisessentials.com](https://www.prologisessentials.com)**

### LOCATION

- Immediately west of Interstate 15
- Convenient access to I-15 via Blue Diamond Rd Interchange
- Zoned: Industrial Park (IP)
- Planned Use: Designed Manufacturing District
- After-hours roaming security

### FACILITY

- ±24,943 SF Total SF
- ±8,010 SF of Office
- HVAC in Office; Evaporative Coolers in Warehouse
- Concrete Tilt-up Construction
- 20' Clear Height (minimum)
- Eight (8) Dock Doors
- Four (4) Grade Doors
- Fire Sprinkler System (.33 GPM/3,000)
- Power 3-Phase Power, 277/480 V, ±200 Amps
- Electricity: NV Energy
- Telephone: Cox Communications and Century Link

# ±24,943 SF

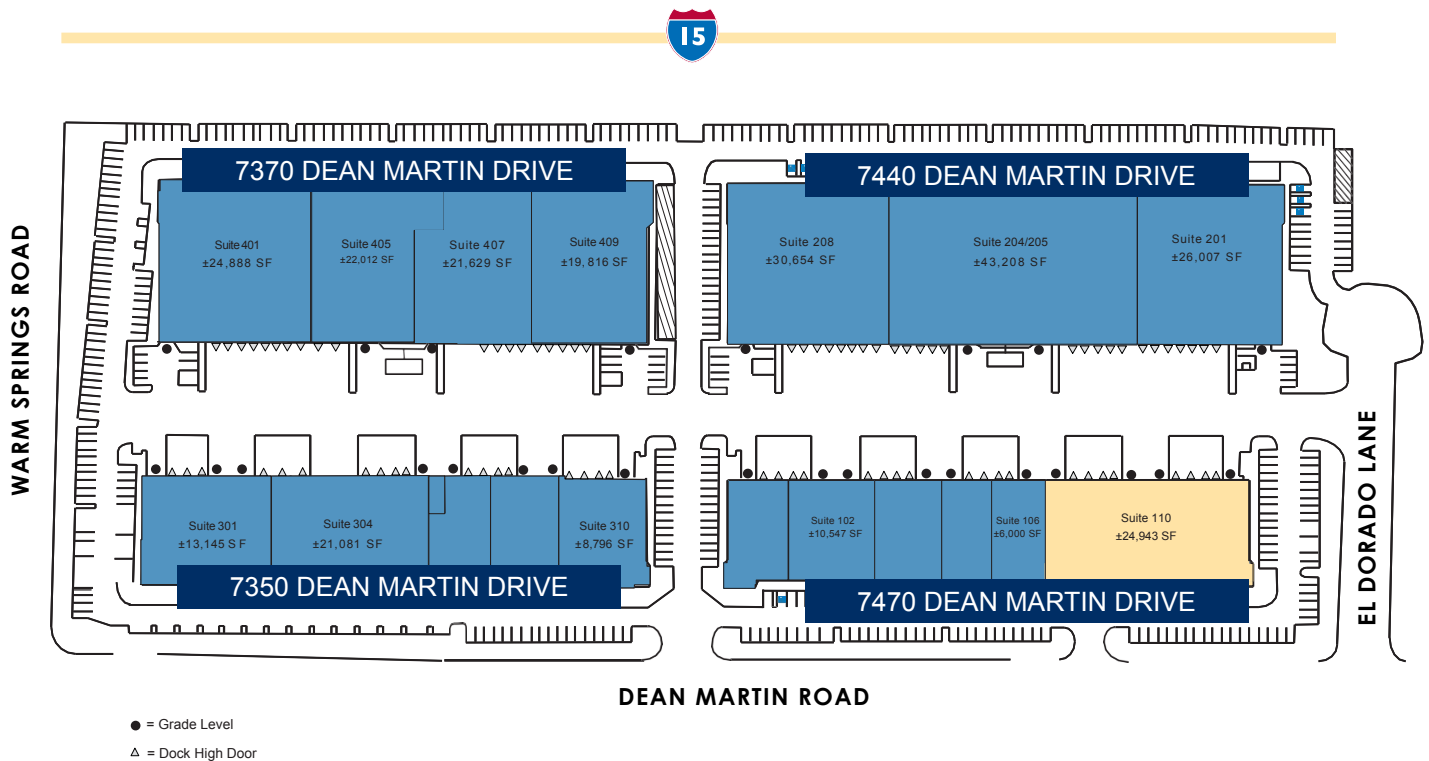
## Industrial Space For Lease



# Prologis Warm Springs Distribution Center

■ = Leased    ■ = Available

For illustration purposes only. Not to scale.



Colliers  
**Chris Lane, SIOR, CCIM**  
Executive Vice President  
chris.lane@colliers.com  
ph +1 702 836 3728  
cell +1 702 808 4956  
6795 Agilysys Way  
Suite 210  
Las Vegas, NV 89113 USA  
License # NV-S.0166896

Colliers  
**Spencer Pinter**  
Executive Vice President  
spencer.pinter@colliers.com  
ph +1 702 836 3776  
cell +1 702 768 1856  
6795 Agilysys Way  
Suite 210  
Las Vegas, NV 89113 USA  
License # NV-S.0039013

Colliers  
**Paul Sweetland, SIOR**  
Vice Chairman  
paul.sweetland@colliers.com  
ph +1 702 836 3750  
cell +1 602 499 1272  
6795 Agilysys Way  
Suite 210  
Las Vegas, NV 89113 USA  
License # NV-S.0043604

Prologis  
**Renee Carroll**  
Senior Leasing Manager  
rcarroll@prologis.com  
ph +1 702 891 9503  
cell +1 702 844 5282  
3883 Howard Hughes Pkwy  
Suite 850  
Las Vegas, NV 89169 USA

# ±24,943 SF

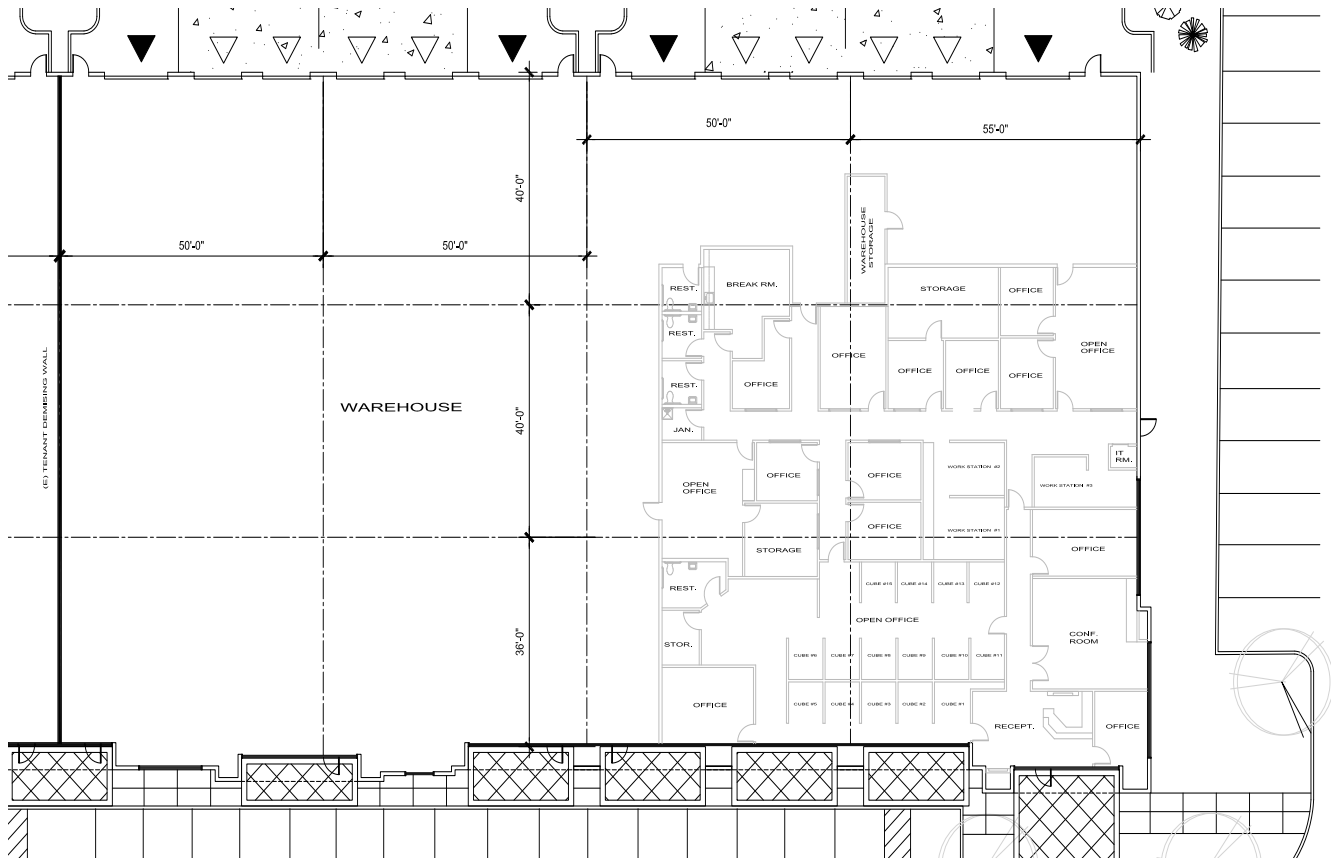
## Industrial Space For Lease



# Prologis Warm Springs Distribution Center

△ = Dock Doors    ▲ = Grade Doors

*For illustration purposes only. Not to scale.*



Colliers  
**Chris Lane, SIOR, CCIM**  
Executive Vice President  
chris.lane@colliers.com  
ph +1 702 836 3728  
cell +1 702 808 4956  
6795 Agilysys Way  
Suite 210  
Las Vegas, NV 89113 USA  
License # NV-S.0166896

Colliers  
**Spencer Pinter**  
Executive Vice President  
spencer.pinter@colliers.com  
ph +1 702 836 3776  
cell +1 702 768 1856  
6795 Agilysys Way  
Suite 210  
Las Vegas, NV 89113 USA  
License # NV-S.0039013

Colliers  
**Paul Sweetland, SIOR**  
Vice Chairman  
paul.sweetland@colliers.com  
ph +1 702 836 3750  
cell +1 602 499 1272  
6795 Agilysys Way  
Suite 210  
Las Vegas, NV 89113 USA  
License # NV-S.0043604

Prologis  
**Renee Carroll**  
Senior Leasing Manager  
rcarroll@prologis.com  
ph +1 702 891 9503  
cell +1 702 844 5282  
3883 Howard Hughes Pkwy  
Suite 850  
Las Vegas, NV 89169 USA