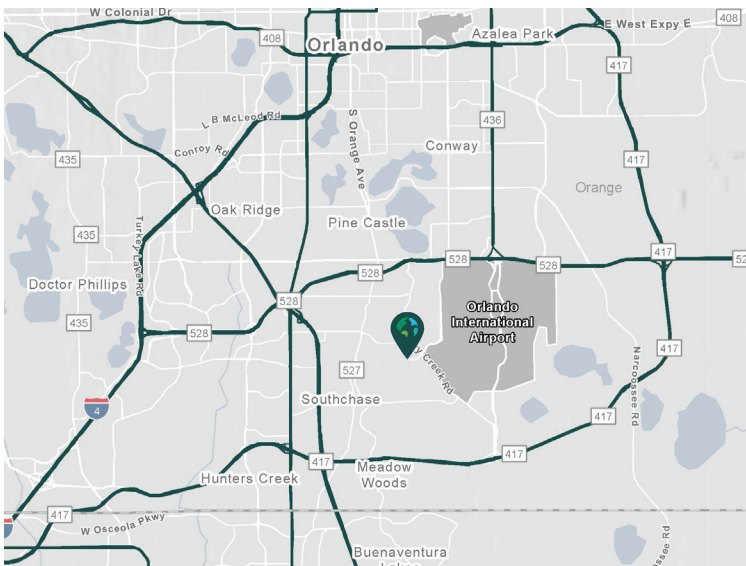


44,470 SF

2487 Tradeport Drive, Suite 200  
Orlando, FL 32824

Prologis Park at AIPO



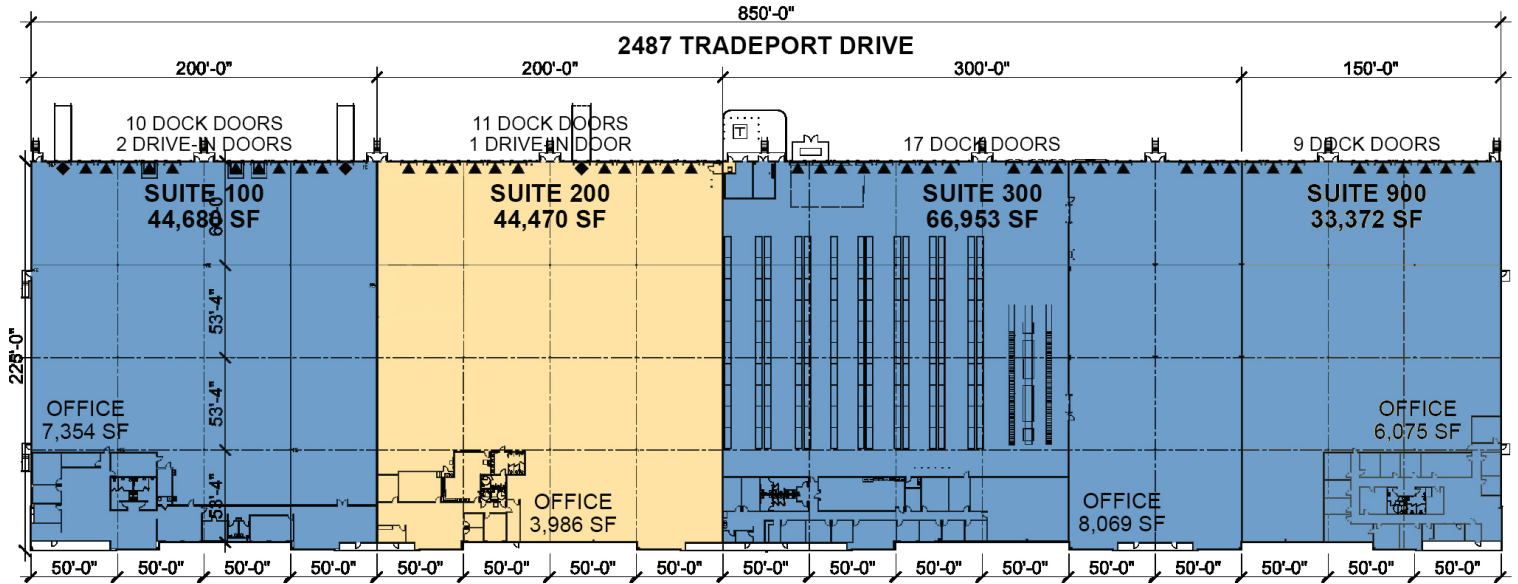
- South of the Beachline Expressway (SR 528) and adjacent to Orlando International Airport.
- Excellent access to Sand Lake Road, S. Orange Avenue and Orange Blossom Trail (US 441).
- Approved Foreign Trade Zone.

## Property Features

Available Space	44,470 SF
Office SF	3,986 SF
Clear Height	28'
Column Spacing	53' - 60' x 50'
Speed Bay	60'
Dock Doors	11
Drive-In Door	1
Truck Court	165'
Car Parking Spaces	193
Lighting	LED
Sprinkler System	ESFR



Unlock the full potential of your warehouse with one strategic, single-source partner.



**LEGEND**

- AVAILABLE
- LEASED
- DOCK DOOR
- DRIVE-IN DOOR



**AIPO**  
Paul Sabga  
psabga@aipo.net  
ph +1 407 927 3981

**Prologis**  
John Kruszewski  
jkruszewski@prologis.com  
ph +1 407 244 7109

PROLOGIS  
AIPO 2005

2487  
TRADEPORT DRIVE  
ORLANDO, FLORIDA

SUITE: 200

OFFICE: 3,986 S.F.  
WAREHOUSE: 40,484 S.F.

TOTAL AREA: 44,470 S.F.

FOOTPRINT: 44,470 S.F.

CLEAR HEIGHT: 28 FEET

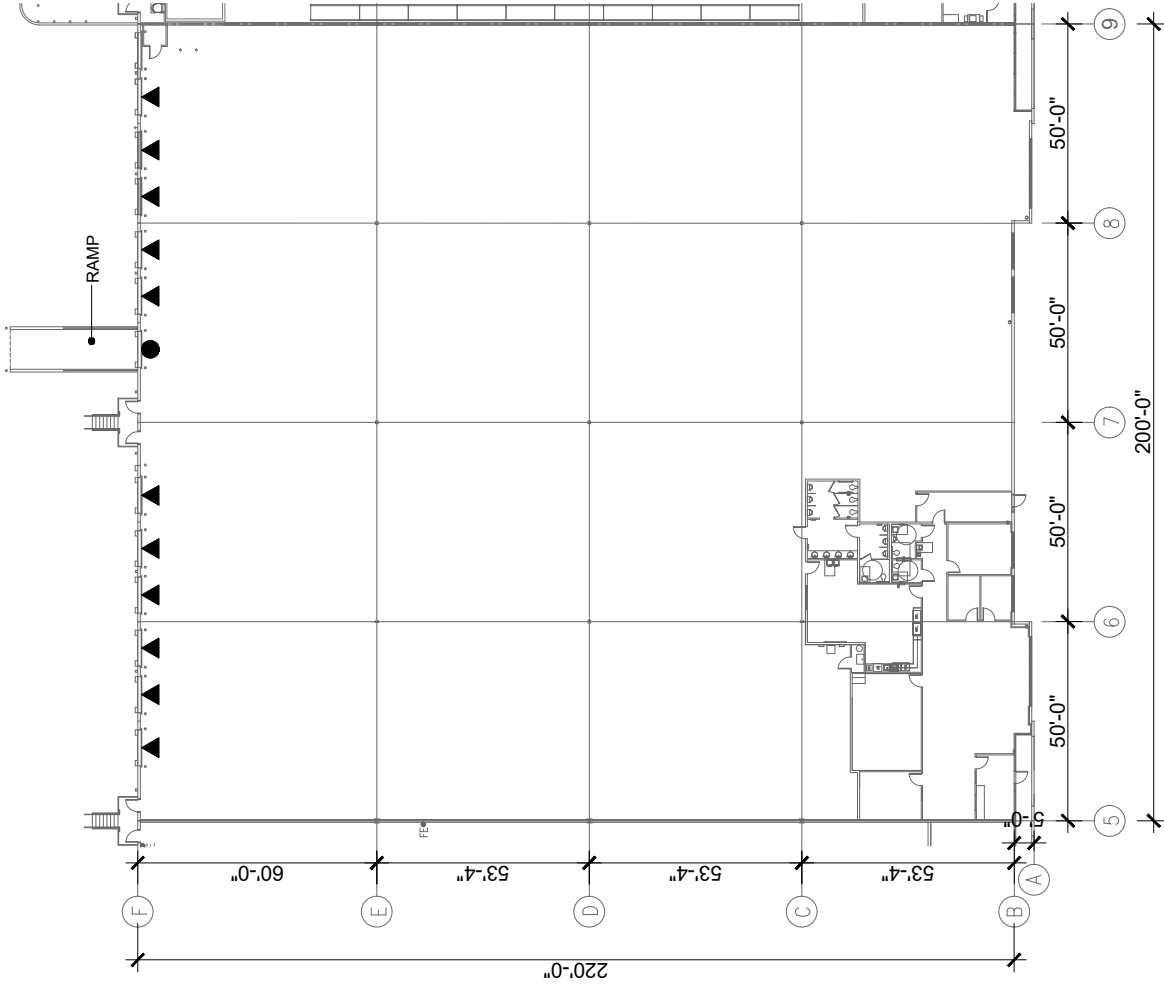
DOCK DOORS: 11

DRIVE-IN DOORS: 1

TYPICAL BAY: 53'-4" x 50'-0"



JUNE 9, 2026



**PROLOGIS  
AIPO 2005**

**2487  
TRADEPORT DRIVE  
ORLANDO, FLORIDA**

**SUITE: 200**  
**OFFICE:** 3,986 S.F.  
**WAREHOUSE:** 40,484 S.F.  
**TOTAL AREA:** 44,470 S.F.

**FOOTPRINT:** 44,470 S.F.  
**CLEAR HEIGHT:** 28 FEET  
**DOCK DOORS:** 11  
**DRIVE-IN DOORS:** 1  
**TYPICAL BAY:** 53'-4" x 50'-0"



JUNE 9, 2026

