

16,320 SF

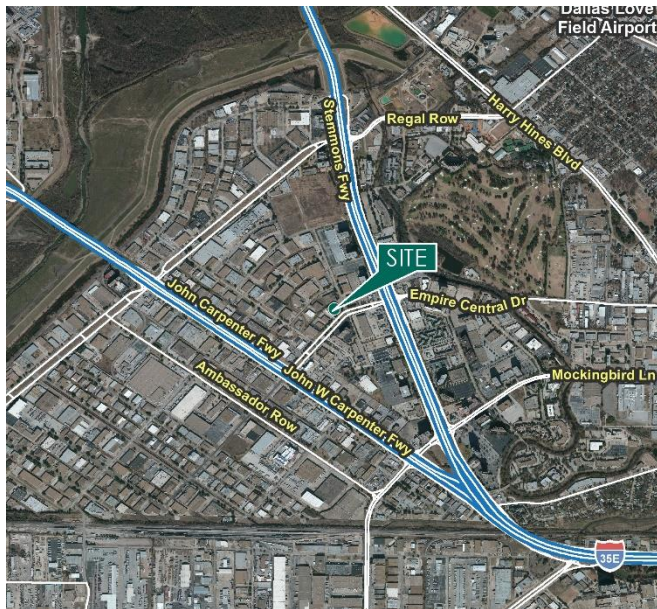
Industrial Space For Lease



Prologis Stemmons



1191 Empire Central
Dallas, TX 75247 USA



LOCATION

- Easy access to major highways including I-35E (0.3 mi.), TX-183 (0.4 mi.) and TX-12 (2.7 mi.)
- Ten minutes to Love Field

FACILITY

- 16,320 sf available
- 3,548 sf office
- 16' clear height
- 41' x 20' column spacing
- 2 (10' x 10') overhead dock doors, 1 with edge of dock leveler
-

ADVANTAGES AND AMENITIES

- 38 parking spaces
- Private truck court and parking
- Access to the [Prologis Essentials](#) platform, which includes:
 - [Operations Essentials](#)
 - [Energy Essentials](#)
 - [Workforce Essentials](#)
 - [Transportation Essentials](#)
 - [Digital Essentials](#)

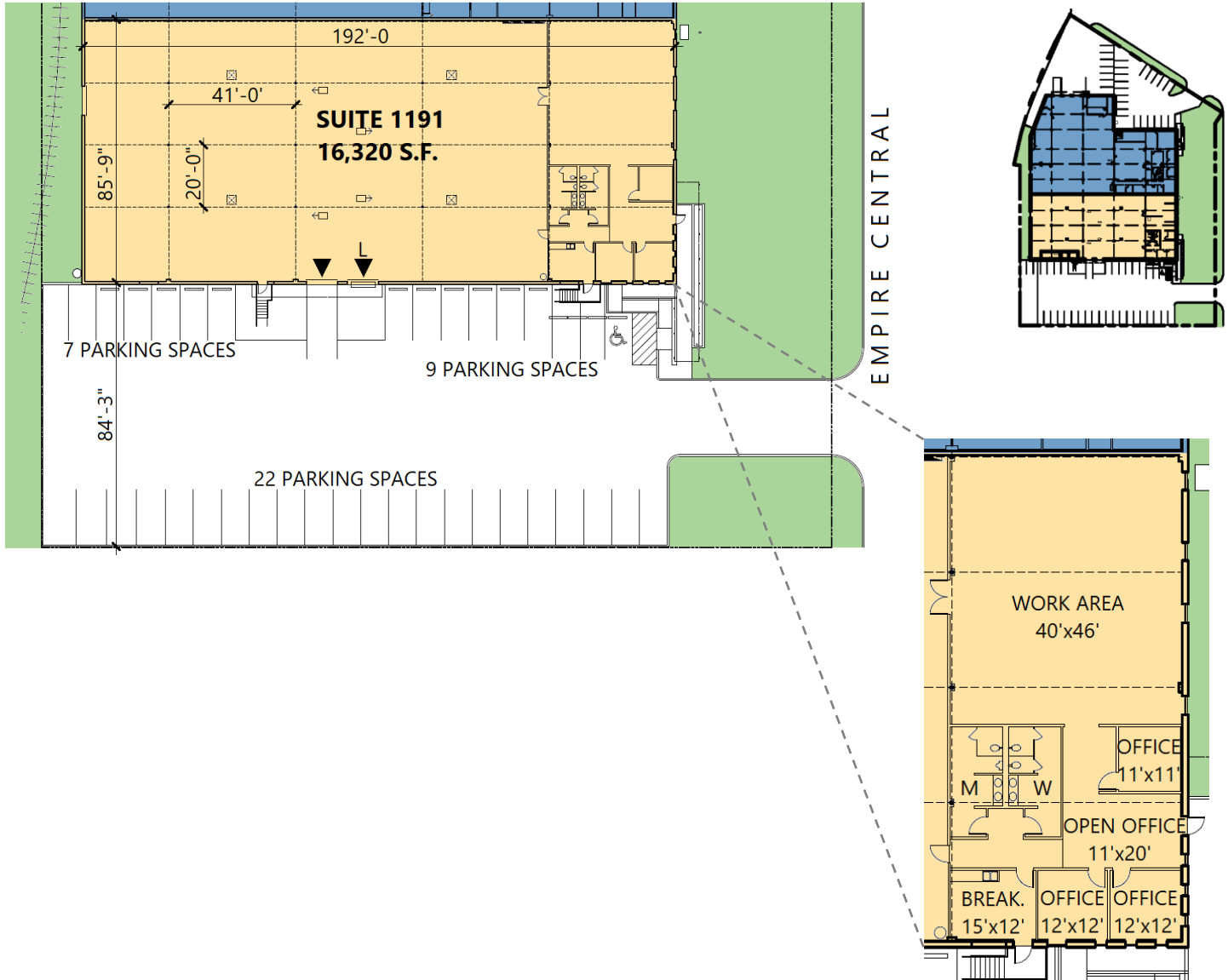
Prologis Essentials: your single-source service for efficient move-in and operations at prologisessentials.com

16,320 SF

Industrial Space For Lease



Prologis Stemmons



Prologis

Sal Giunta
sgiunta@prologis.com
ph +1972 884 9247
cell +1970 443 7574
2021 McKinney Avenue
Suite 1050
Dallas, TX 75201 USA

Prologis Essentials: your single-source service for efficient move-in and operations at prologisessentials.com

No warranty or representation, expressed or implied, is made as to the accuracy of the information contained herein, and same is submitted subject to error and omissions.