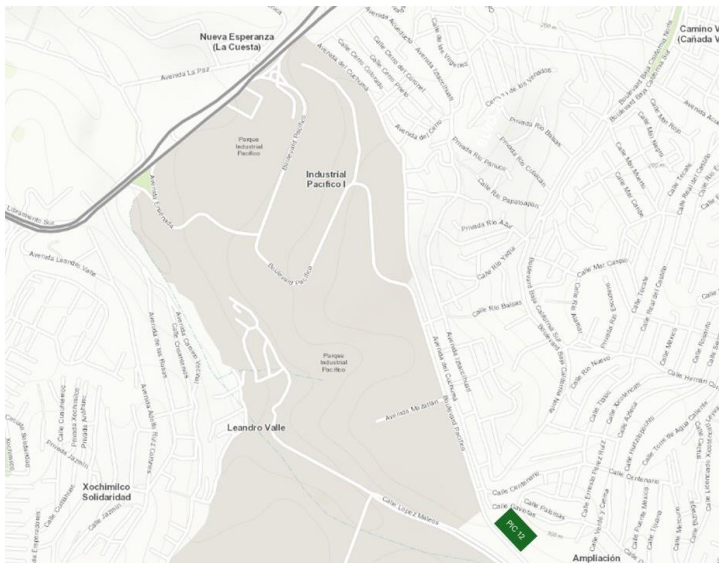


29,179 SF

Bld. Pacifico #14602
Parque Industrial Pacifico, 22185 Tijuana, B.C.

Pacifico Industrial Center 12



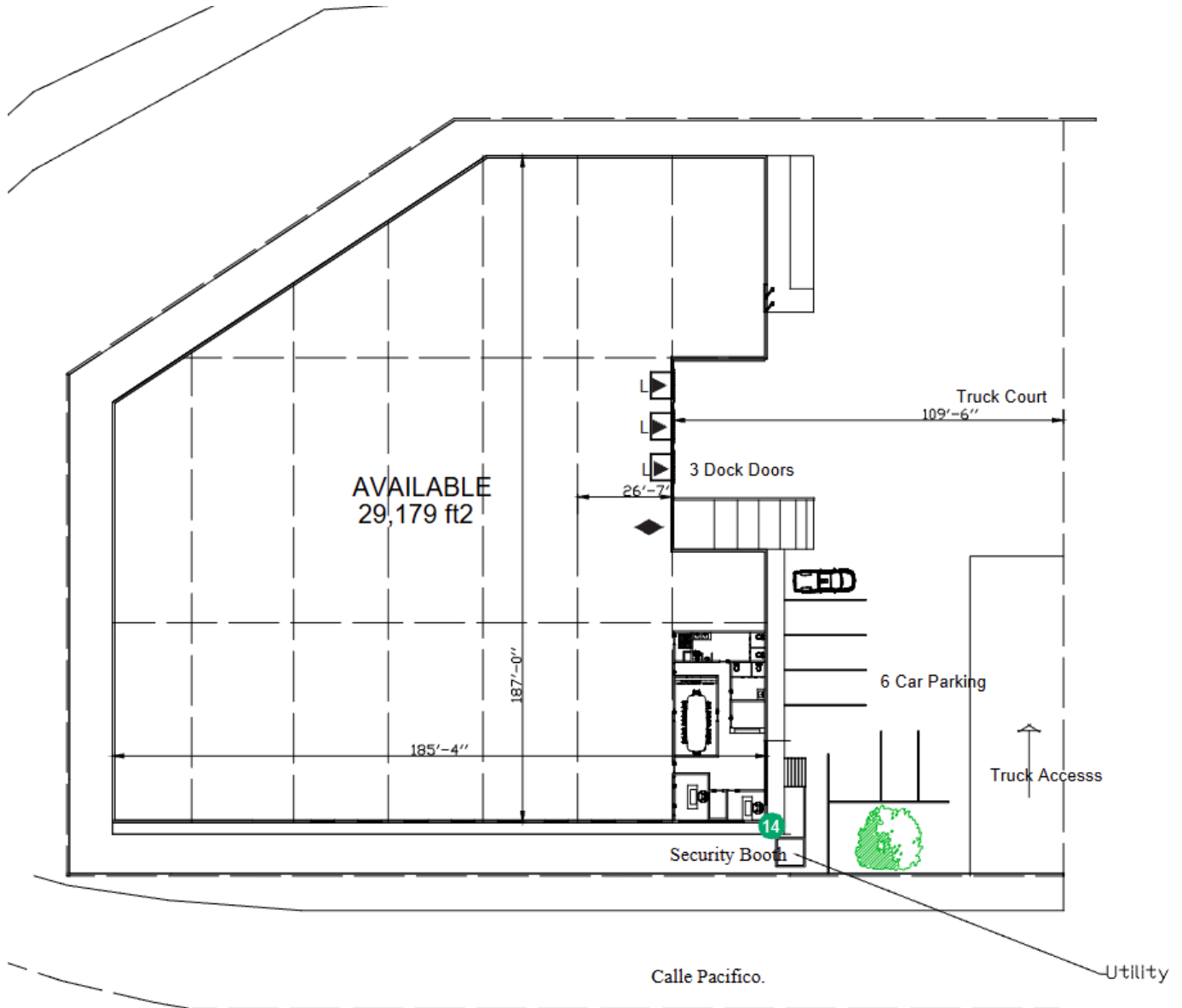
- Stand alone building with direct access to main road.
- Located in Pacifico Industrial Center.
- Within close proximity to high capacity electrical substation.

Property Features

Available Space	29,179 SF
Office Space	1,385 SF
Clear Height	26'
Dock Doors	3
Drive-in Doors	1
Car Parking Spaces	6
Electrical Capacity	150 KVAs
FPS	Hoses and Cabinets
Lighting	LED Motion Sensor



Unlock the full potential of your warehouse with one strategic, single-source partner.



For more information, contact:

Genaro A. Lopez
Director, Market Officer
glopez@prologis.com
m +52 664 387 8493