

# 207,051 SF

Industrial Space For Lease



## Prologis Meadowvale Distribution Centre 1



3255 Argentia Road, Unit 102  
Mississauga, ON L5N 0G1 CANADA

### LOCATION

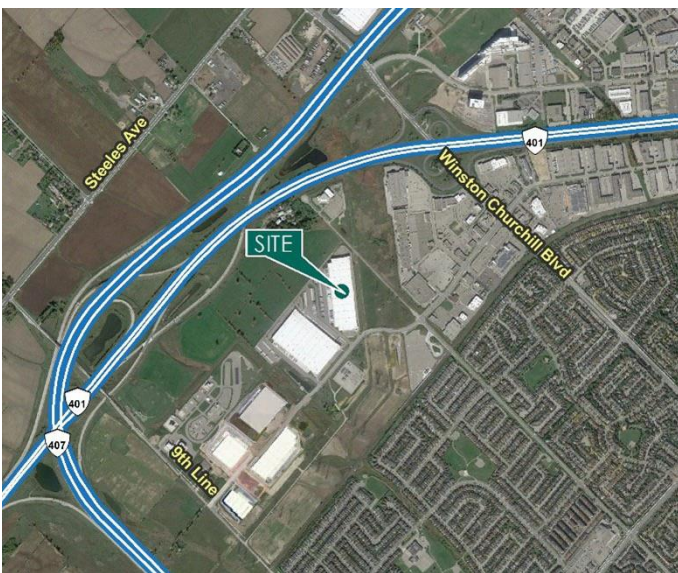
- Located at Argentia Rd. and 10<sup>th</sup> Ln. W
- 1 km to Winston Churchill Blvd. & Hwy 401 Interchange
- 3 km to Derry Rd. E & Hwy 407 Interchange

### FACILITY

- 207,051 SF available of 378,245 SF building
- 32' clear height
- 25 dock doors, 1 drive in door
- 30 trailer spaces
- 340' unit depth
- 60' staging bay, 54' x 40' bay sizes
- 5,802 SF of office area
- 800 amps
- ESFR sprinkler system
- LED lighting

### ADVANTAGES AND AMENITIES

- LEED Silver® certified
- Many retail amenities nearby
- Public transit and Lisgar GO Station nearby

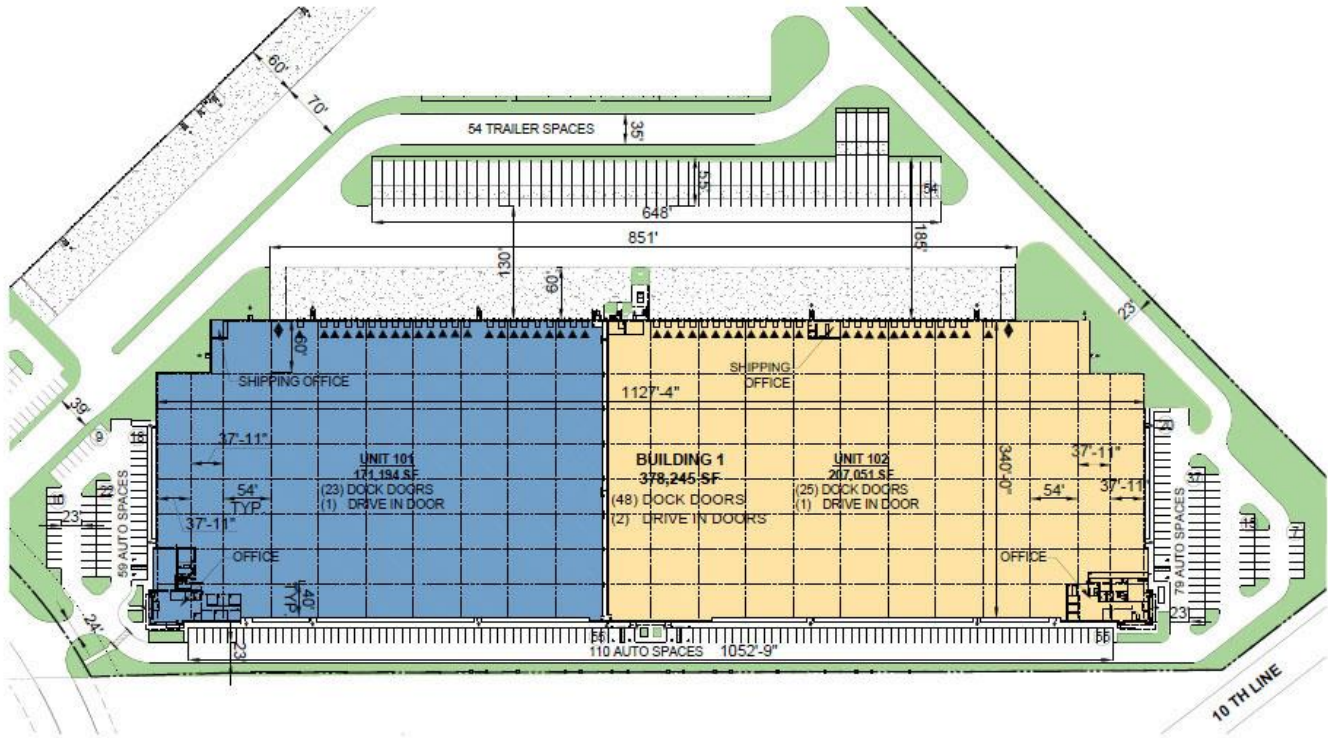


# 207,051 SF

Industrial Space For Lease



## Prologis Meadowvale Distribution Centre 1



**NOTE:**  
THIS CONCEPTUAL PLAN IS FOR MARKETING PURPOSES ONLY AND HAS BEEN PREPARED BASED ON PRELIMINARY AVAILABLE SITE INFORMATION DEEMED RELIABLE. ALL DIMENSIONS AND AREA CALCULATIONS ARE SUBJECT TO VERIFICATION BY A PROFESSIONAL ENGINEER FOR COMPLIANCE WITH ALL NATIONAL, STATE AND LOCAL REGULATIONS.

**LEGEND:**

- LEASED AREA
- AVAILABLE AREA
- ▲ DOCK DOOR
- ◆ DRIVE IN DOOR



**Cushman & Wakefield**

Peter Schmidt\*  
peter.schmidt@cushwake.com  
ph +1 416 756 5460  
1 Prologis Blvd  
Suite 300  
Mississauga, ON L5W 0G2 CANADA

**Cushman & Wakefield**

Dan Hubert\*  
daniel.hubert@cushwake.com  
ph +1 416 859 4879  
1 Prologis Blvd  
Suite 300  
Mississauga, ON L5W 0G2 CANADA

**Cushman & Wakefield**

James Mildon\*  
james.mildon@cushwake.com  
ph +1 416 756 5463  
1 Prologis Blvd  
Suite 300  
Mississauga, ON L5W 0G2 CANADA

**Prologis**

Bill Bolender\*\*  
wbolender@prologis.com  
ph +1 647 258 2611  
185 The West Mall  
Suite 700  
Toronto, ON M9C 5L6 CANADA

**Prologis**

Sharon Wong\*\*  
swong@prologis.com  
ph +1 416 388 5768  
185 The West Mall  
Suite 700  
Toronto, ON M9C 5L6 CANADA

\*Sales Representative

\*\*Broker

No warranty or representation, expressed or implied, is made as to the accuracy of the information contained herein, and same is submitted subject to error and omissions.