

44,167 SF

Industrial Space For Lease



Prologis Stemmons 21



9755 Clifford Drive, Suite 100
Dallas, TX 75220 USA

LOCATION

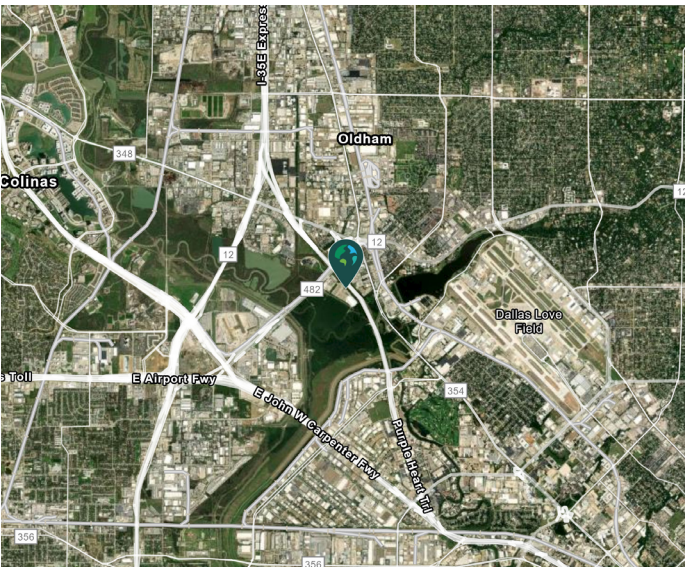
- Easy access to major thoroughfares including I-35, SH 183, SH 114, and TX-12
- ~4 miles to Dallas Love Field

FACILITY

- 44,167 sf available
- 5,003 sf office
- 23' clear height
- 40' x 44' typical bay spacing
- 7 (8' x 10') overhead dock doors, 6 with levelers
- 1 (8' x 10') overhead dock door with ramp
- Fully sprinklered

ADVANTAGES AND AMENITIES

- Access to the [Prologis Essentials](#) platform, which includes:
 - [Operations Essentials](#)
 - [Energy + Sustainability Essentials](#)
 - [Mobility Essentials](#)
 - [Workforce Essentials](#)



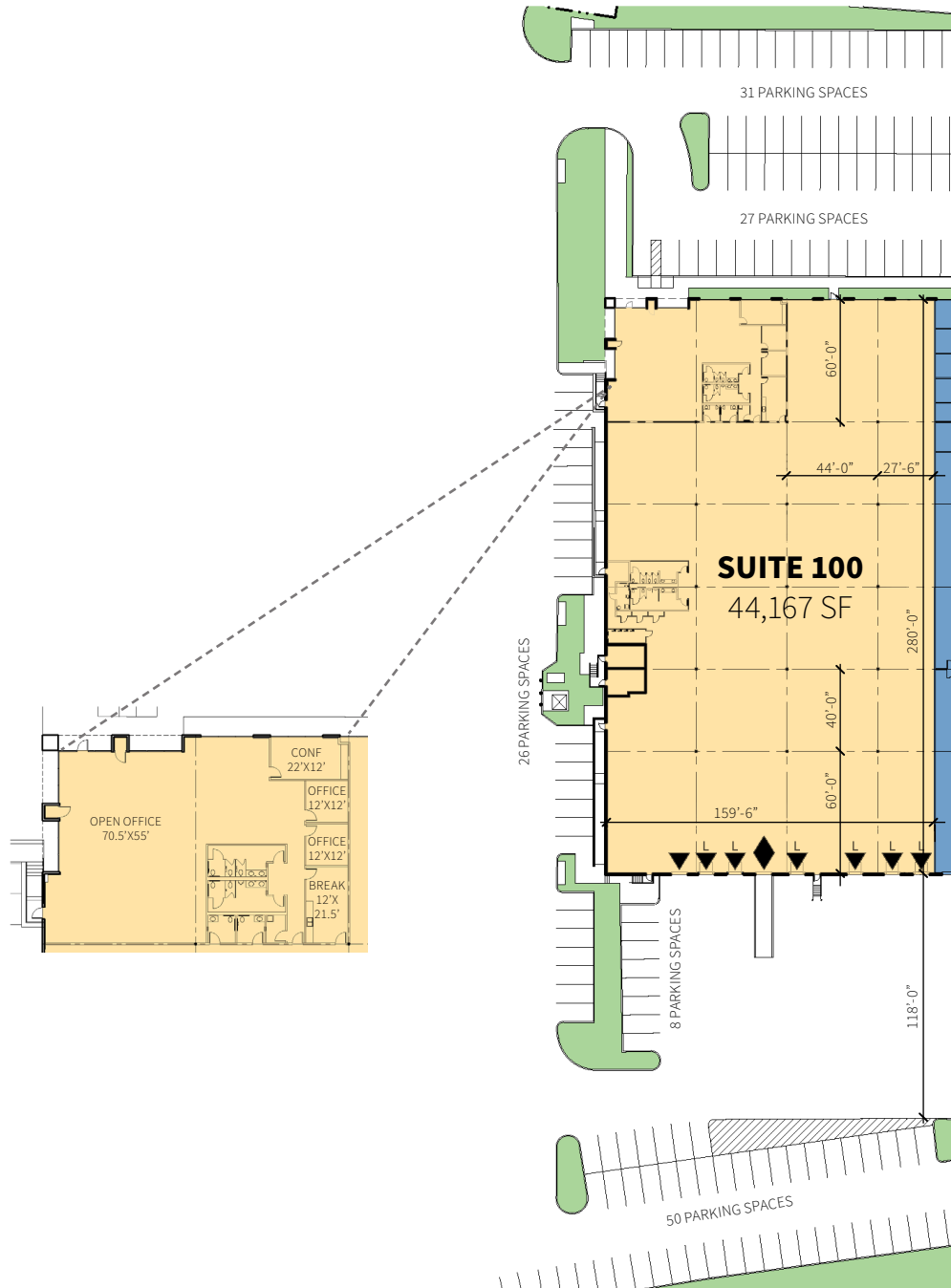
Prologis Essentials: your single-source service for efficient move-in and operations at prologisessentials.com

44,167 SF

Industrial Space For Lease



Prologis Stemmons 21



Lee & Associates

Adam Graham, SIOR, CCIM
agraham@lee-associates.com
ph +1 972 934 4011
cell +1 214 335 3320
14950 Quorum Drive
Suite 100
Dallas, TX 75254 USA

Lee & Associates

Stephen Williamson, SIOR
swilliamson@lee-associates.com
ph +1 972 934 4045
cell +1 817 705 5470
14950 Quorum Drive
Suite 100
Dallas, TX 75254 USA

Prologis

Sal Giunta
sg Giunta@prologis.com
ph +1 972 884 9247
cell +1 970 443 7574
2021 McKinney Avenue
Suite 1050
Dallas, TX 75201 USA