

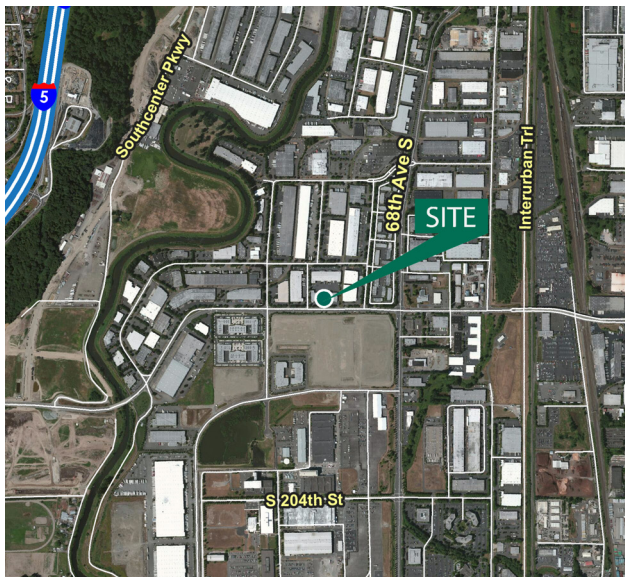
8,473 SF

Industrial Space For Lease



Prologis Park Kent 3

6414 S. 196th Street
Kent, WA 98032 USA



LOCATION

- Great access to I-5 and Highway 167
- North Kent Valley

FACILITY

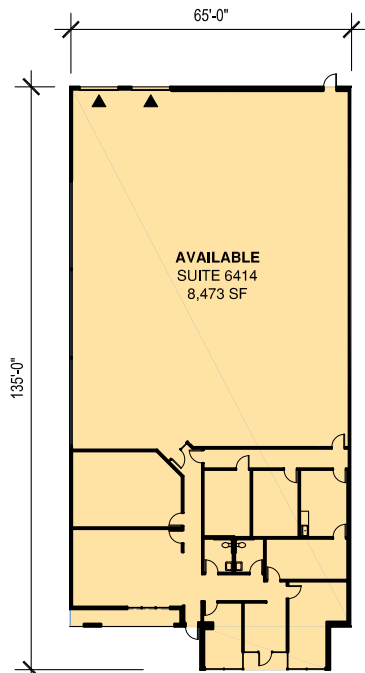
- Total building size: 52,482 SF
- Total available: 8,473 SF
- Total office space: 2,981 SF
- 2 dock high doors

ADVANTAGES AND AMENITIES

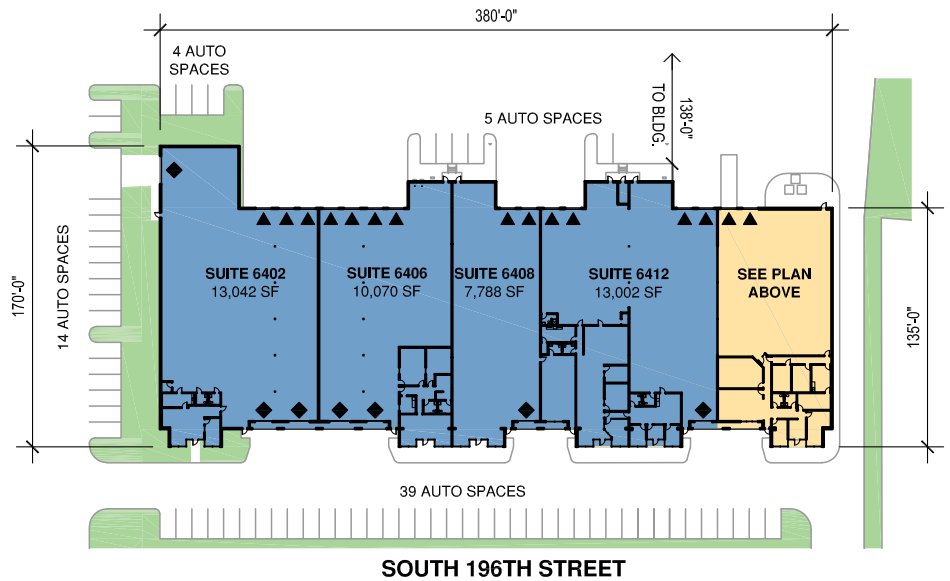
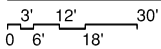
- Available October 1, 2018
- End cap space
- Multiple space configurations
- Visibility onto S. 196th Street

8,473 SF

Industrial Space For Lease



SUITES 6414



JLL
Les Boudwin, SIOR
les.boudwin@am.jll.com
ph +1 425 974 4023
cell +1 206 679 6393
225 108th Avenue NE
Suite 550
Bellevue, WA 98004 USA

JLL
Scott Carter
scott.carter@am.jll.com
ph +1 425 974 4004
cell +1 425 761 5880
225 108th Avenue NE
Suite 550
Bellevue, WA 98004 USA

JLL
David Cahill
david.cahill@am.jll.com
ph +1 425 974 4002
cell +1 206 930 5599
225 108th Avenue NE
Suite 550
Bellevue, WA 98004 USA

Prologis
Mark Roddy
mroddy@prologis.com
ph +1 206 414 7617
cell +1 206 947 1539
12720 Gateway Drive
Suite 110
Tukwila, WA 98168 USA