

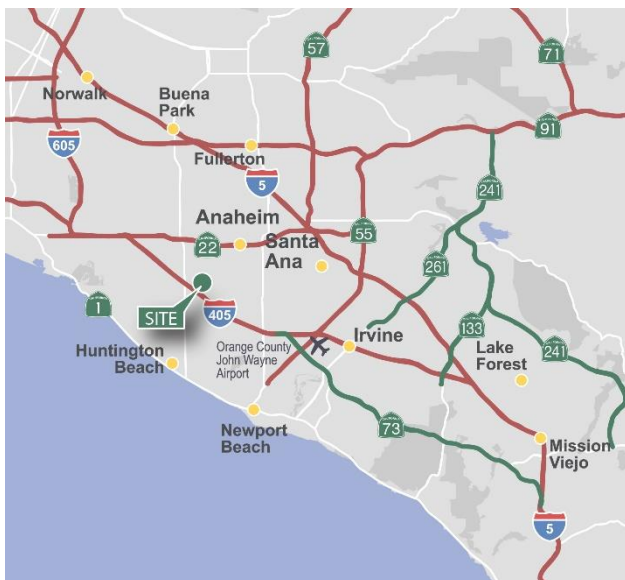
16,058 SF

Industrial Space For Lease



Prologis West Orange County Business Center

7171 Fenwick Lane
Westminster, CA 92683



LOCATION

- Immediate access to the 405 Freeway
- Strategic West Orange County location with skilled and diversified work force

FACILITY

- 16,058 square foot building
- 16,058 square feet available
- 4,984 s.f. of office space
- "Market ready" office improvements planned
- 18' warehouse clearance
- 400 Amp/480/277 volt Panel
- Fire sprinklers
- Fenced/secured
- Four (4) grade level doors
- ±2.1 parking spaces per 1,000 s.f.

ADVANTAGES AND AMENITIES

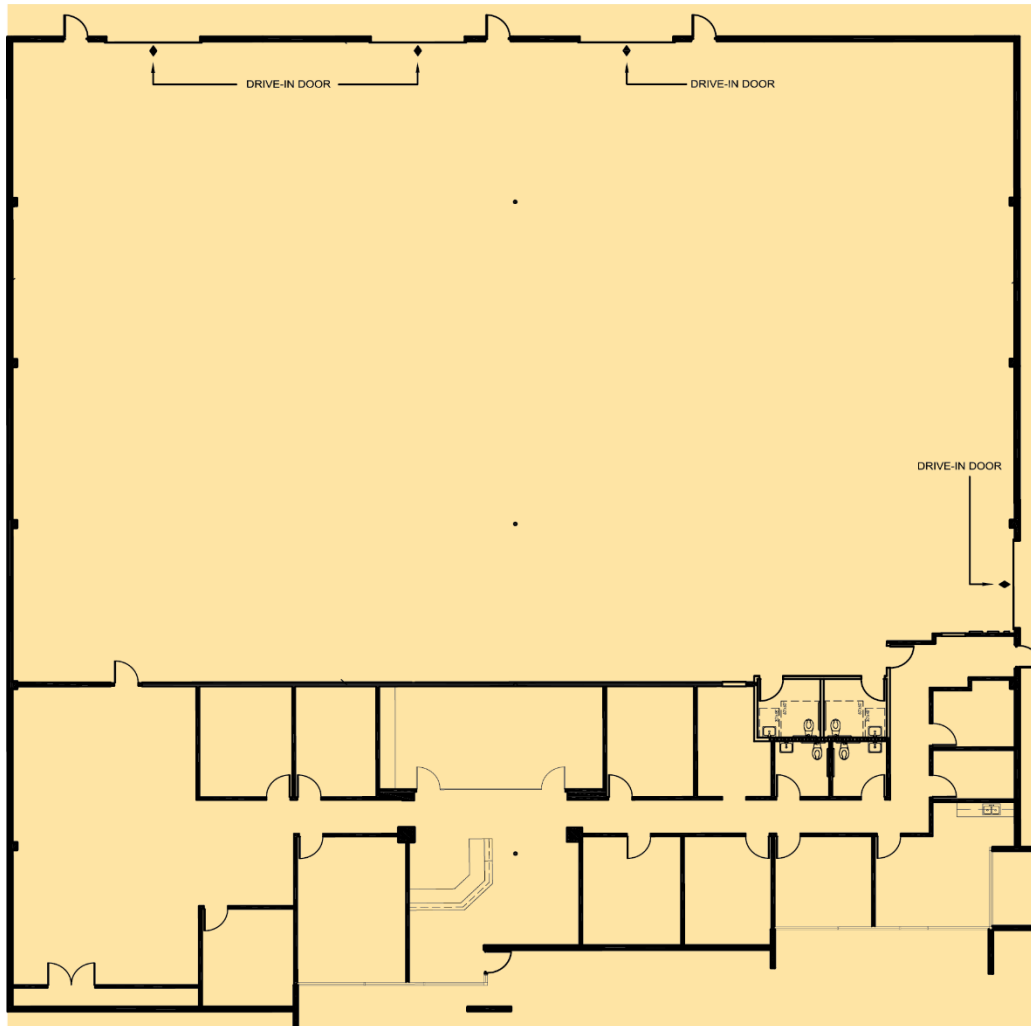
- Close to retail/dining amenities at the Westminster Mall and Bella Terra
- Part of a larger 264,847 s.f. professionally managed business

16,058 SF

Industrial Space For Lease



PLANNED FLOOR PLAN



Steve Wagner

License #01314652
steve.wagner@am.jll.com
+1 949 885 2923
4 Park Plaza, Suite 900
Irvine, CA 92614
www.jll.com

Louis Tomaselli

License #00904844
louis.tomaselli@am.jll.com
+1 949 885 2985
4 Park Plaza, Suite 900
Irvine, CA 92614
www.jll.com

Zach Niles

License #01311756
zach.niles@am.jll.com
+1 949 885 2922
4 Park Plaza, Suite 900
Irvine, CA 92614
www.jll.com

Parker Hutchison

License #01875578
phutchison@prologis.com
+1 562 345 9209
17777 Center Court Dr N, Suite 100
Cerritos, CA 90703
www.prologis.com