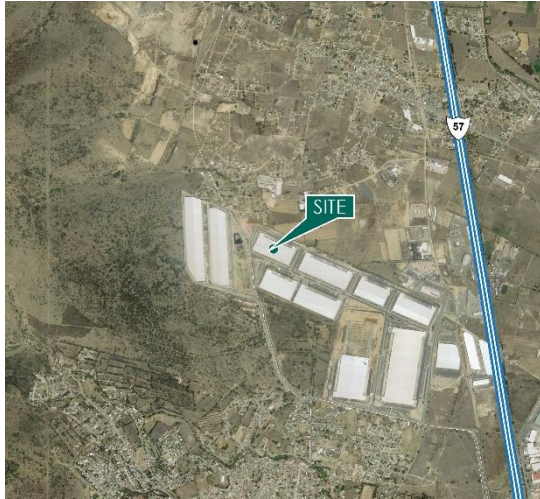


116,928 SF

Industrial Space For Lease



Prologis Park Grande

Libramiento Norte, esquina con Camino Antiguo a Querétaro, sin número, Fracción Oriente A Tepetzotlán, Estado de México.

LOCATION

- Located within the CTT (Cuautitlan-Tultitlan-Tepetzotlan-Industrial Corridor).
- Close proximity to México-Queretaro Highway, Circuito Exterior Mexiquense and Arco Norte bypass.

FACILITY

- Warehouse: 116,928 SF / 10,863 SM
- Minimum Clear Height: 32' (9.47 m)
- Maximum Clear Height: 36.41' (11.1 m)
- Bay Area 50' x 54' (15.24m x 16.46m)
- Walls: concrete tilt-up walls
- Roof: Metal KR-18 with 4% skylights
- Dock doors: 10 / Trailer Parking Spaces: 14
- Office Area: 3% TBD

ADVANTAGES AND AMENITIES

- Property Management Team in site
- Prime Location for Logistics and Distribution Operations

116,928 SF

Industrial Space For Lease



Prologis

Rafael Arias

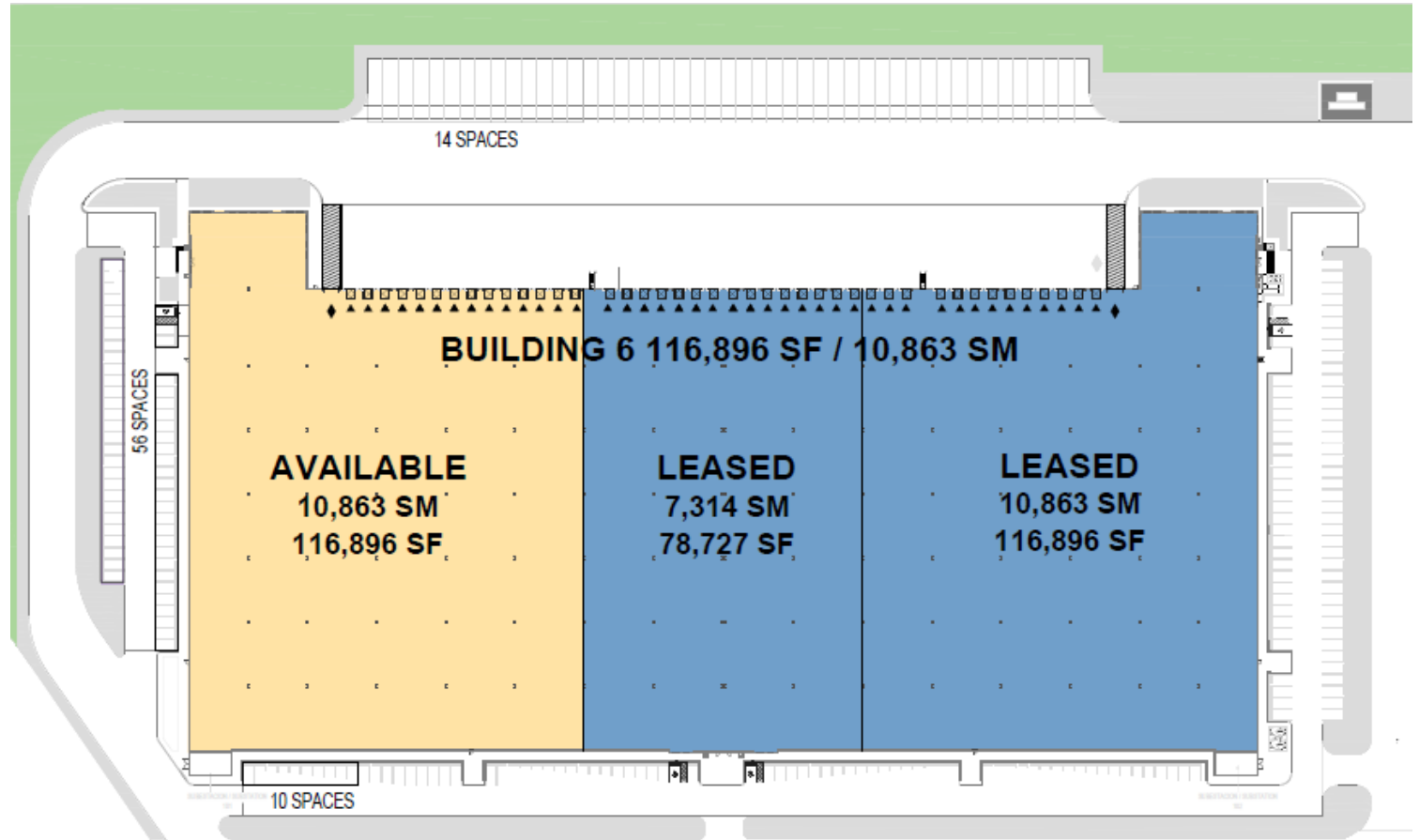
rarias@prologis.com
ph +52 (55) 1105.2900

Sandra Solís

sesolis@prologis.com
ph +52 (55) 2300.8430

Rodolfo Guevara

rguevara@prologis.com
ph + 52 (55) 1105.2957



LEGEND:

- LAND
- LEASED AREA
- AVAILABLE
- ▲ DOCK POSITION
- ▲ DOCK POSITION W/LEVELER
- FUTURE DOCK POSITION
- ◆ DRIVE IN DOOR