

# 6,000 SF

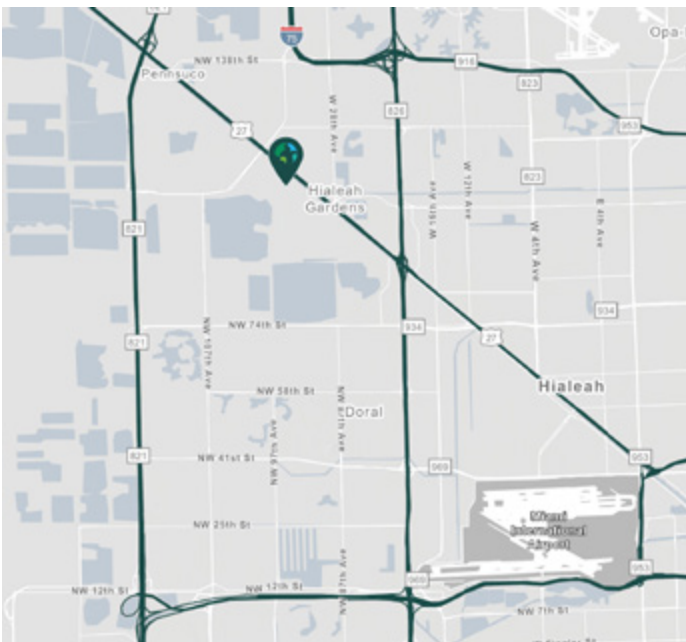
Industrial Space For Lease



## Prologis Medley Palms



9401 NW 106th Street  
Medley, FL 33178 USA



### LOCATION

- Airport North/Medley
- Immediate access to 826 (Palmetto expressway), U.S. 27, Florida's Turnpike, and I-95

### FACILITY

- 6,000 SF total available
- 1,980 SF office
- 18' clear height
- 1 Drive-in doors
- 0.34/1,000 parking ratio
- M-1 zoning
- Available immediately

### ADVANTAGES AND AMENITIES

- Prologis Clear Lease® – Know your lease expenses and capital cost with greater certainty before your sign

**Your single-source service for efficient move-in and operations: [prologisessentials.com](http://prologisessentials.com)**



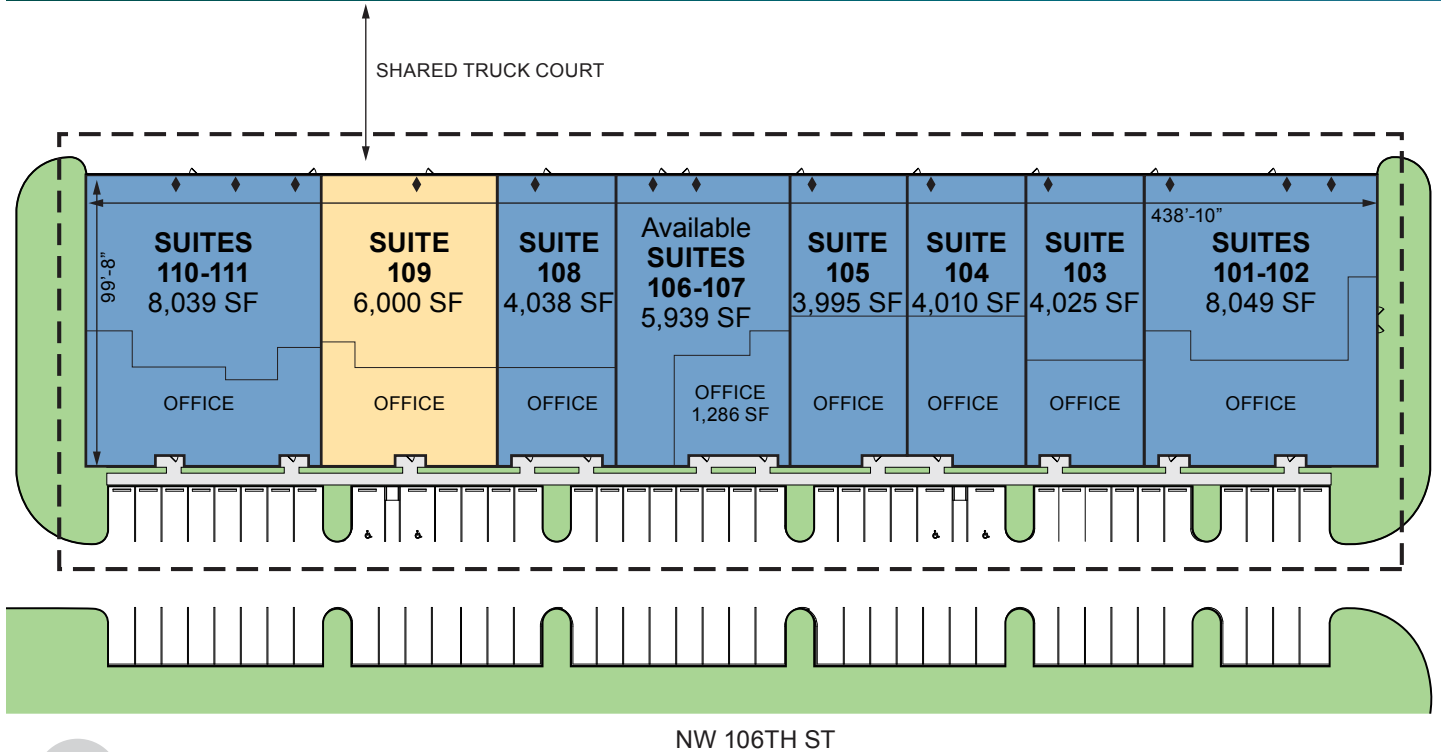
Scan the QR code for more info!

# 6,000 SF

Industrial Space For Lease



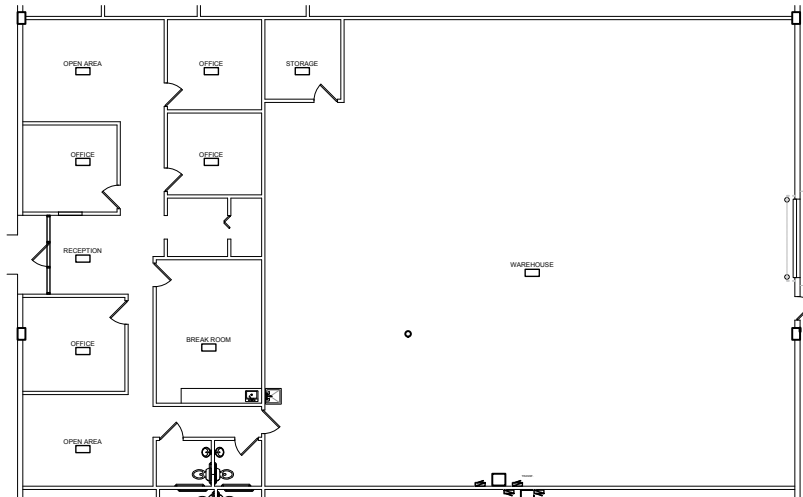
## Prologis Medley Palms



**SUITE 109**  
OFFICE ±1,980 SF

**LEGEND**

- ▼ Dock position
- ◆ Drive-in door
- Available
- Leased
- Land



**Ana Rivera**  
ana.rivera@jll.com  
ph +1 305 960 8427  
cell +1 305 778 7652  
200 S. Biscayne Blvd.  
Suite 4300  
Miami, FL 33131 USA

**Juan Mazuera**  
juan.mazuera@jll.com  
ph +1 305 960 8445  
cell +1 786 553 5131  
200 S. Biscayne Blvd.  
Suite 4300  
Miami, FL 33131 USA

**Prologis**  
**Dylan Esquenazi**  
desquenazi@prologis.com  
ph +1 305 599 6205  
8355 NW 12th Street  
Miami, FL 33126 USA