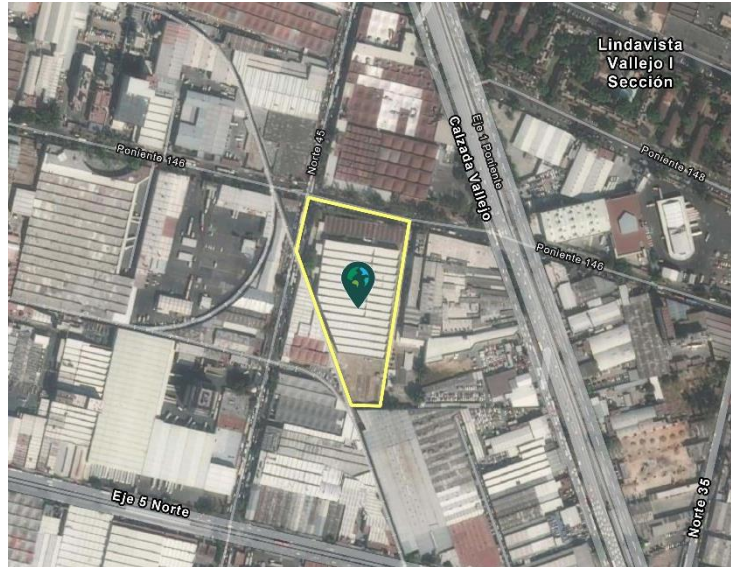


# 119,363 SQF

## Industrial Space For Lease as of March, 2023



### Prologis Vallejo DC 3

Poniente 146 #625, Industrial Vallejo  
Azcapotzalco, Cd. México.

#### LOCATION

- Located within Mexico City's Vallejo sub-market
- 12-14 km to Condesa, Roma, Polanco, Reforma
- Excellent access roads
- Strong labor pool

#### FACILITY

- Available Area: 11,000 SQM / 119,363 SQF
- Warehouse Area: 10,077 SQM / 108,470 SQF
- Office Area: 1,012 SQM / 10,893 SQF
- Rentable Patio: 9,966 SQM / 107,270 SQF
- Clear Height: 5 m / 17 ft.
- 6 Dock Doors

#### ADVANTAGES

- Close proximity to main roads and public transportation
- Prime location for near top zip codes in the city
- No restriction on heavy transportation flow

# 119,363 SQF

## Industrial Space For Lease as of March, 2023



Prologis

Sandra Solís

[sesolis@prologis.com](mailto:sesolis@prologis.com)

ph +52 (55) 1105 2932

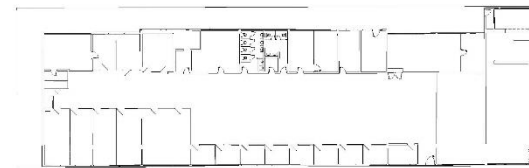
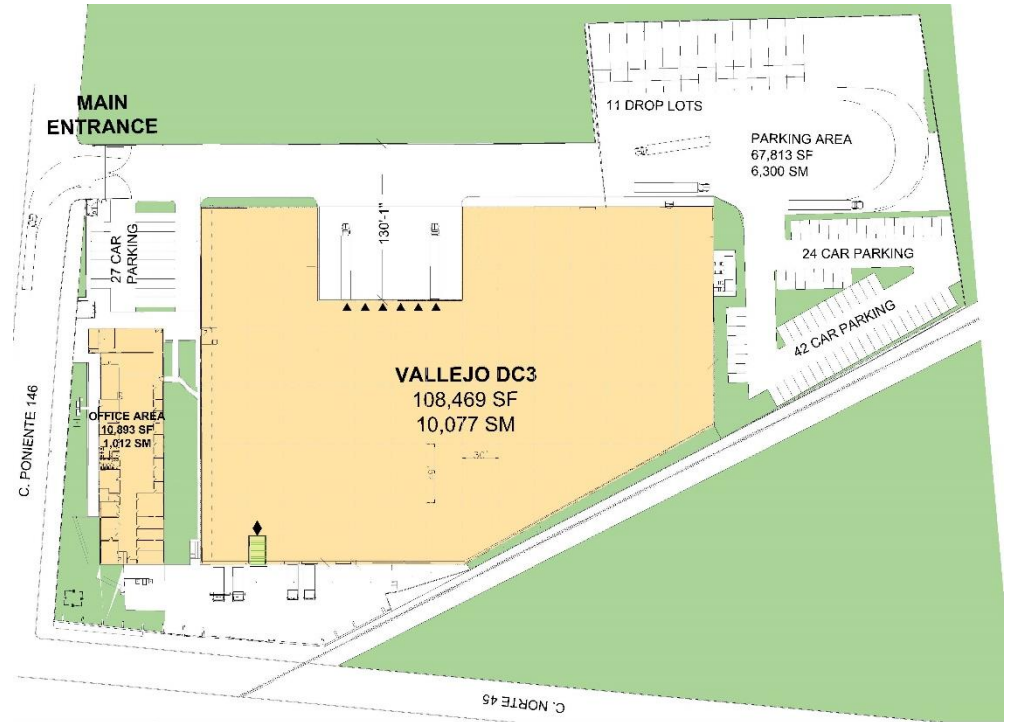
cell +52 (55) 2300 8430

Paseo de los Tamarindos 90

Torre 2 Piso 22

Bosques de las Lomas

CDMX, 05120 México



**OFFICE AREA**  
10,893 SF  
1,012 SM

LEGEND:

- = AVAILABLE AREA
- = PLANNED
- = LAND
- ▶ = DOCK POSITION
- ▶ = DOCK POSITION W/ LEVELER
- ▷ = FUTURE DOCK POSITION
- ◆ = DRIVE-IN DOOR