

2,223 SF

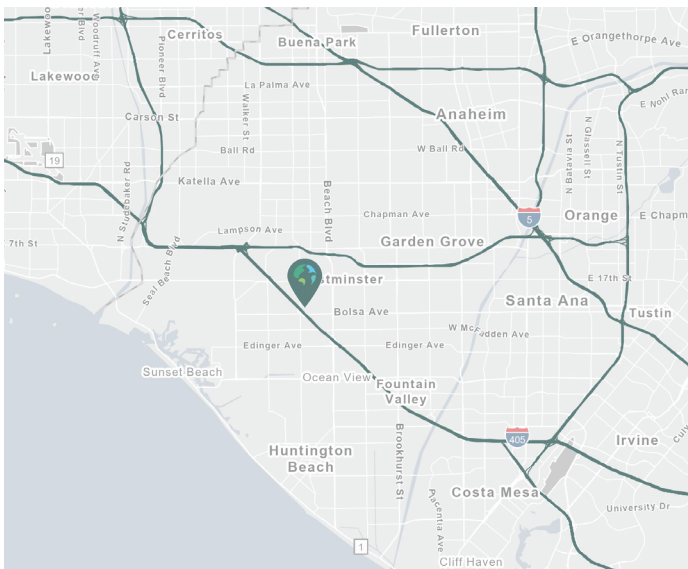
Industrial Space For Lease



Prologis West Orange County Business Center



7125 Fenwick Lane, Suite A
Westminster, CA 92683



LOCATION

- Immediate access to the 405 Freeway
- Strategic West Orange County location with skilled and diversified work force
- Close to retail/dining amenities at the Westminster Mall and Bella Terra
- Part of a larger 264,847 sf business facility

FACILITY

- 2,223 square feet available
- 875 square feet of single-story office space
- 1,348 square feet of warehouse space
- 1 ground-level loading door
- 12' warehouse clearance
- 200 Amps, 120/208 volts (to be verified)
- .33 gpm/3,000 sf Calculated Sprinkler System
- ±1.72 parking spaces per 1,000 s.f.

ADVANTAGES AND AMENITIES

- Access to the Prologis Essentials platform, which includes:
 - [Operations Essentials](#)
 - [Energy Essentials](#)
 - [Workforce Essentials](#)
 - [Mobility Essentials](#)
 - [Digital Essentials](#)

Your single-source service for efficient move-in and operations: [prologisessentials.com](https://www.prologisessentials.com)

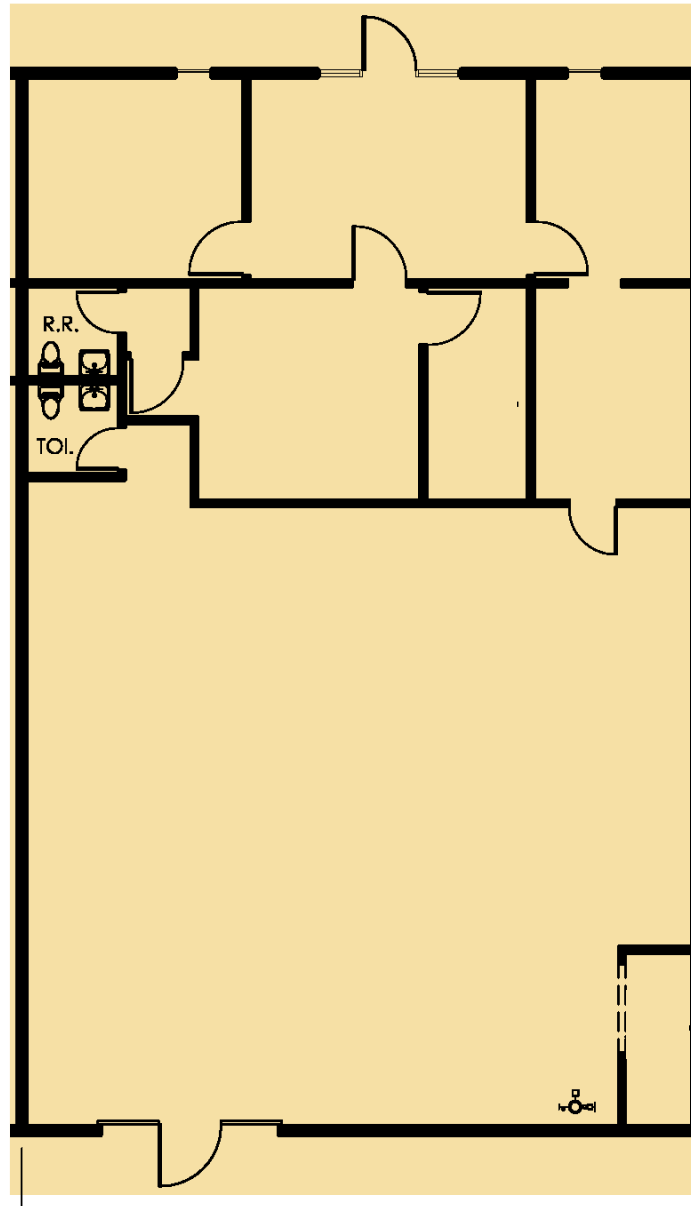
www.prologis.com
CalDRE License #01944561

2,223 SF

Industrial Space For Lease



Prologis West Orange County Business Center



Steve Wagner

License #01314652
steve.wagner@jll.com
+1 949 885 2923
17877 Von Karman Ave.,
Suite 500
Irvine, CA 92614
www.jll.com

Louis Tomaselli

License #00904844
louis.tomaselli@jll.com
+1 949 885 2985
17877 Von Karman Ave.,
Suite 500
Irvine, CA 92614
www.jll.com

Zach Niles

License #01311756
zach.niles@jll.com
+1 949 885 2922
17877 Von Karman Ave.,
Suite 500
Irvine, CA 92614
www.jll.com

Parker Hutchison

License #01875578
phutchison@prologis.com
+1 562 345 9209
17777 Center Court Dr N,
Suite 100
Cerritos, CA 90703
www.prologis.com