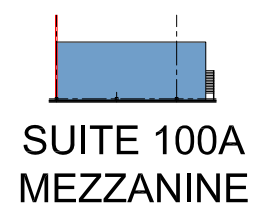
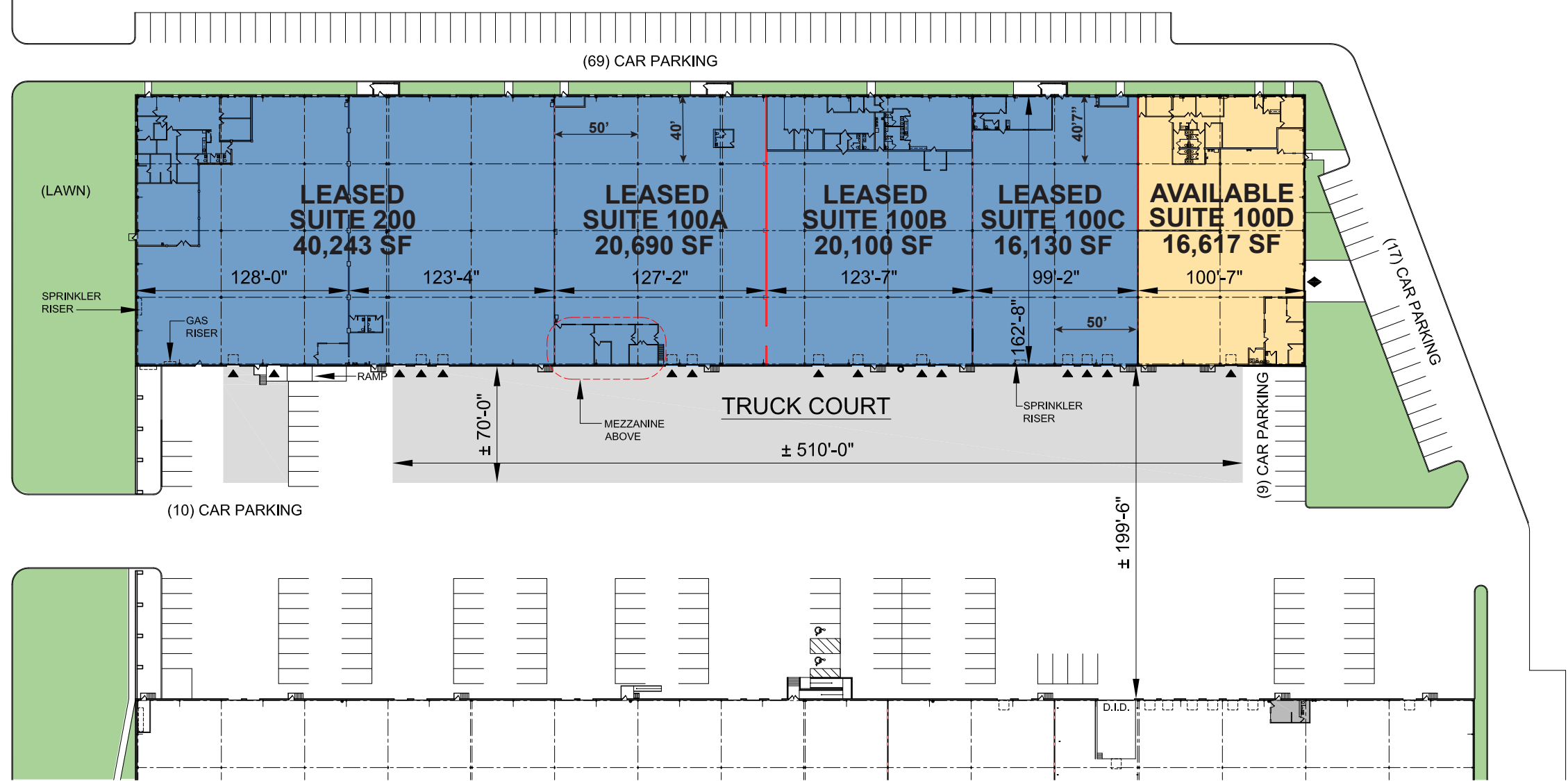


VALLEY BROOK AVENUE



PROLOGIS
MEADOWLANDS

1270 VALLEY BROOK AVENUE
LYNDHURST, NEW JERSEY 07071

TOTAL FOOTPRINT:	113,780 S.F.
OFFICE:	15,771 S.F.
WAREHOUSE:	98,009 S.F.
PERCENTAGE OFFICE:	13.9%
CLEAR HEIGHT:	22'-0"
PARKING:	105 STALLS
DOCK-HIGH DOORS:	16
DRIVE-IN DOORS:	1
TYPICAL BAY:	40'-0" x 50'-0"

LEGEND



- LAND
- AVAILABLE
- LEASED
- DOCK DOOR
- DRIVE-IN DOOR

SUITE 200:	40,243 S.F.	SUITE 100A:	20,690 S.F.	SUITE 100B:	20,100 S.F.	SUITE 100C:	16,130 S.F.	SUITE 100D:	16,617 S.F.
OFFICE:	4,595 S.F.	OFFICE:	1,553 S.F.	OFFICE:	4,293 S.F.	OFFICE:	1,016 S.F.	OFFICE:	4,314 S.F.
WAREHOUSE:	35,648 S.F.	WAREHOUSE:	19,137 S.F.	WAREHOUSE:	15,807 S.F.	WAREHOUSE:	15,114 S.F.	WAREHOUSE:	12,303 S.F.
PERCENTAGE OFFICE:	11%	PERCENTAGE OFFICE:	8%	PERCENTAGE OFFICE:	21%	PERCENTAGE OFFICE:	6.3%	PERCENTAGE OFFICE:	26%
CLEAR HEIGHT:	22'-0"	CLEAR HEIGHT:	22'-0"	CLEAR HEIGHT:	22'-0"	CLEAR HEIGHT:	22'-0"	CLEAR HEIGHT:	22'-0"
DOCK-HIGH DOORS:	5	DOCK-HIGH DOORS:	2	DOCK-HIGH DOORS:	4	DOCK-HIGH DOORS:	3	DOCK-HIGH DOORS:	1
DRIVE-IN DOORS:	0	DRIVE-IN DOORS:	0	DRIVE-IN DOORS:	0	DRIVE-IN DOORS:	0	DRIVE-IN DOORS:	1
TYPICAL BAY:	40'-0" x 50'-0"	TYPICAL BAY:	40'-0" x 50'-0"	TYPICAL BAY:	40'-0" x 50'-0"	TYPICAL BAY:	40'-0" x 50'-0"	TYPICAL BAY:	40'-0" x 50'-0"

