

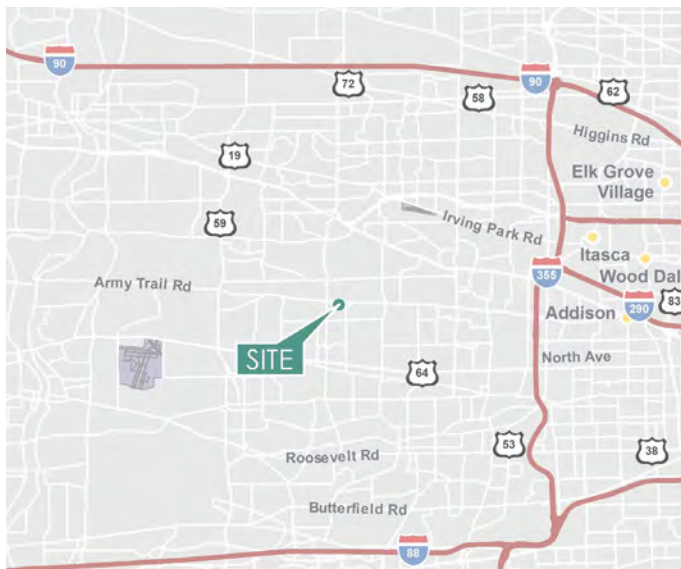
# 78,381 SF (Divisible)

Industrial Space For Lease



## Prologis Bloomingdale

300 Madsen Drive  
Bloomingdale, IL 60108 USA



### LOCATION

- Professional Business Park setting located within Prologis' Bloomingdale Business Center
- Close proximity to I-355 and I-390 (Elgin/O'Hare)

### FACILITY

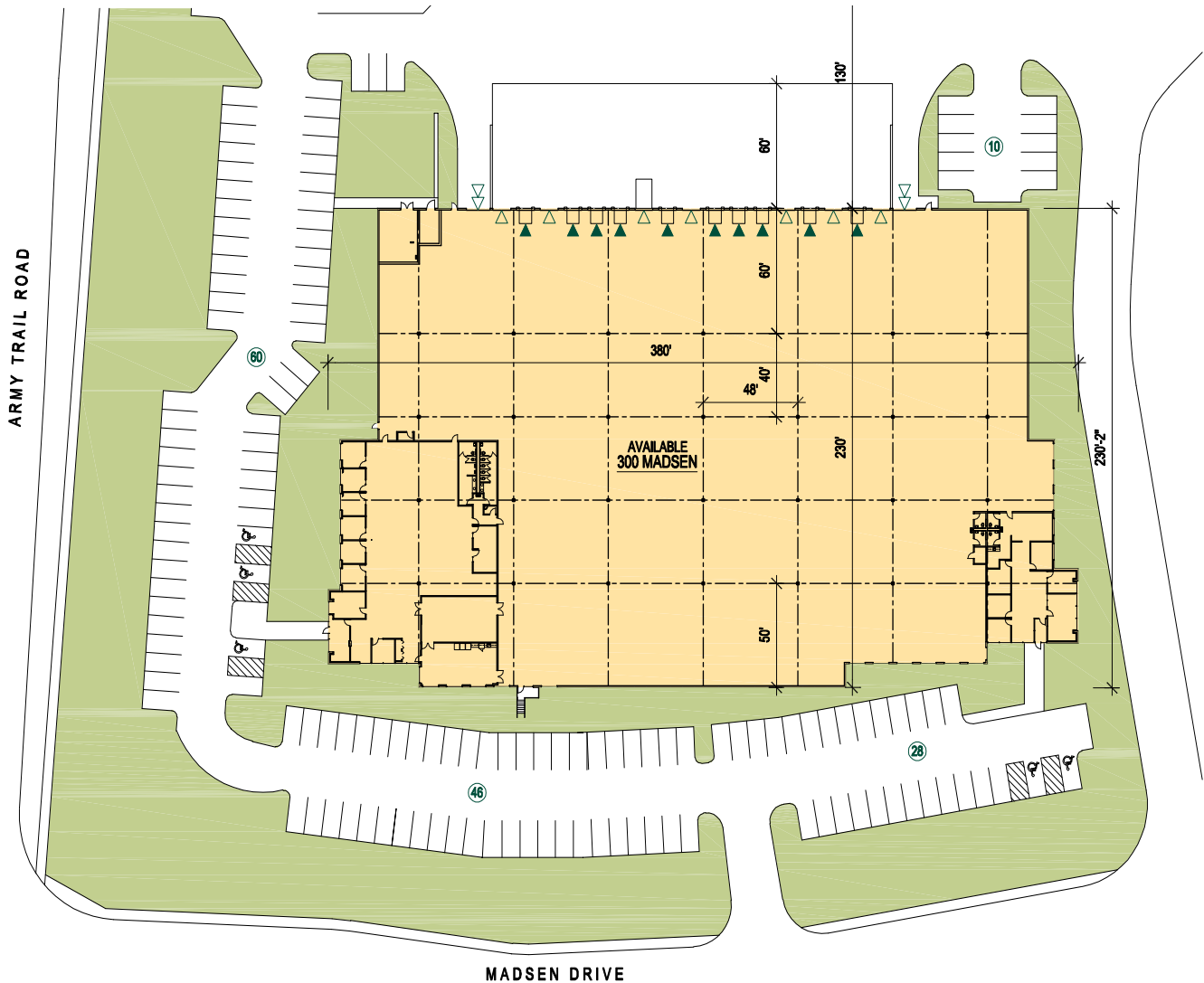
- 78,381 sf facility available (divisible)
- 9,311 sf office 1 (south) | 2,799 sf office 2 (north)
- 26' clear height
- 40' x 48' bay size
- 17 exterior docks
- 2 drive-in doors
- 144 auto parking
- 1200 amps @ 277/480 volt

### ADVANTAGES AND AMENITIES

- DuPage County taxes
- High Image Facility
- Army Trail Road exposure

# 78,381 SF (Divisible)

Industrial Space For Lease



#### Cushman & Wakefield

**Britt Casey**

britt.casey@cushwake.com

ph +1 847 518 3280

cell +1 847 456 7545

9500 W. Bryn Mawr Avenue  
Suite 600

Rosemont, IL 60018 USA

#### Cushman & Wakefield

**Al Caruana**

al.caruana@cushwake.com

ph +1 847 720 1326

cell +1 847 456 8417

9500 W. Bryn Mawr Avenue  
Suite 600

Rosemont, IL 60018 USA

#### Cushman & Wakefield

**Jeff Matella**

jeff.matella@cushwake.com

ph +1 847 720 1349

cell +1 847 997 2878

9500 W. Bryn Mawr Avenue  
Suite 600

Rosemont, IL 60018 USA

#### Prologis

**Matthew Mannina**

mmannina@prologis.com

ph +1 847 292 3939

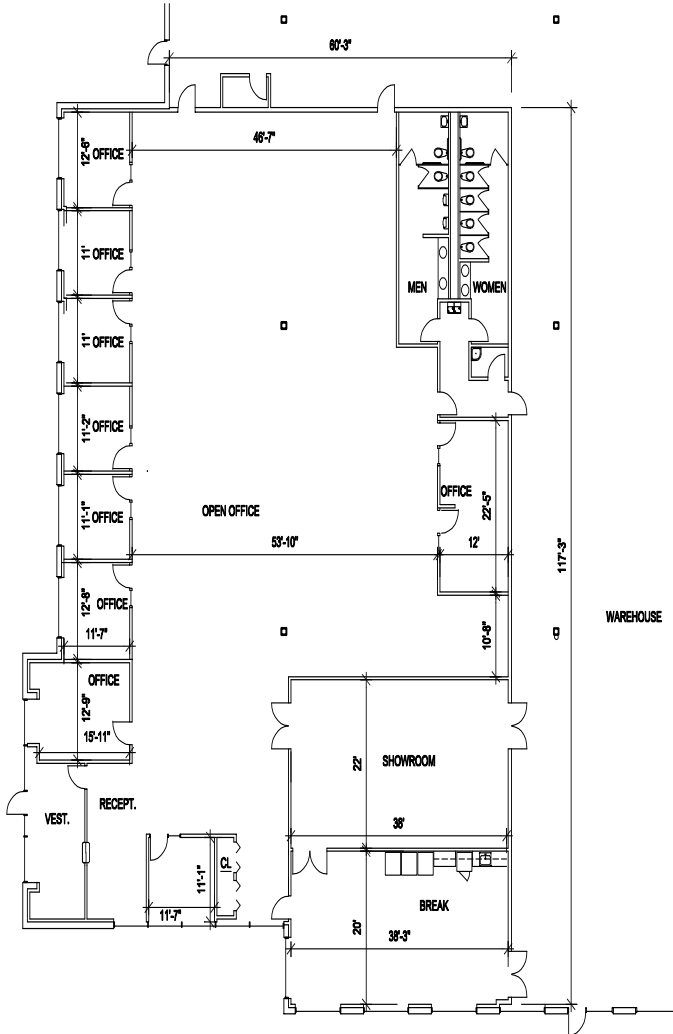
cell +1 847 791 3827

6250 N. River Road  
Suite 1100

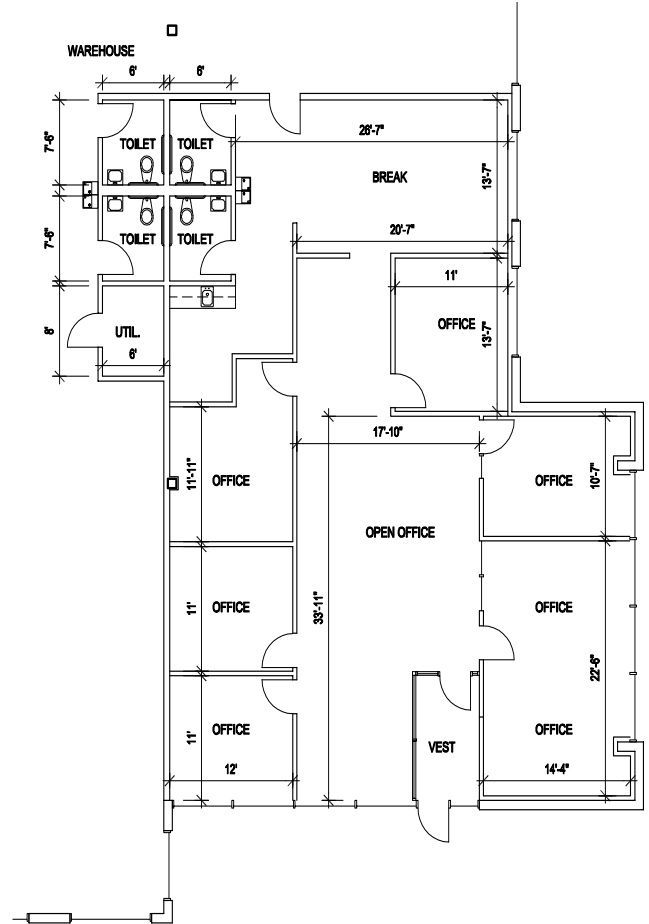
Rosemont, IL 60018 USA

# 78,381 SF (Divisible)

Industrial Space For Lease



South Office Plan - 9,311 SF



North Office Plan - 2,799 SF



## Cushman & Wakefield

**Britt Casey**

britt.casey@cushwake.com  
ph +1 847 518 3280  
cell +1 847 456 7545  
9500 W. Bryn Mawr Avenue  
Suite 600  
Rosemont, IL 60018 USA

## Cushman & Wakefield

**Al Caruana**

al.caruana@cushwake.com  
ph +1 847 720 1326  
cell +1 847 456 8417  
9500 W. Bryn Mawr Avenue  
Suite 600  
Rosemont, IL 60018 USA

## Cushman & Wakefield

**Jeff Matella**

jeff.matella@cushwake.com  
ph +1 847 720 1349  
cell +1 847 997 2878  
9500 W. Bryn Mawr Avenue  
Suite 600  
Rosemont, IL 60018 USA

## Prologis

**Matthew Mannina**

mmannina@prologis.com  
ph +1 847 292 3939  
cell +1 847 791 3827  
6250 N. River Road  
Suite 1100  
Rosemont, IL 60018 USA