

# 51,979 SF

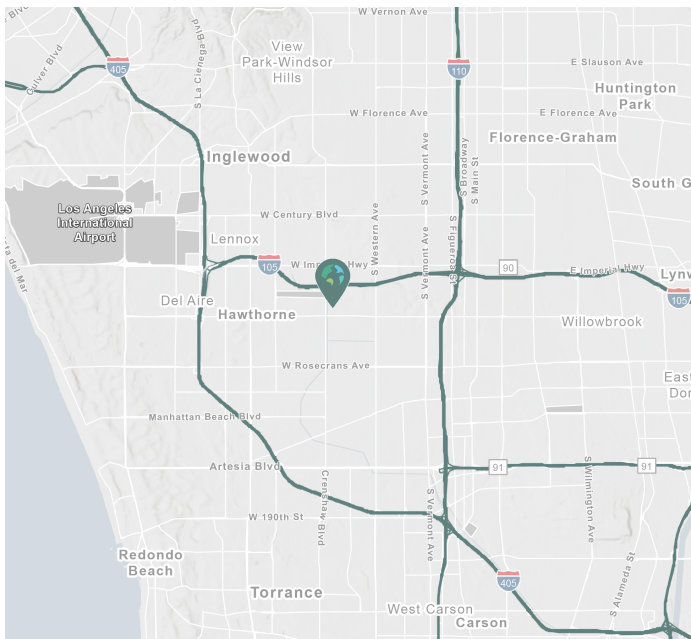
Industrial Space For Lease



## Prologis LAX Logistics Center 7



2805 W. El Segundo Boulevard  
Hawthorne, CA 90250 USA



### LOCATION

- 3 miles to LAX /proximity to 105/405/110 freeways
- 12 miles to the Ports of Los Angeles and Long Beach

### FACILITY

- Part of a 160,987 SF Building
- 51,9779 SF Unit
- 15,304 SF of Corporate Office Space
- 30' Minimum Clear Height
- 18 Dock High Loading Positions
- 1 Drive-In Door
- 400 Amps, 277/480 Volts
- .495 GPM/2,000 SF Calculated Sprinkler System
- 185' truck court
- 100 parking spaces

### ADVANTAGES AND AMENITIES

- Access to the Prologis Essentials platform, which includes:
  - [Operations Essentials](#)
  - [Energy Essentials](#)
  - [Workforce Essentials](#)
  - [Mobility Essentials](#)
  - [Digital Essentials](#)

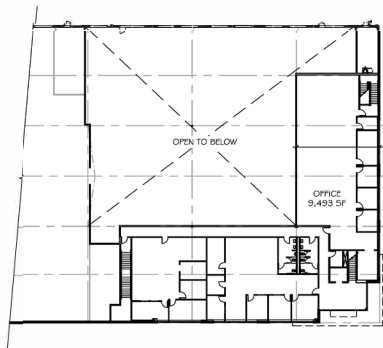
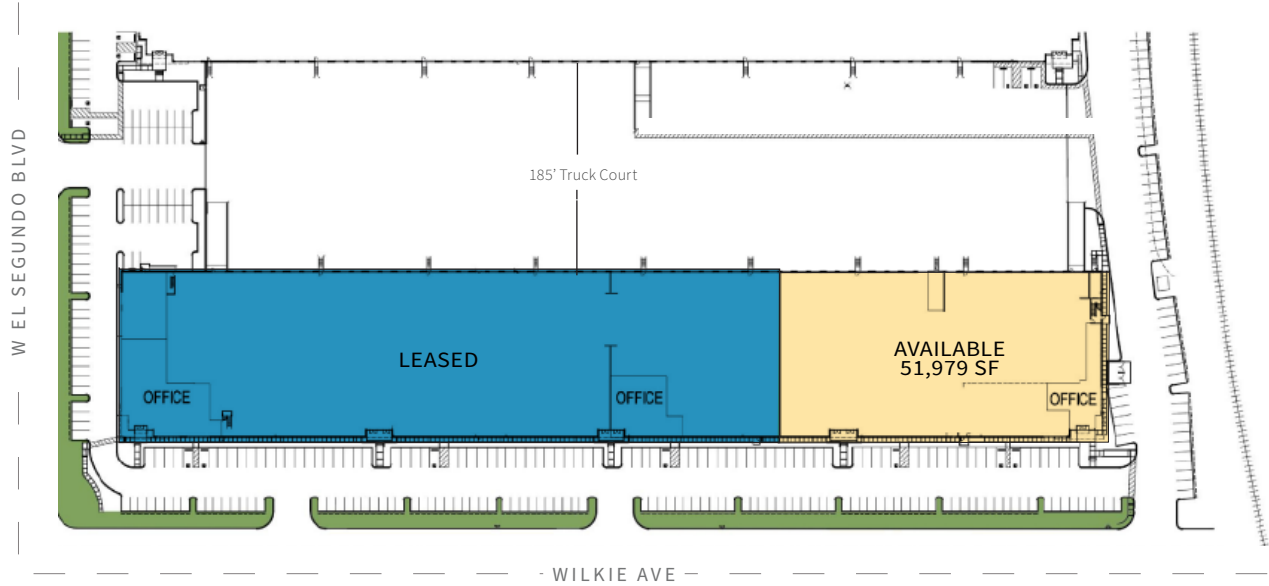
Your single-source service for efficient move-in and operations: [prologisessentials.com](https://www.prologisessentials.com)

# 51,979 SF

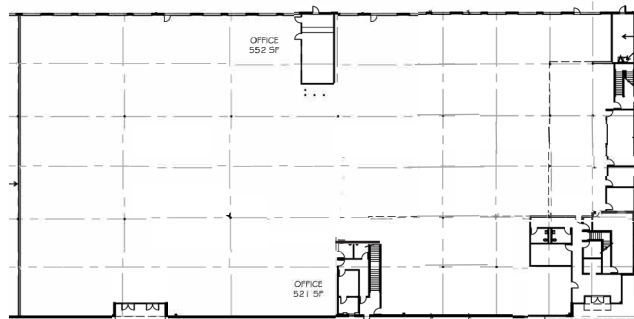
Industrial Space For Lease



## Prologis LAX Logistics Center 7



MEZZANINE



GROUND FLOOR



### Kidder Mathews

Luke Staubitz, SIOR  
luke.staubitz@kidder.com  
ph +1 310 906 3288  
cell +1 310 408 0456  
2101 Rosecrans Avenue  
Suite 1250  
El Segundo, CA 90245 USA  
CalDRE License # 01037737

### Kidder Mathews

Andrew Dilfer, SIOR, GLS  
andrew.dilfer@kidder.com  
ph +1 310 906 3280  
cell +1 310 963 6102  
2101 Rosecrans Avenue  
Suite 1250  
El Segundo, CA 90245 USA  
CalDRE License # 01455665

### Kidder Mathews

Harvey Beesen, SIOR  
harvey.beesen@kidder.com  
ph +1 310 906 3264  
cell +1 310 989 7368  
2101 Rosecrans Avenue  
Suite 1250  
El Segundo, CA 90245 USA  
CalDRE License # 00615891

### Prologis

Lisa H. Reddy  
lreddy@prologis.com  
ph +1 310 338 3264  
2141 Rosecrans Avenue  
Suite 1151  
El Segundo, CA 90245 USA  
CalDRE License # 01327922