

20,725 SF

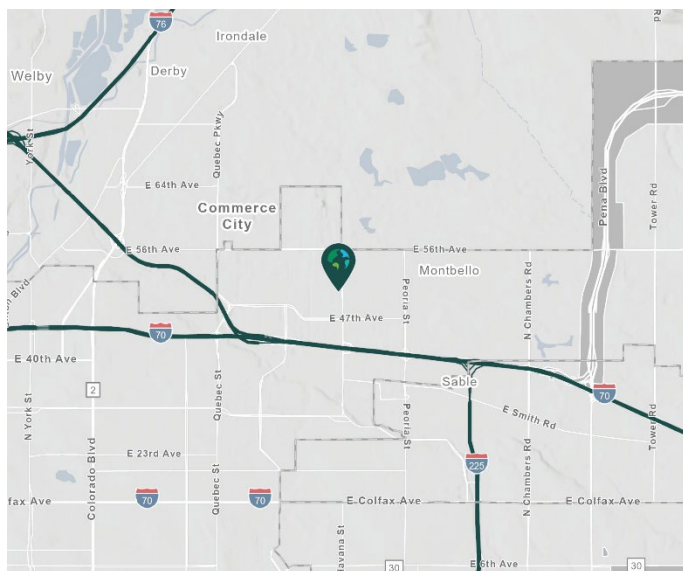
Industrial Space For Lease



Prologis Business Center, Building 12



10415 E. 49th Avenue
Denver, CO 80238 USA



LOCATION

- Easy access to I-70 & I-225
- 10 miles to Denver International Airport
- 14 miles to Downtown Denver
- Prologis owned & operated

FACILITY

- 20,725 total SF
- 5,122 SF office
- 30' clear height
- 3 dock high doors
- 1 drive in door
- ESFR sprinkler system

ADVANTAGES AND AMENITIES

- Access to the Prologis Essentials platform, which includes:
 - [Operations Essentials](#)
 - [Energy Essentials](#)
 - [Workforce Essentials](#)
 - [Mobility Essentials](#)
 - [Digital Essentials](#)

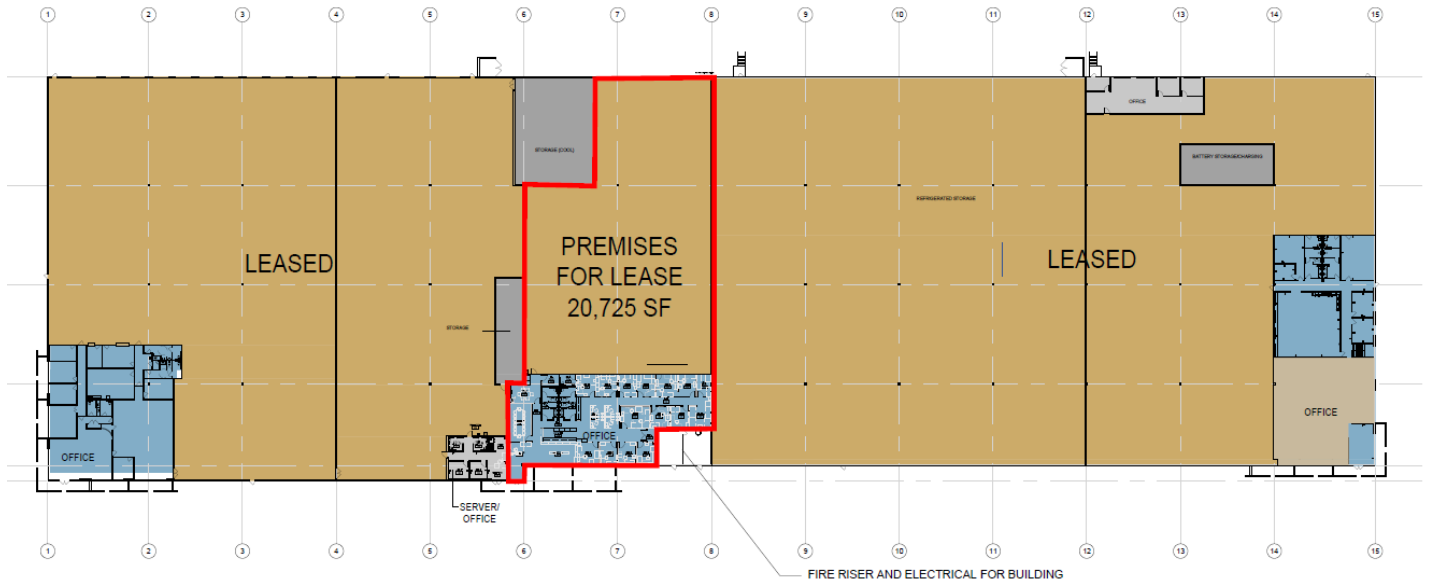
Your single-source service for efficient move-in and operations: [prologisessentials.com](https://www.prologisessentials.com)

20,725 SF

Industrial Space For Lease

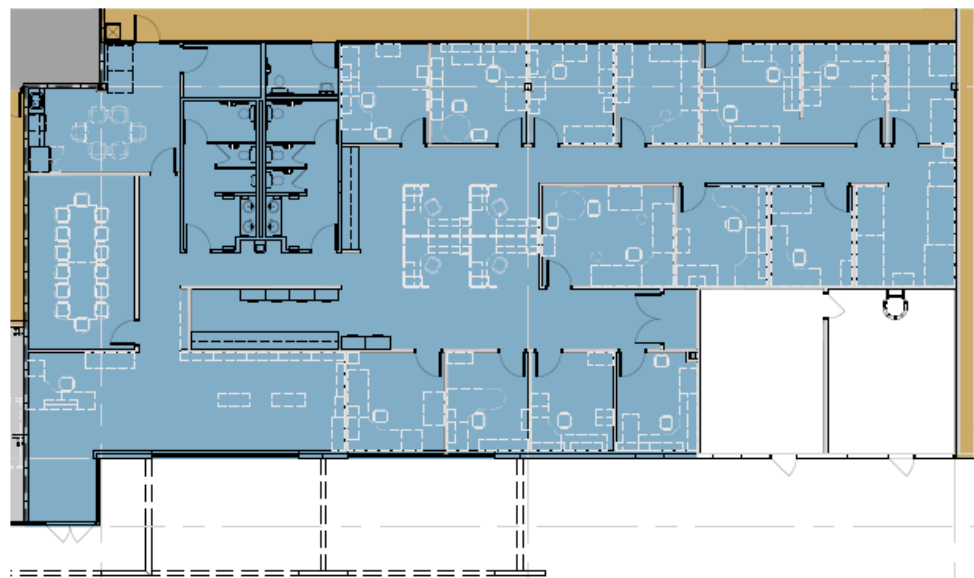


Prologis Business Center, Building 12



LEGEND:

- MAIN OFFICE AREA
- WAREHOUSE/STORAGE
- ADDITIONAL OFFICE AREA
- ADDITIONAL STORAGE



north

Prologis
Keiffer Garton
kgarton@prologis.com
ph +1 303 567 5193
cell +1 303 579 7106
1800 Wazee Street
Suite 500
Denver, CO 80202 USA

5,122.69 S.F.

ENLARGED OFFICE PLAN

SCALE 1/16" = 1'-0"

2