



# Warm Springs Distribution Center #13

7750 Dean Martin Drive, Suite 406 | Las Vegas, NV 89139

±13,045 Square Feet Available  
Industrial Building For Lease

[www.prologis.com](http://www.prologis.com) [www.cushmanwakefield.com](http://www.cushmanwakefield.com)



# Warm Springs Distribution Center #13

7750 Dean Martin Drive, Suite 406 | Las Vegas, NV 89139



±13,045

square feet available

Less than 1 mile

From the I-15 freeway

Major Distribution Hub

Can service 8 different markets within a one day truck drive

Under 5 miles

To the Las Vegas Strip & Harry Reid International Airport

## Property Description

- Available ±13,045 SF
- ±1,677 Proposed Office Space
- ESFR Fire Sprinkler System with a 25.2K factor operating with 1310.9gpm at 34.5psi
- Three (3) Dock High Loading Doors
- One (1) Grade Level Loading Door
- 24' Minimum Clear Height
- Ample Parking
- Concrete Tilt-Up Construction

## Highway Access

- Close proximity to Blue Diamond Road and Las Vegas Blvd exit ramp off of the I-15 freeway

## Location

- Convenient access to the Las Vegas Strip, T-Mobile Arena, Allegiant Stadium and Las Vegas Convention Center corridor.
- Near an abundance of restaurants, shopping venues, and industrial owners/users and manufacturing/distribution facilities.
- Conveniently located in the heart of the Las Vegas Southwest submarket with easy access to the I-15 and I-215 Freeways, Harry Reid

International Airport, Town Square and the Las Vegas Strip.

- Annual average traffic counts exceeding 238,000 vehicles daily.

## Zoning

- MD, Designated Manufacturing

## Lease Type

- Prologis Clear Lease
- Operating Expense Cost Certainty

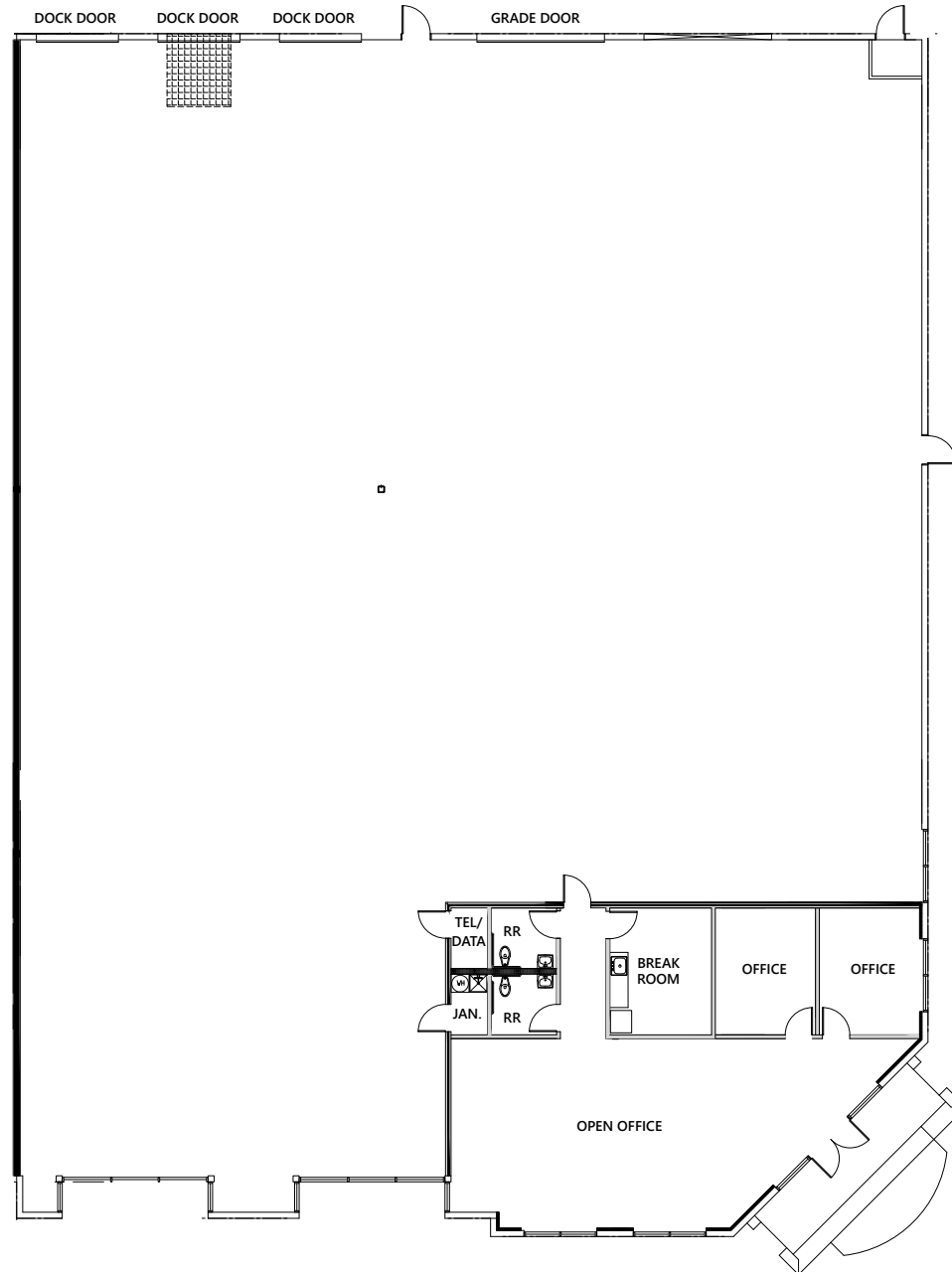
# Warm Springs Distribution Center #13

7750 Dean Martin Drive, Suite 406 | Las Vegas, NV 89139



# Warm Springs Distribution Center #13

7750 Dean Martin Drive, Suite 406 | Las Vegas, NV 89139



Proposed Space Plan



**C&W - Nick Abraham**

Director  
 nick.abraham@cushwake.com  
 ph +1 702 605 1620  
 Lic. S.0176348  
 6725 Via Austi Parkway, Suite 275  
 Las Vegas, NV 89119 USA

**Prologis - Renee Carroll**

Senior Leasing Manager  
 rcarroll@prologis.com  
 Main: +1 702 891 9503  
 3883 Howard Hughes Parkway, Suite 850  
 Las Vegas, NV 89169 USA

**C&W - Greg Tassi, SIOR**

Executive Managing Director  
 greg.tassi@cushwake.com  
 ph +1 702 605 1713  
 Lic. S.0056472  
 6725 Via Austi Parkway, Suite 275  
 Las Vegas, NV 89119 USA

**Prologis - Lisa Brady**

VP - Market Officer  
 lbrady@prologis.com  
 Main: +1 702 891 9141  
 Lic. B.1002217  
 3883 Howard Hughes Parkway, Suite 850  
 Las Vegas, NV 89169 USA  
 www.prologis.com | NYSE: PLD  
 Twitter: @Prologis

Prologis is the leading owner, operator and developer of industrial logistics real estate with approximately 1.0 billion square feet (93 million square meters) owned and under management in 20 countries on four continents.

© 2022 Cushman & Wakefield. All rights reserved. The information contained in this communication is strictly confidential. This information has been obtained from sources believed to be reliable but has not been verified. No warranty or representation, express or implied, is made as to the condition of the property (or properties) referenced herein or as to the accuracy or completeness of the information contained herein, and same is submitted subject to errors, omissions, change of price, rental or other conditions, withdrawal without notice, and to any special listing conditions imposed by the property owner(s). Any projections, opinions or estimates are subject to uncertainty and do not signify current or future property performance.