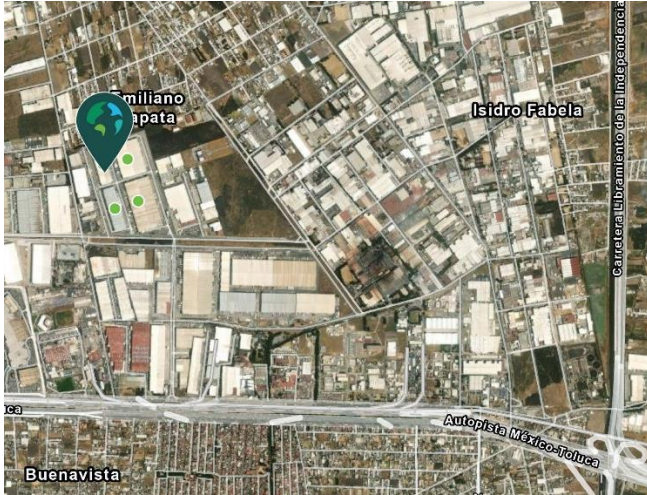


31,680 SQF/ 2,943 SQM

Industrial Space for Lease



Prologis Park Toluca - Building 2

Calle Industria Eléctrica, Manzana 3, Lote 3
Lerma, Estado de México, México

LOCATION

- Located in one of the top industrial zones of Toluca Market. (Federal Highway 134 Toluca-Naucalpan)
- 4 Building Industrial Complex
- Strong labor pool

FACILITY

- Available Area: 31,680 SQF / 2,943 SQM
- Office Area: 1,475 SQF / 137 SQM
- Minimum Clear Height: 9.4 m / 31 ft.
- Dock Doors: 6
- Drive In Doors: 1
- Truck Court Depth 40 m / 131 ft

ADVANTAGES

- Automated QR Access Control
- Dedicated Prologis Customer Experience Teams offer on-site service
- Prime Location for Logistics and Manufacturing Operations

31,680 SQF/ 2,943 SQM

Industrial Space for Lease



Prologis

Sandra Solís

sesolis@prologis.com

ph +52 (55) 1105 2932

cell +52 (55) 2300 8430

Paseo de los Tamarindos 90 Torre 2 Piso 22

Bosques de las Lomas CDMX, 05120 México

Prologis

Karina Xibillé

kxibille@prologis.com

ph +52 (55) 1105 2929

cell +52 (55) 4800 6663

Paseo de los Tamarindos 90 Torre 2 Piso 22

Bosques de las Lomas CDMX, 05120

