

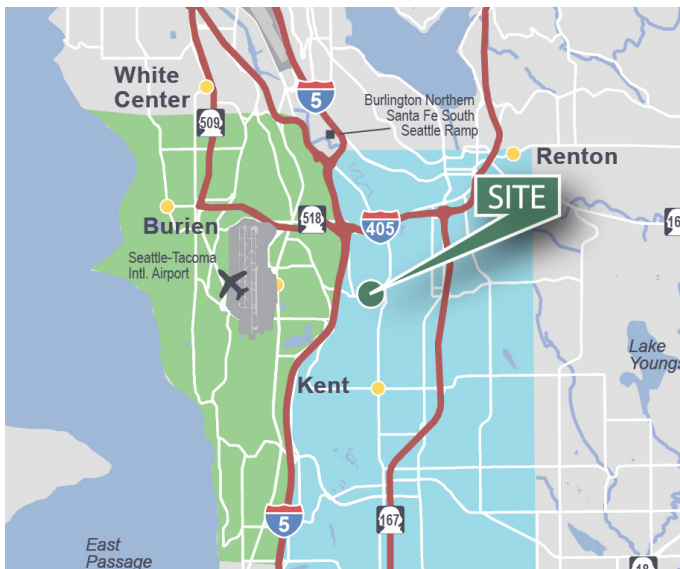
18,000 SF

Industrial Space For Lease



Prologis Park Tukwila 1

1131 Andover Park W
Tukwila, WA 98188 USA



LOCATION

- Easy access to I-5, I-405 and SR 167
- Within 5 miles of Sea-Tac Airport

FACILITY

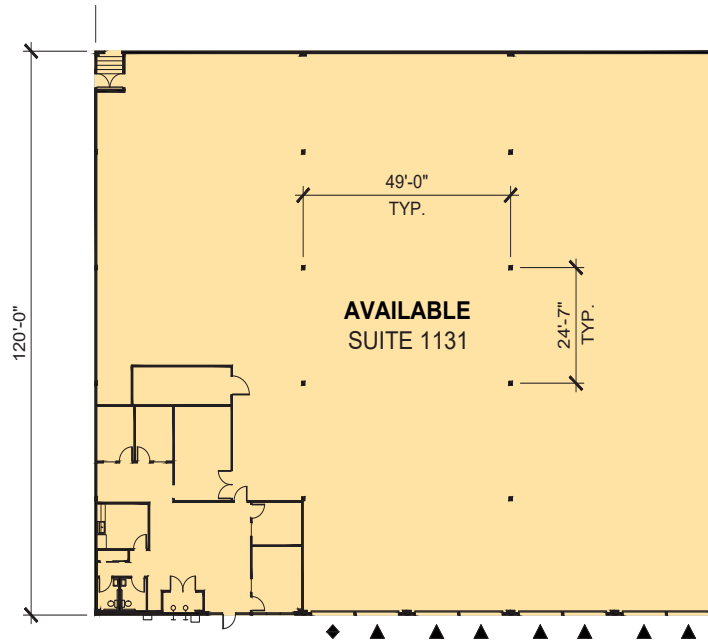
- 18,000 SF total available
- 2,114 of office space
- 24' clear height
- 7 dock-high doors
- 1 grade-level door
- 50'0" x 24'7" column spacing
- Available 10/01/2021
- Strong corporate image
- Use Prologis Essentials to help with pricing on forklifts and racking

18,000 SF

Industrial Space For Lease



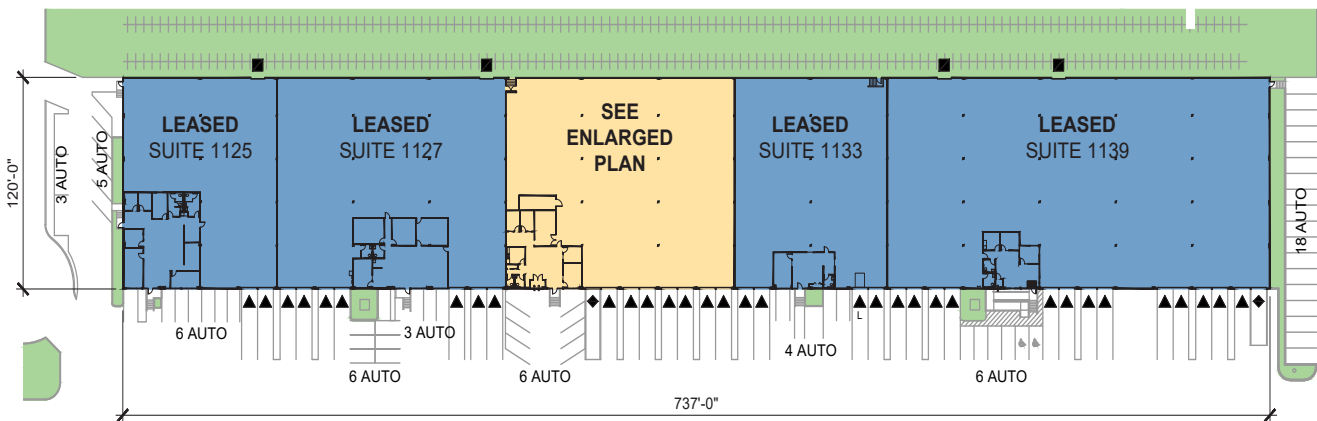
Floor Plan



Legend

- ▲ Dock-high door
- ◆ Grade-level door

Site Plan



Colliers International

Matt McGregor
Matt.McGregor@Colliers.com
ph +1 206 624 7401
cell +1 206 851 4616
601 Union Street
Suite 5300
Seattle, WA 98101 USA

Bill Condon
Bill.Condon@Colliers.com
ph +1 206 624 7400
cell +1 206 235 9732
601 Union Street
Suite 5300
Seattle, WA 98101 USA

Bob Santucci
Bob.Santucci@Colliers.com
ph +1 206 287 0213
cell +1 206 949 2729
601 Union Street
Suite 5300
Seattle, WA 98101 USA

Prologis

Lucca Merlino
lmerlino@prologis.com
ph +1 206 414 7621
cell +1 206 498 6511
5900 Airport Way S
Suite 300
Seattle, WA 98108 USA

