

22,406 SF

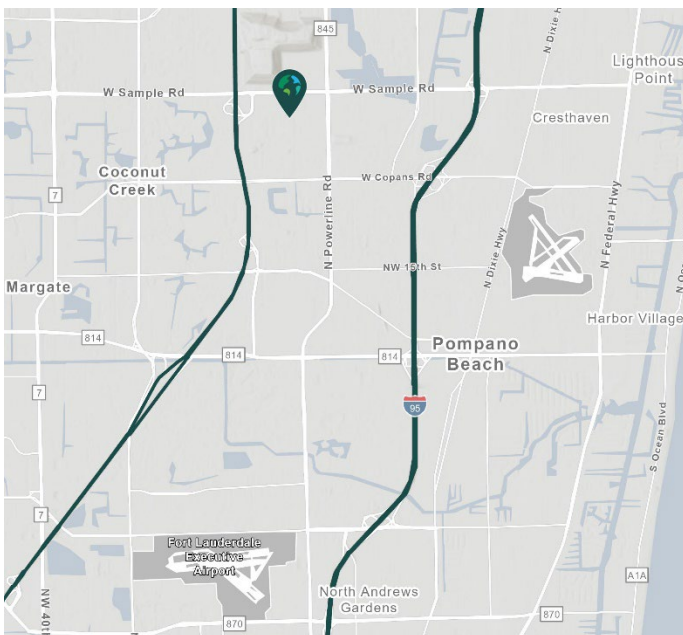
Industrial Space For Lease



Prologis Pompano Park 1



3200 NW 27th Avenue
Pompano Beach, FL 33069 USA



LOCATION

- Located on the east side of NW 27th Avenue (Blount Road), between Copans Road and Sample Road
- Strategically located between Interstate 95 and the Florida Turnpike

FACILITY

- Suite 100
- 81,692 SF total building size
- 22,406 SF | 2,500 SF Office – Suite 100 available
 - 3,500 SF climate controlled room in the warehouse
 - 5 dock high doors, all with edge of dock levelers and scissor gates
- 30' clear ceiling height
- ESFR sprinkler system
- 170' truck court depth
- 84 total parking stalls
- 45' x 50' typical column spacing
- Available Immediately

ADVANTAGES AND AMENITIES

- Prologis Clear Lease[®] - Know your lease expenses and capital cost with greater certainty

Your single-source service for efficient move-in and operations: [prologisessentials.com](https://www.prologisessentials.com)



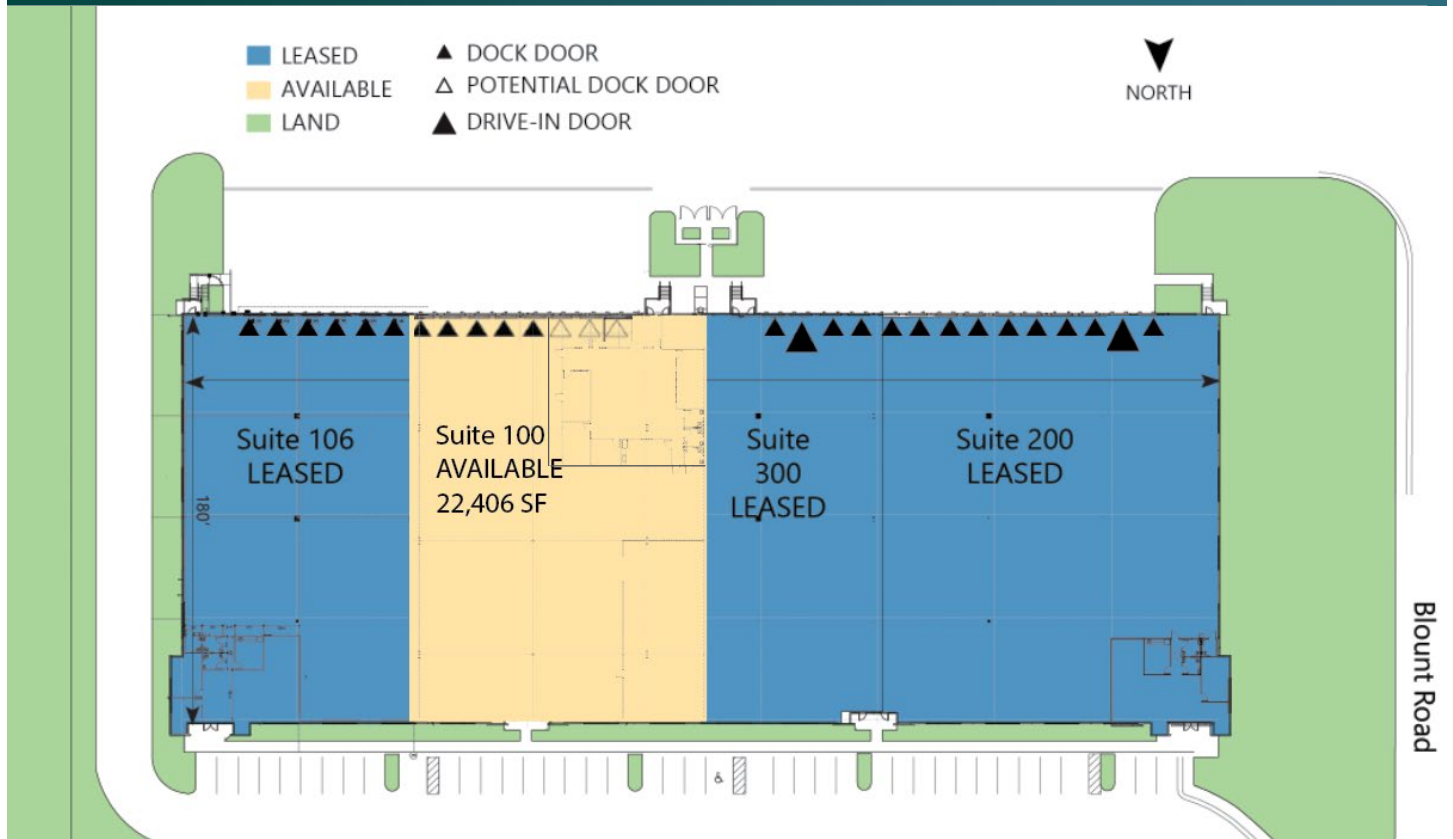
Scan the QR code for more info!

22,406 SF

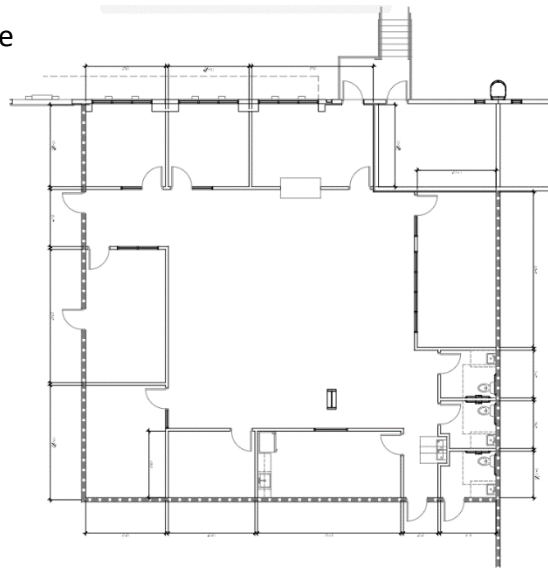
Industrial Space For Lease



Prologis Pompano Park 1



2,500 SF Office



Chris Metzger, SIOR
chris.metzger@cushwake.com
ph +1 954 771 0800
cell +1 954 415 9155
225 NW Mizner Boulevard
Suite 300
Boca Raton, FL 33432 USA

Prologis

Ashley McMullen
amcmullen@prologis.com
ph +1 954 316 1778
cell +1 954 909 3022
201 East Las Olas Boulevard
Suite 1550
Fort Lauderdale, FL 33301 USA