

38,184 SF

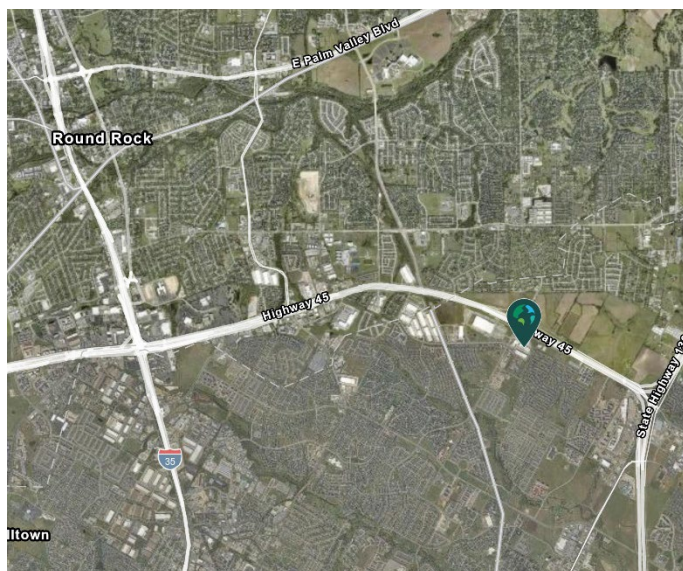
Industrial Space For Lease



Prologis Heatherwilde 45 Bldg 3



18919 Heatherwilde Blvd, Suite 130
Pflugerville, TX 78660 USA



LOCATION

- Located off the frontage road of SH 45 and Heatherwilde Blvd.
- Convenient to major employers: UPS, Living Spaces and BAE Systems
- Approximately 20 miles to Central Business District

FACILITY

- 38,184 sf available
- 1,527 sf office
- 28' clear height
- 60' x 52' column spacing
- 8 dock high doors, 1 with EOD levelers
- 1 drive-in door
- ESFR sprinkler system

ADVANTAGES AND AMENITIES

- Rear load configuration
- Access to the [Prologis Essentials](#) platform, which includes:
 - [Operations Essentials](#)
 - [Energy + Sustainability Essentials](#)
 - [Mobility Essentials](#)
 - [Workforce Essentials](#)

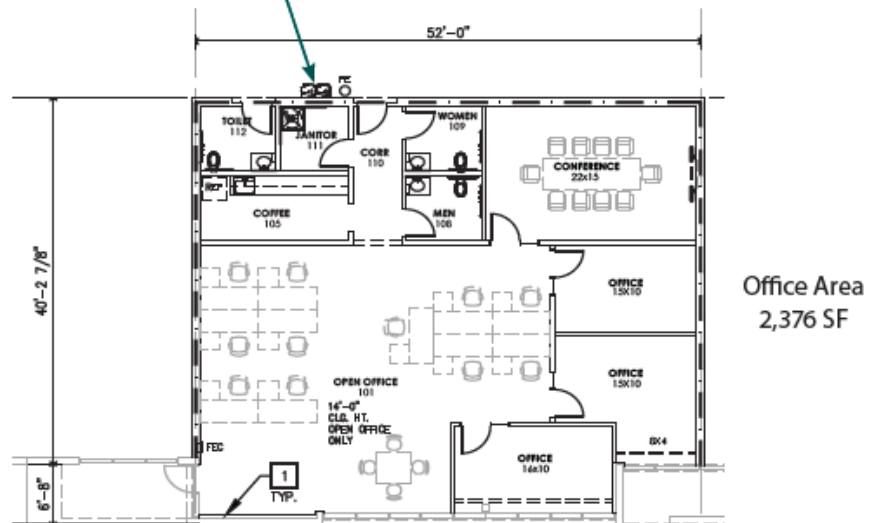
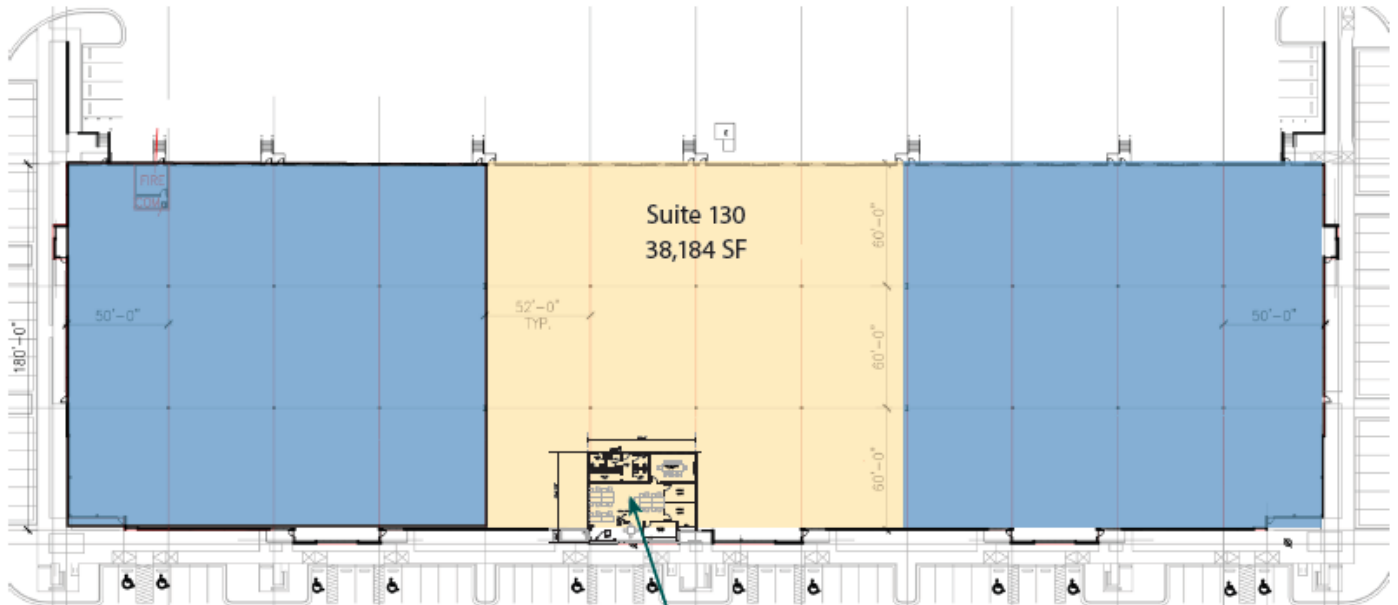
Your single-source service for efficient move-in and operations: [prologisessentials.com](https://www.prologisessentials.com)

38,184 SF

Industrial Space For Lease



Prologis Heatherwilde 45 Bldg 3



Live Oak

Ryan Whalen
rwhalen@liveoak.com
ph +1 512 472 5000
cell +1 512 803 9928
2725 Bee Cave Road
Austin, TX 78746 USA

Live Oak

Doug Thomas
doug@liveoak.com
ph +1 512 472 5000
cell +1 512 695 3985
2725 Bee Cave Road
Austin, TX 78746 USA

Live Oak

Dax Benkendorfer
dax@liveoak.com
ph +1 512 472 5000
cell +1 512 848 2581
2725 Bee Cave Road
Austin, TX 78746 USA

Prologis

Whitney Williamson
wwilliamson@prologis.com
ph +1 972 884 9244
cell +1 817 781 5186
600 Congress Avenue, Suite 14026
Austin, TX 78701 USA

