

18,543 SF

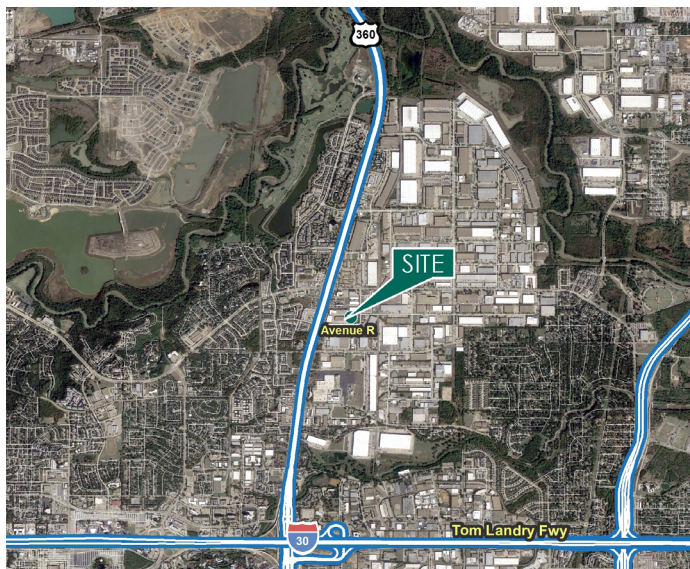
Industrial Space For Lease



Prologis Great Southwest 70



607 Avenue R
Grand Prairie, TX 75050 USA



LOCATION

- Located in the heart of the North Great Southwest industrial submarket with easy access to SH 360, I-30, and SH 161

FACILITY

- 18,543 sf available
- 991 sf office
- 19' clear height
- 36'-3" x 42'-0" typical bay spacing
- 6 (10' x 10') overhead dock doors, 1 pit leveler
- 1 (10' x 10') overhead dock door with ramp
- Fully sprinklered

ADVANTAGES AND AMENITIES

- Access to the [Prologis Essentials](#) platform, which includes:
 - [Operations Essentials](#)
 - [Energy + Sustainability Essentials](#)
 - [Mobility Essentials](#)
 - [Workforce Essentials](#)

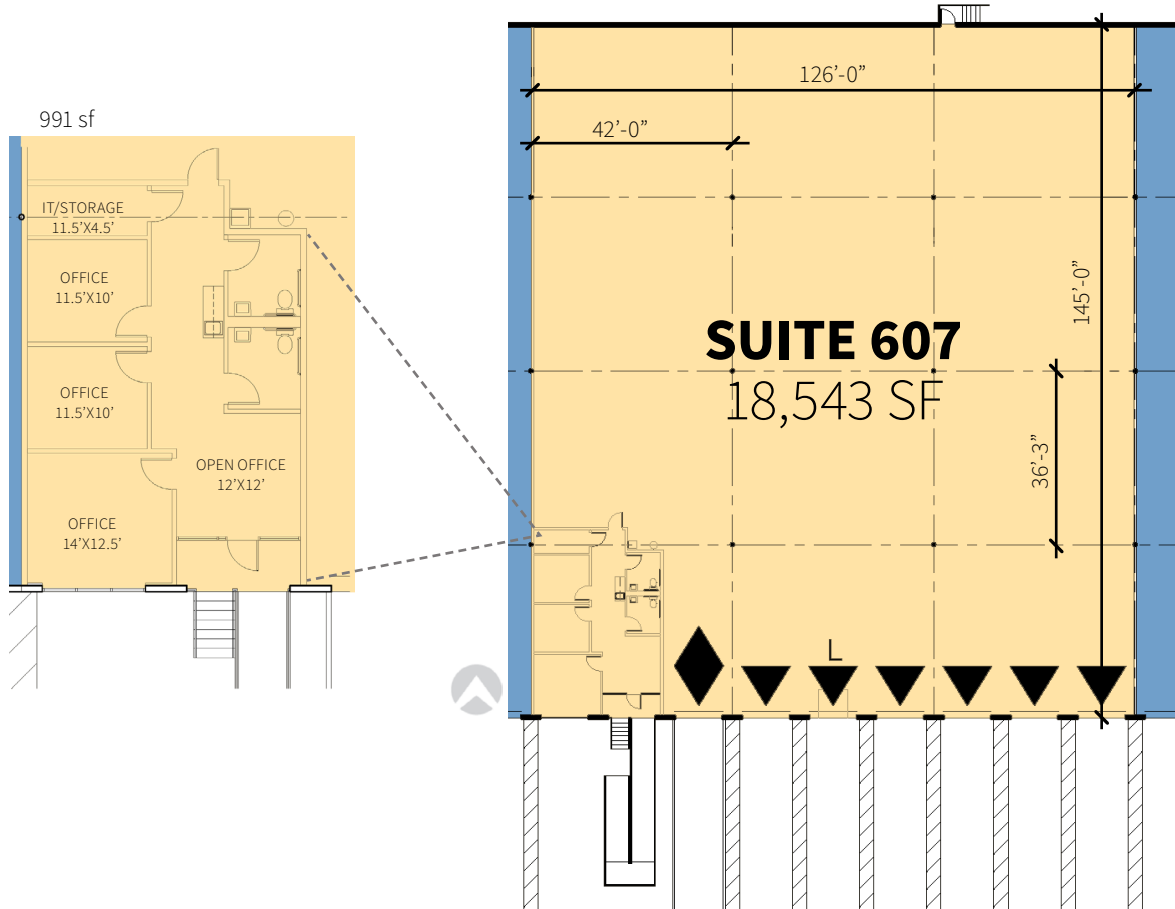
Prologis Essentials: your single-source service for efficient move-in and operations at prologisessentials.com

18,543 SF

Industrial Space For Lease



Prologis Great Southwest 70



AVENUE R

Mercer Company
Corby Hodgkiss, SIOR
Executive Vice President
chodgkiss@mercero-company.com
ph +1 214 630 7010
cell +1 469 360 3918
2461 N Stemmons Freeway
Dallas, TX 75207 USA

Mercer Company
Harrison Putt
Market Director
hputt@mercero-company.com
ph +1 214 630 7010
cell +1 214 945 7306
2461 N Stemmons Freeway
Dallas, TX 75207 USA

Prologis
Ryan McNaughton
Senior Leasing Manager
rmcnaughton@prologis.com
ph +1 972 884 9218
cell +1 214 673 9489
2021 McKinney Avenue
Suite 1050
Dallas, TX 75201 USA

No warranty or representation, expressed or implied, is made as to the accuracy of the information contained herein, and same is submitted subject to error and omissions.