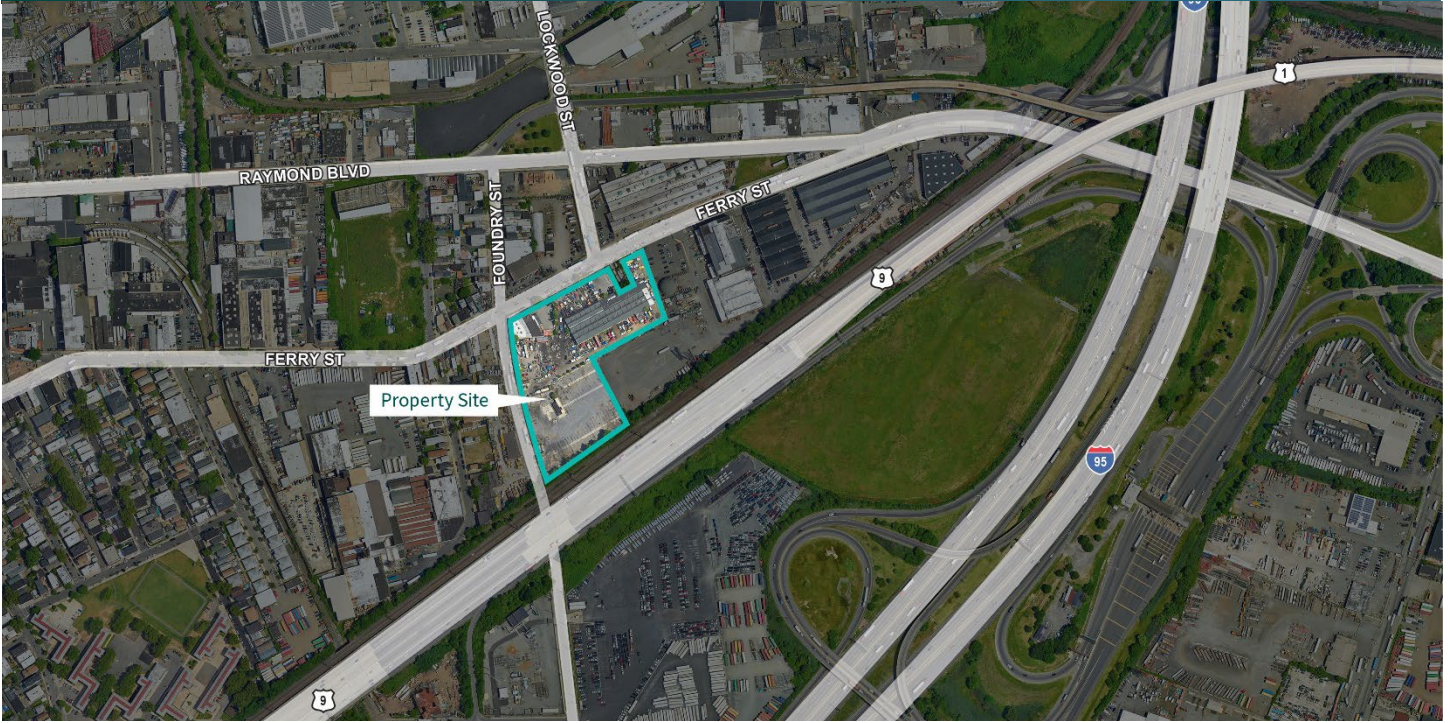


10,000 SF on 5.6 Acres

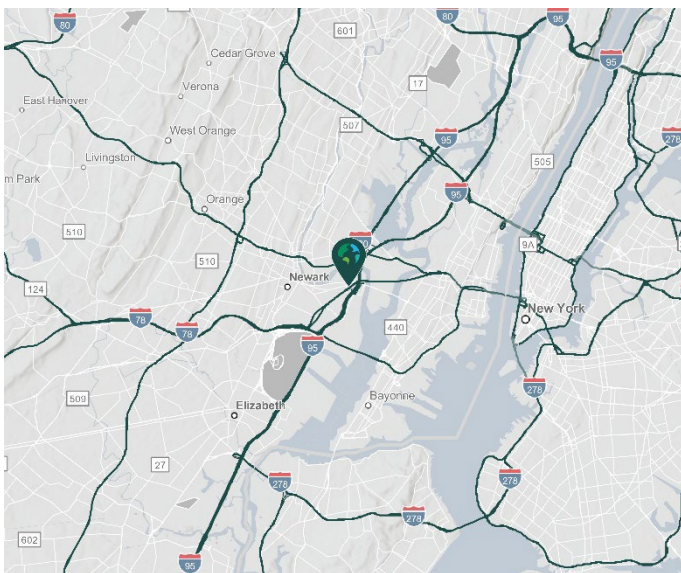
Industrial Space For Lease



Prologis Ports Newark | 667-683 Ferry Street



667-683 Ferry Street
Newark, NJ 07105 USA



LOCATION

- Immediate access to Exit 15E of NJ Turnpike, Routes 1 & 9
- ± 5 miles from Port Newark-Elizabeth
- ± 6 miles from Newark Liberty International Airport

FACILITY

- 10,000 SF total building size
- 10,000 SF available space
- 93 trailer parking spaces
- 12 car parking spaces
- ESFR sprinkler system
- LED motion sensor lighting

ADVANTAGES AND AMENITIES

- Fast, cost-effective forklift and racking sourcing through Prologis Essentials
- Prologis Clear Lease® – Know your lease expenses and capital costs with greater certainty before you sign

Prologis Essentials: your single-source service for efficient move-in and operations at [prologisessentials.com](https://www.prologisessentials.com)

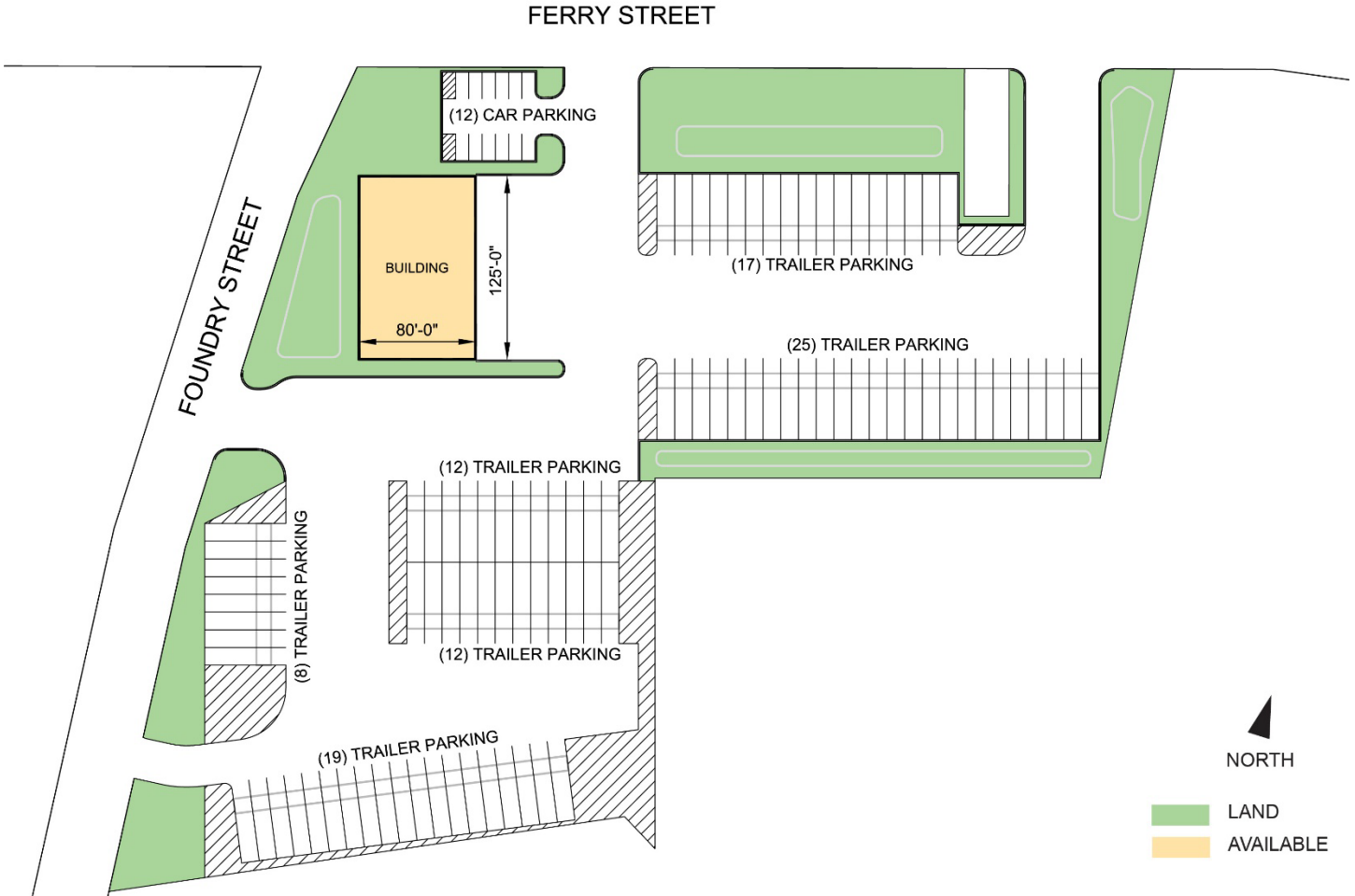
www.prologis.com

10,000 SF on 5.6 Acres

Industrial Space For Lease



Prologis Ports Newark | 667-683 Ferry Street



JLL

Chris Hile
chris.hile@jll.com
ph +1 201 528 4416
cell +1 201 304 3427
One Meadowlands Plaza
Suite 804
East Rutherford, NJ 07073 USA

JLL

Ignatius Armenia
Ignatius.Armenia@jll.com
ph +1 201 528 4419
cell +1 551 227 1748
One Meadowlands Plaza
Suite 804
East Rutherford, NJ 07073 USA

JLL

Dean Brody
Dean.Brody@jll.com
ph +1 201 528 4410
cell +1 201 417 0618
One Meadowlands Plaza
Suite 804
East Rutherford, NJ 07073 USA

Prologis

Sarah Rutherford
srutherford@prologis.com
ph +1 201 528 9576
cell +1 551 206 6985
One Meadowlands Plaza
Suite 100
East Rutherford, NJ 07073 USA

Prologis Essentials: your single-source service for efficient move-in and operations at prologisessentials.com

No warranty or representation, expressed or implied, is made as to the accuracy of the information contained herein, and same is submitted subject to error and omissions.