

12,600 SF

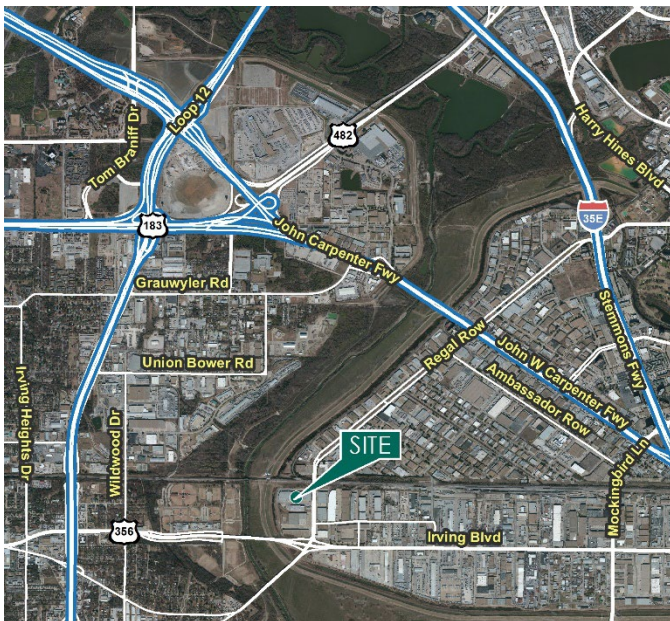
Industrial Space For Lease



Prologis Stemmons 11



151 Regal Row, Suite 118
Dallas, TX 75247 USA



LOCATION

- Easy access to major highways including I-35E (2 mi.), I-30 (3 mi.), TX-183 (1.3 mi.) and TX-12 (1 mi.)
- Ten minutes to Love Field

FACILITY

- 12,600 sf available
- 5,347 sf office
- 18' clear height
- 2 (16' x 10') overhead dock doors, 1 with leveler

ADVANTAGES AND AMENITIES

- Building frontage on Regal Row
- Access to the [Prologis Essentials](#) platform, which includes:
 - [Operations Essentials](#)
 - [Energy Essentials](#)
 - [Workforce Essentials](#)
 - [Transportation Essentials](#)
 - [Digital Essentials](#)

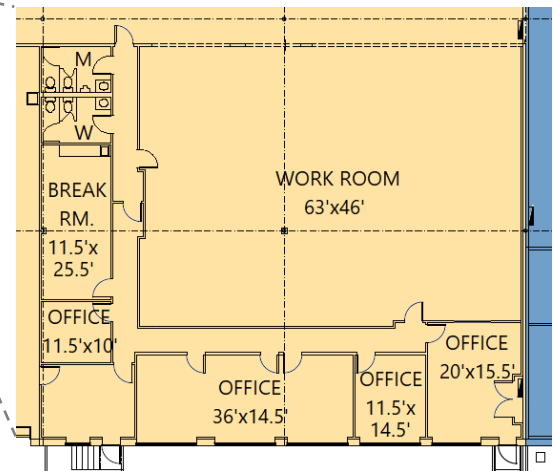
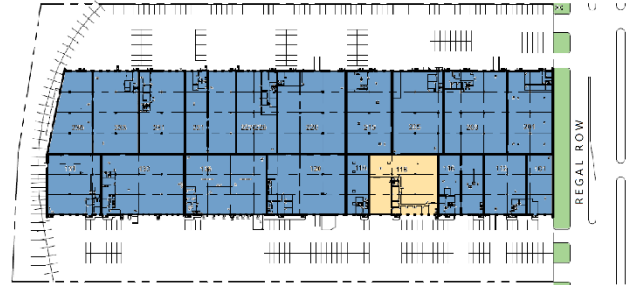
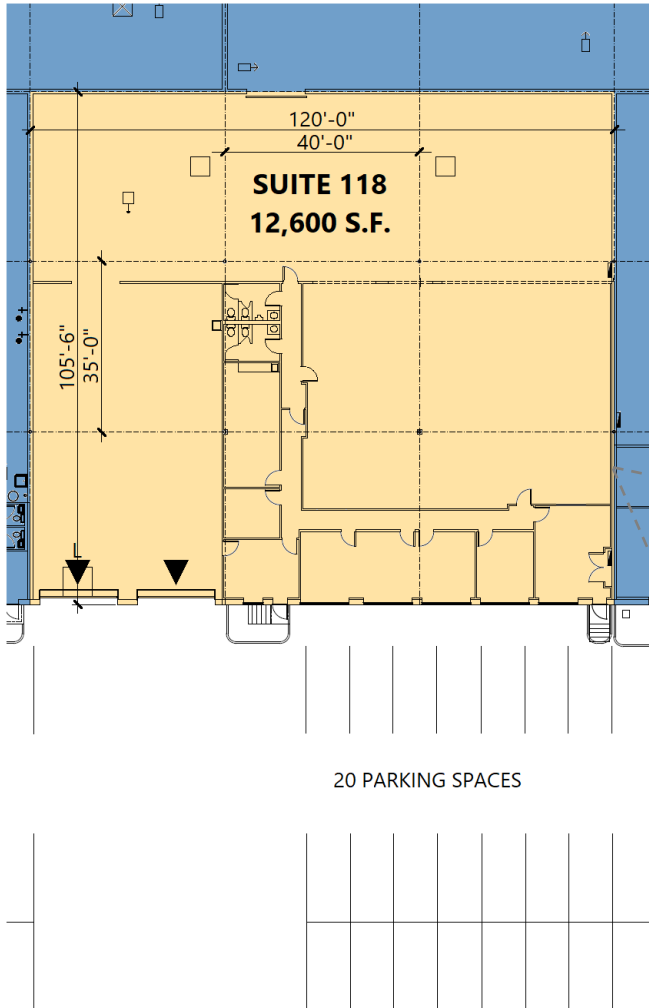
Prologis Essentials: your single-source service for efficient move-in and operations at prologisessentials.com

12,600 SF

Industrial Space For Lease



Prologis Stemmons 11



NAI Robert Lynn

Chase Miller
cmiller@nairl.com
ph +1 214 256 7131
cell +1 214 770 5495
4851 LBJ Freeway
10th Floor
Dallas, TX 75244 USA

Prologis

Sal Giunta
sg Giunta@prologis.com
ph +1 972 884 9247
cell +1 970 443 7574
2021 McKinney Avenue
Suite 1050
Dallas, TX 75201 USA

Prologis Essentials: your single-source service for efficient move-in and operations at [prologisessentials.com](https://www.prologisessentials.com)

No warranty or representation, expressed or implied, is made as to the accuracy of the information contained herein, and same is submitted subject to error and omissions.