

81,692 SF

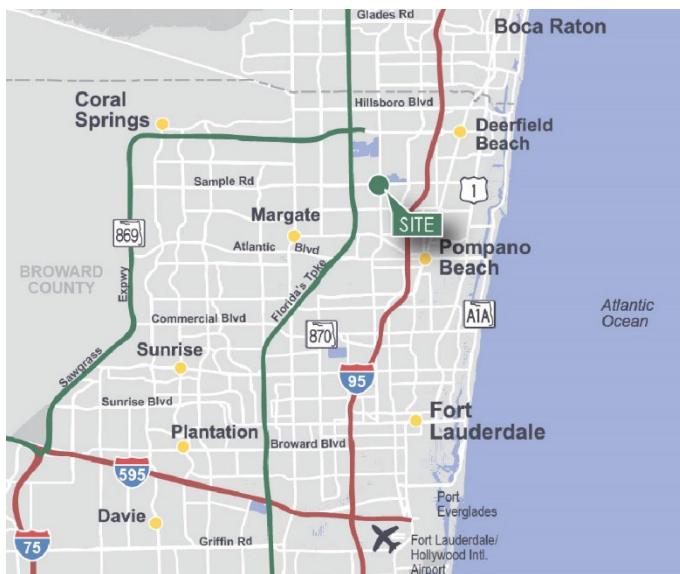
Industrial Space For Lease



Prologis Pompano Park 2



3000 NW 27th Avenue
Pompano Beach, FL 33069 USA



LOCATION

- Located on the east side of NW 27th Avenue (Blount Road), between Copans Road and Sample Road
- Strategically located between Interstate 95 and the Florida Turnpike

FACILITY

- 81,692 SF total building size
- 78,315 SF warehouse; 3,377 SF office
- 27 dock doors
- 1 drive in door
- 30' clear ceiling height
- ESFR sprinkler system
- 165' truck court depth
- 93 total auto parking spots
- 50' x 45' typical column spacing
- 1600 Amps/ 480 Volt power
- 100% Air-conditioned warehouse
- Available September 1, 2023

ADVANTAGES AND AMENITIES

- Geographically central to service the Tri-County area of Broward, Palm Beach, and Miami-Dade Counties.
- Immediate access to Florida's Turnpike with I-95 and the Sawgrass Expressway just minutes away.
- Prologis Clear Lease® – Know your lease expenses and capital cost with greater certainty

**Your single-source service for efficient move-in
and operations: [prologisessentials.com](https://www.prologisessentials.com)**

www.prologis.com



Scan the QR code for more info!

81,692 SF

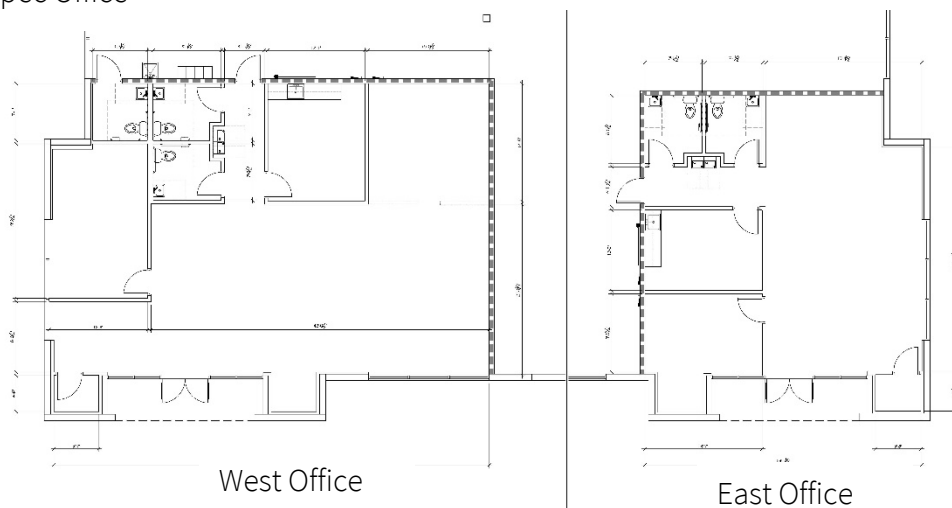
Industrial Space For Lease



Prologis Pompano Park 2



3,377 SF Spec Office



Chris J. Metzger, SIOR
chris.metzger@cushwake.com
ph +1 954 771 0800
cell +1 954 415 9155
225 NW Mizner Boulevard
Suite 300
Boca Raton, FL 33432 USA

Prologis

Ashley McMullen
amcmullen@prologis.com
ph +1 954 316 1778
cell +1 954 909 3022
201 East Las Olas Boulevard
Suite 1550
Fort Lauderdale, FL 33301 USA