

Premier Urban Logistics Location

# Oakland Coliseum Industrial Center

5800 Coliseum Way | Oakland, CA

±336,680 SF Warehouse For Lease

Jason Ovadia  
+1 510 285 5360  
jason.ovadia@am.jll.com  
Lic # 01742912

Patrick Metzger  
+1 510 285 5362  
patrick.metzger@am.jll.com  
Lic # 01888895

Greg Matter  
650 480 2220  
Greg.Matter@am.jll.com  
Lic #01380731

Jason Cranston  
jason.cranston@am.jll.com  
+1 650 480 2100  
Lic # 01253892

Robert Bisnette  
+1 510 661 4011  
rbisnette@prologis.com  
Lic # 01474433

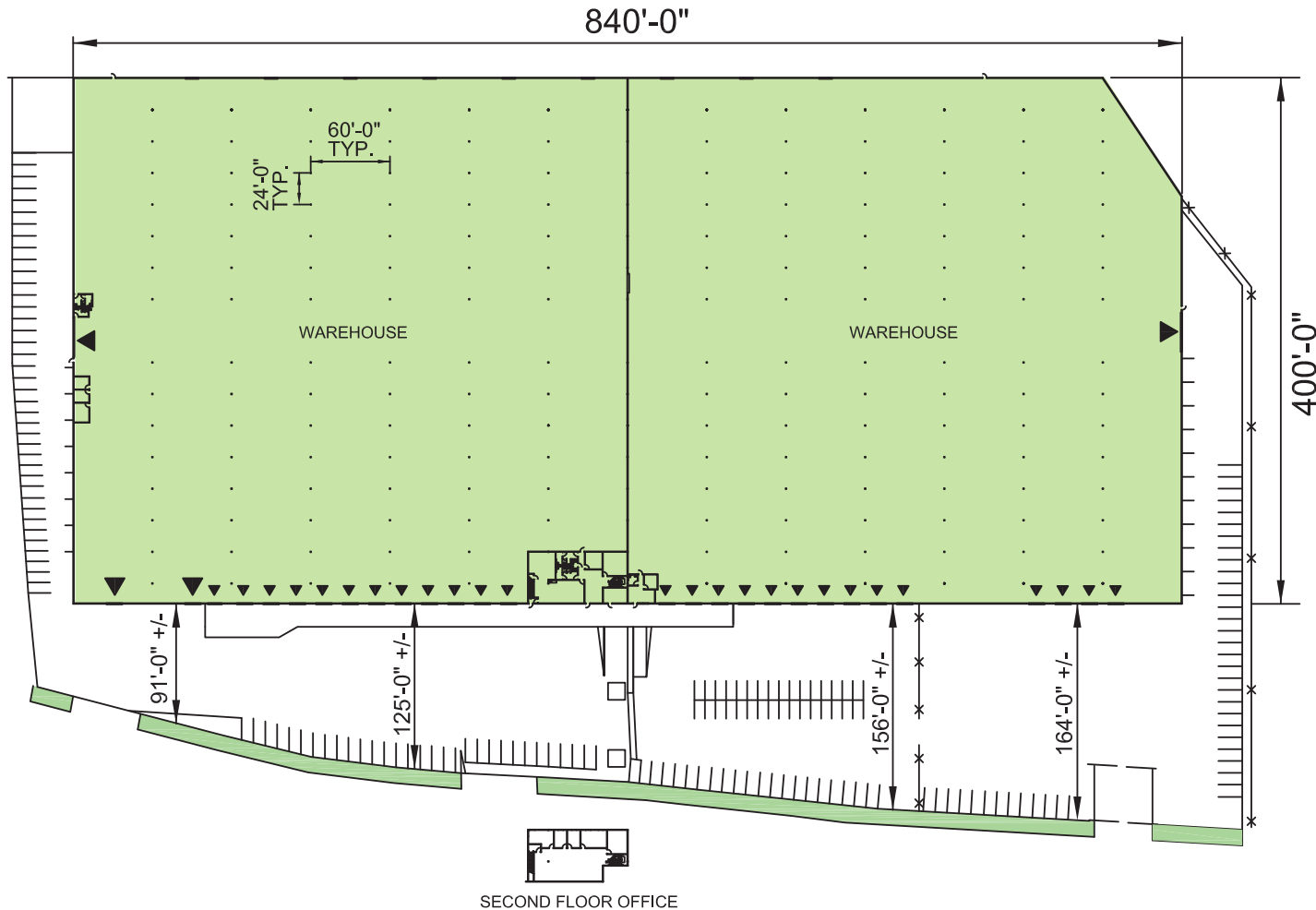


Jones Lang LaSalle Brokerage, Inc.  
Real Estate License # 01856260



Driving distance	
3.5 mi	Oakland International Airport
5.3 mi	Port of Oakland
16.2 mi	SF Financial District
16.2 mi	Port of San Francisco
27.5 mi	SF International Airport
36.4 mi	San Jose International Airport

## Current Building Configuration



±336,680 SF

Warehouse	±336,680 SF
Office	±16,380 SF
Site Size	9.93 acres

Column spacing

24' w x 60' d

Clear height

24' - 26'

Power

Power 8,000a/ 480/277v  
3-phase  
Backup Generator

30 loading doors

Dock high	26
Grade-level	4

Parking Ratio

±0.50/1,000

Sprinkler Density

0.32 GPM / 2,000 SF

Zoning

M-40: Heavy Industrial



## ACCESS TO LABOR

Oakland is home to almost **6,000 resident manufacturing workers** and over **11,000 resident logistics workers**.

**155,000 logistics workers** within 30 mins

**385,000 logistics workers** within 45 mins

**475,000 logistics workers** within 60 mins



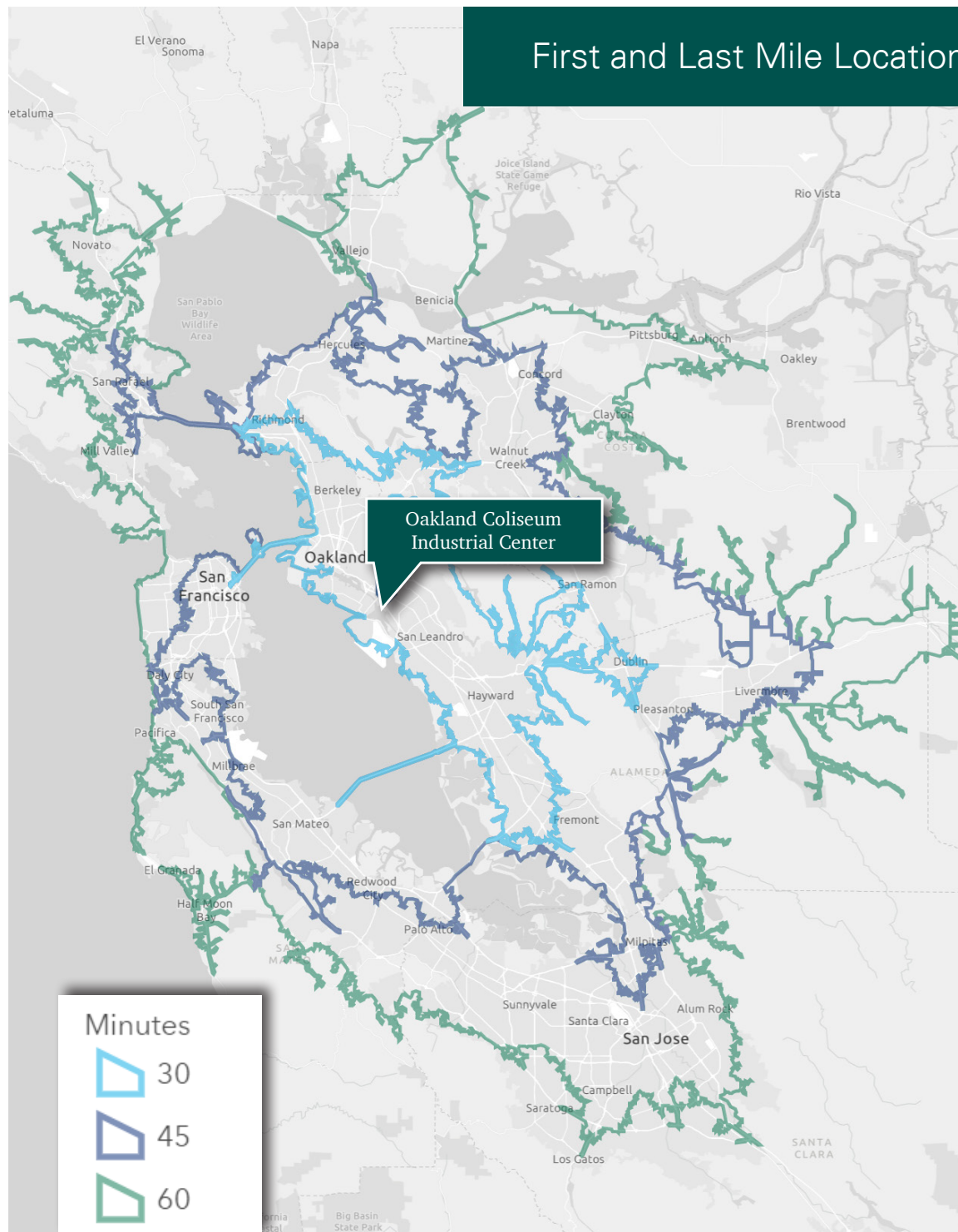
## ACCESS TO CONSUMERS

**Oakland is one of the top ranking cities in Northern California for consumer demand**

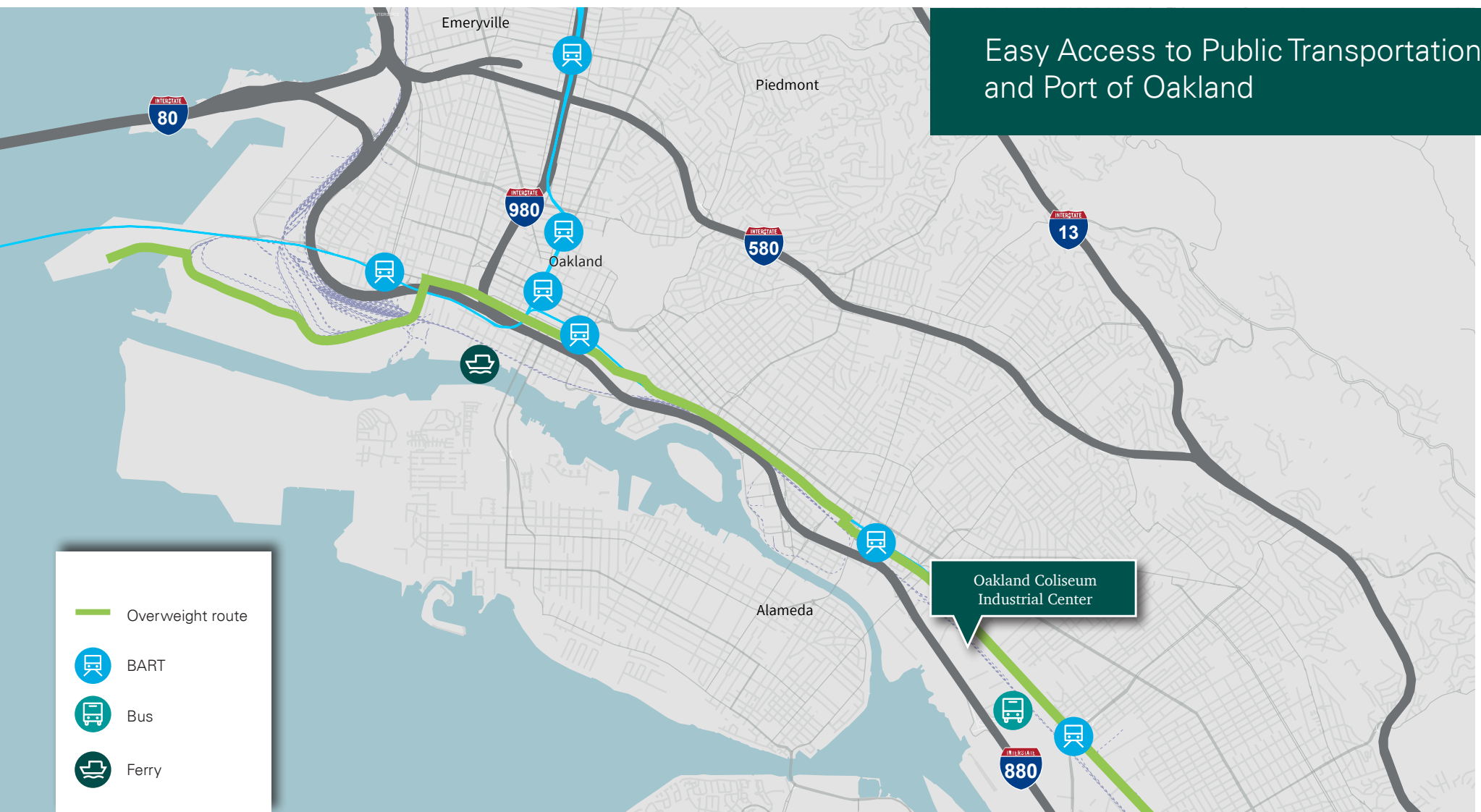
Almost **1.4 M residents** within a 30 min drive

Almost **3.5 M residents** within a 45 min drive

Almost **6 M residents** within a 60 min drive







## Easy Access for Commerce

- Direct Access to **Overweight Container Route** from Port of Oakland
- Union Pacific Rail Capabilities
- Within **1 mile** to Interstate 880
- Within **5.5 miles** to The Port of Oakland

## Easy Access for Talent

- **0.6 miles** to the nearest bus stop
- Within **1 mile** to Interstate 880
- **1.1 miles** to the Coliseum BART Station
- **5.7 miles** to the Ferry Terminal



## Premier Urban Logistics Location



Jason Ovia  
+1 510 285 5360  
jason.ovadia@am.jll.com  
Lic # 01742912

Patrick Metzger  
+1 510 285 5362  
patrick.metzger@am.jll.com  
Lic # 01888895

Greg Matter  
650 480 2220  
Greg.Matter@am.jll.com  
Lic #01380731

Jason Cranston  
jason.cranston@am.jll.com  
+1 650 480 2100  
Lic # 01253892

Robert Bisnette  
+1 510 661 4011  
rbisnette@prologis.com  
Lic # 01474433

### Corporate Headquarters

Pier 1, Bay 1  
San Francisco, CA 94111, USA  
Main: +1 415 394 9000  
info@prologis.com

### Prologis – Fremont

3353 Gateway Blvd.  
Fremont, CA USA 94538  
Main: +1 510 656 1900

©2020 Jones Lang LaSalle IP, Inc. All rights reserved. All information contained herein is from sources deemed reliable; however, no representation or warranty is made to the accuracy thereof. Jones Lang LaSalle Brokerage, Inc. Real Estate License # 01856260