

# ±50,433 SF

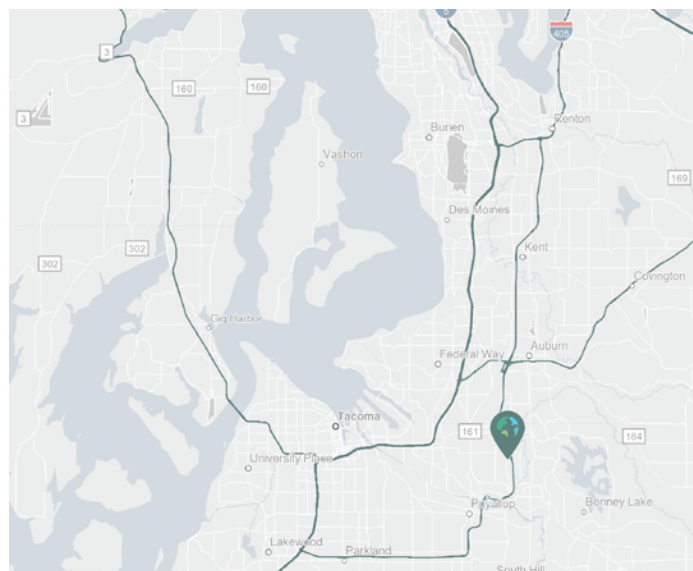
Industrial Space For Lease



## Prologis Park Sumner 24



3003 West Valley Highway  
Sumner, WA 98390



### LOCATION

- Building fronts Hwy-167 and West Valley Hwy
- Excellent access to Hwy-167 and visibility

### FACILITY

- ±123,211 total building SF
- ±50,433 SF available, Suite 200
- ±2,736 SF of office
- ±2,780 SF of unfinished mezzanine
- 30' clear-height
- 13 dock-high doors
- ±10 edge of dock levelers

### ADVANTAGES AND AMENITIES

- ESRF upgraded
- Three-phase power
- Truck court 120'
- Column spacing 50 x 60

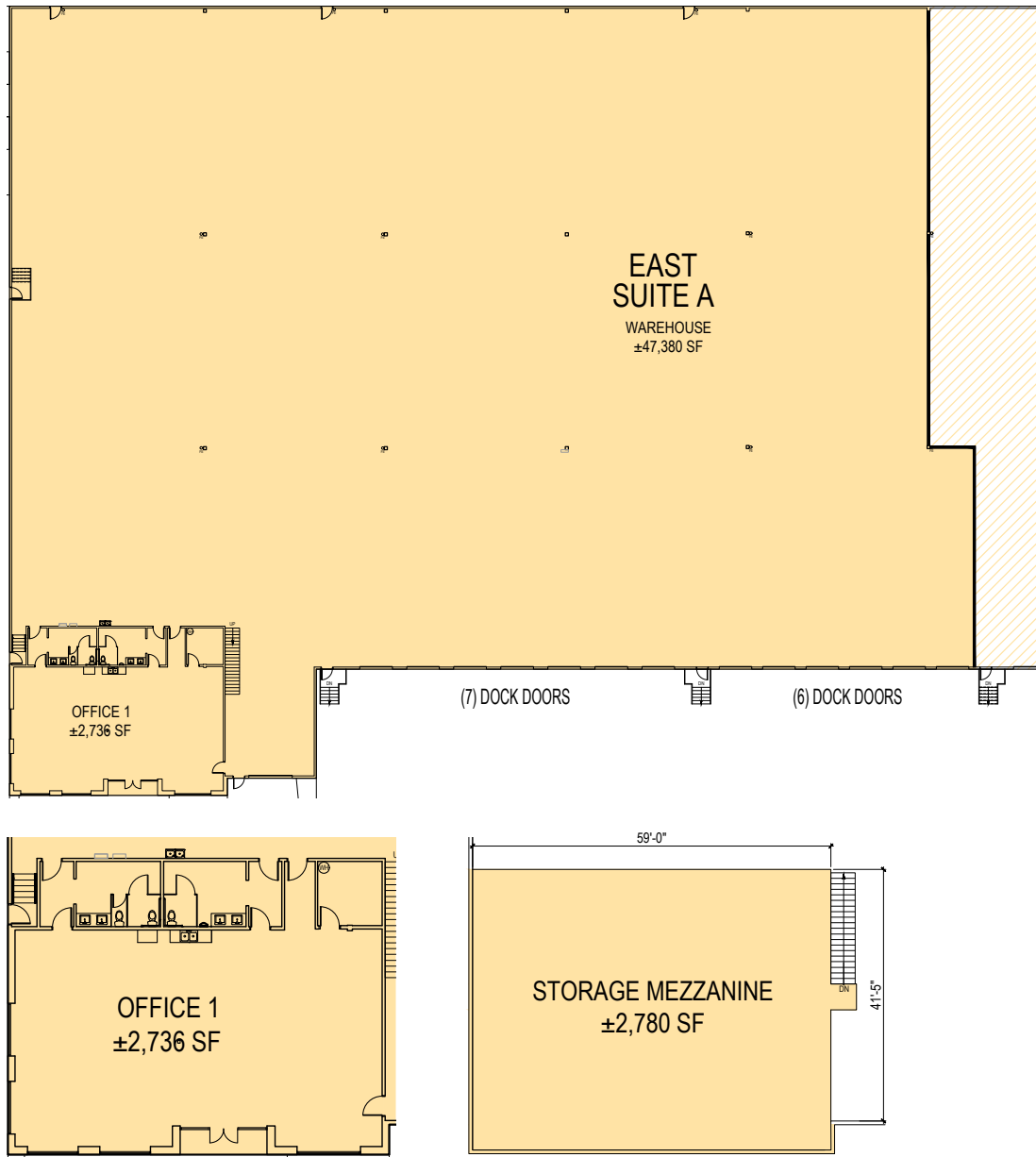
Your single-source service for efficient move-in and operations: [prologisessentials.com](https://www.prologisessentials.com)

# ±50,433 SF



Industrial Space For Lease

## Prologis Park Sumner 24



### Kidder Mathews

Todd Clarke  
todd.clarke@kidder.com  
ph +1 253 722 1422  
cell +1 253 381 5500  
1201 Pacific Ave  
Suite 1400  
Tacoma, WA 98402 USA

### Newmark

Thad Mallory, SIOR  
thad.mallory@nmrk.com  
ph +1 425 362 1410  
cell +1 425 985 0633  
10900 NE 4th St  
Suite 1430  
Bellevue, WA 98004 USA

### Kidder Mathews

Ty Clarke  
ty.clarke@kidder.com  
ph +1 253 722 1419  
cell +1 253 720 2211  
1201 Pacific Ave  
Suite 1400  
Tacoma, WA 98402 USA

### Prologis

Rick Kopla  
rkolpa@prologis.com  
ph +1 206 414 7610  
cell +1 206 949 5681  
5900 Airport Way  
Suite 300  
Seattle, WA 98108 USA