



9444 N WHITAKER RD, PORTLAND, OR 97217

Warehouse with Showroom
and Secure Yard



9444 N Whitaker Road, Portland, OR 97217

DEVELOPMENT HIGHLIGHTS

- High exposure location fronting Prologis Portland Meadows Industrial Park
- Showroom/display/office space
- Immediate access to I-5
- Dock & grade loading
- Surplus/fenced yard
- Planned amenity upgrades to area including food carts at Hayden Meadows Shopping Center

New vacancy to the market. The property is a rare mix of high quality showroom/retail, office and efficient warehouse production space with a secure yard. The property is part of Prologis Portland Meadows Industrial Park. It is adjacent to Hayden Meadows Retail complex home of Lowes, Dicks Sporting Goods, Fisherman Marine Supply and Guitar Center.

	SIZE	LOT SIZE	ZONING	CEILING HEIGHT	AVAILABLE	LEASE RATE
Subject Property	31,941 SF	77,991 SF	EG2	22'	July 1, 2025	Call For Rates



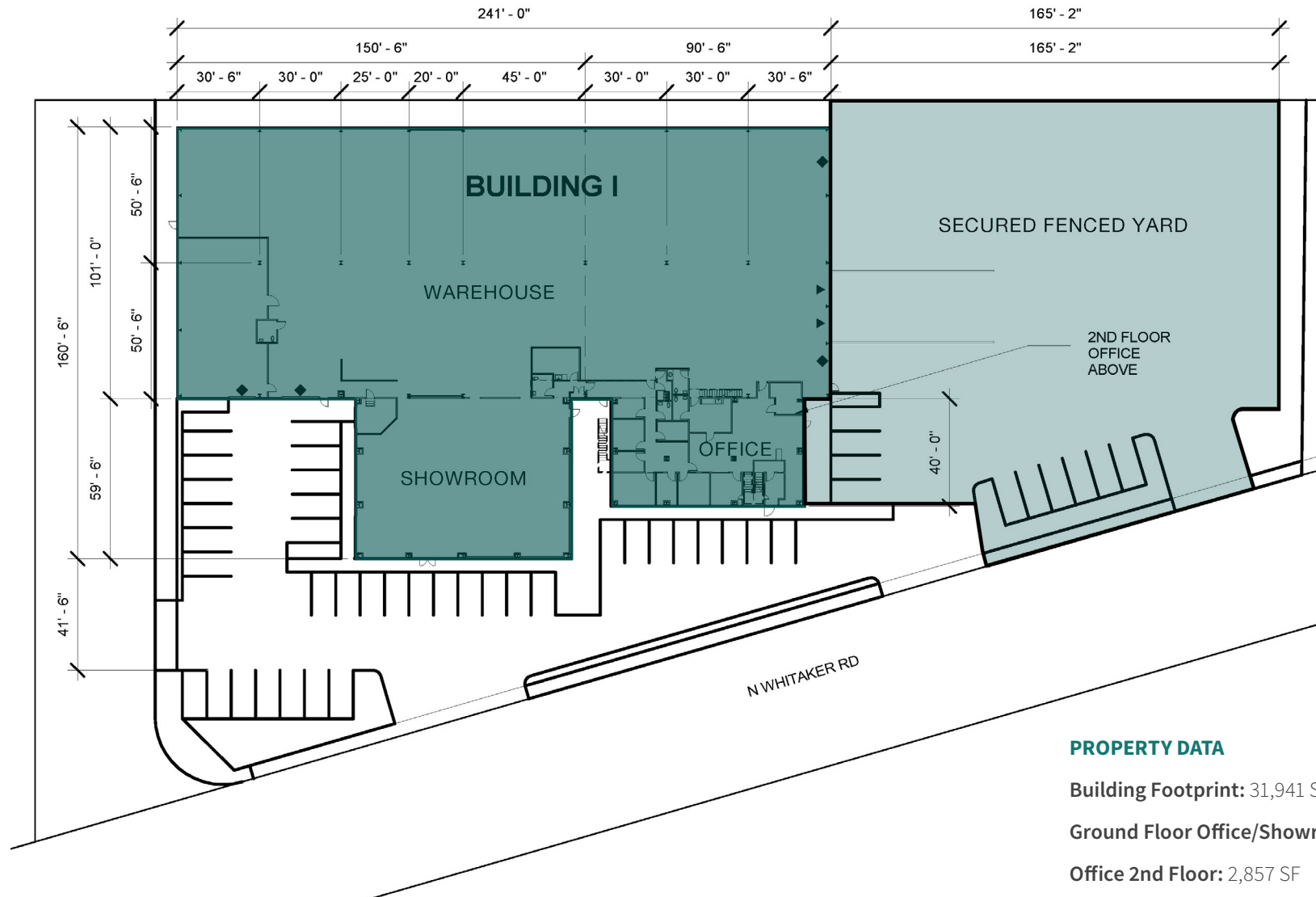
2 Centerpointe Drive, Suite 500,
Lake Oswego, OR 97035
www.macadamforbes.com | 503.227.2500

Todd Collins
503.972.7283
todd@macadamforbes.com

Kevin VandenBrink
503.972.7289
kevin@macadamforbes.com



AVAILABLE JULY 2025
31,941 SF

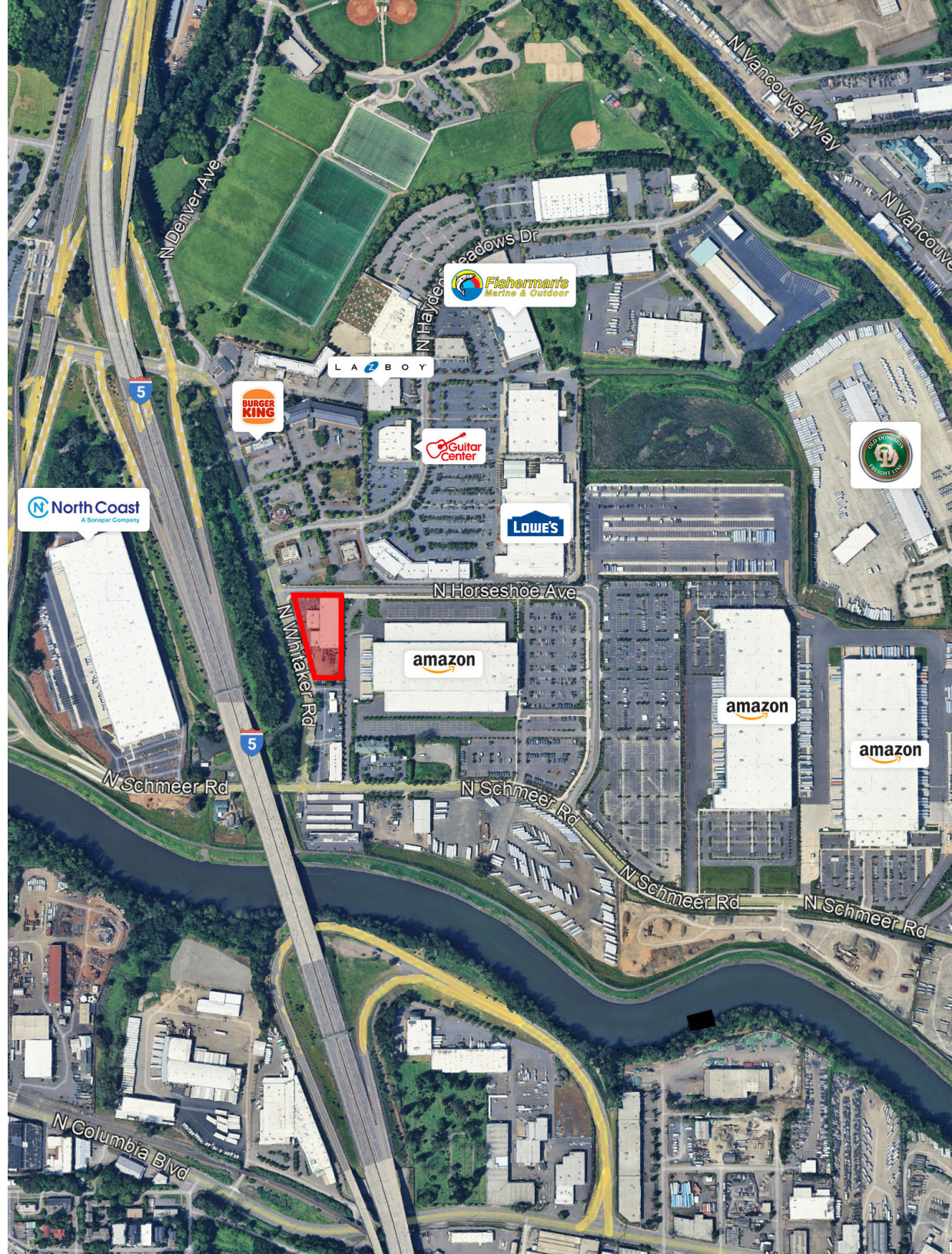
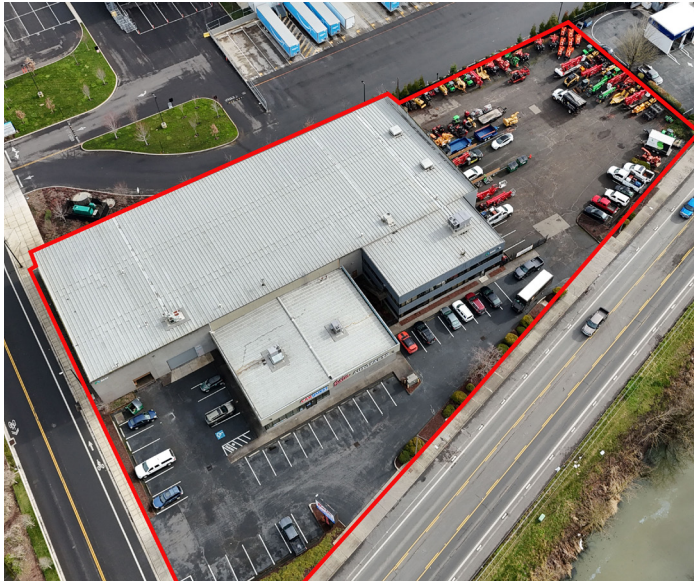


PROPERTY DATA

Building Footprint: 31,941 SF

Ground Floor Office/Showroom: 5,369 SF

Office 2nd Floor: 2,857 SF



2 Centerpoint Drive, Suite 500,
Lake Oswego, OR 97035
www.macadamforbes.com | 503.227.2500

Todd Collins
503.972.7283
todd@macadamforbes.com

Kevin VandenBrink
503.972.7289
kevinv@macadamforbes.com