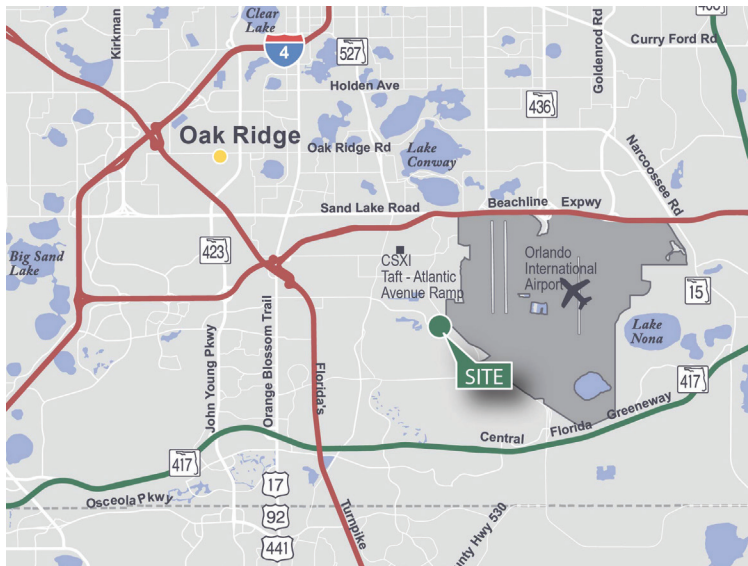


# 121,653 SF

**10620 Boggy Creek Road  
Orlando, FL 32824**

Prologis Park at AIPO



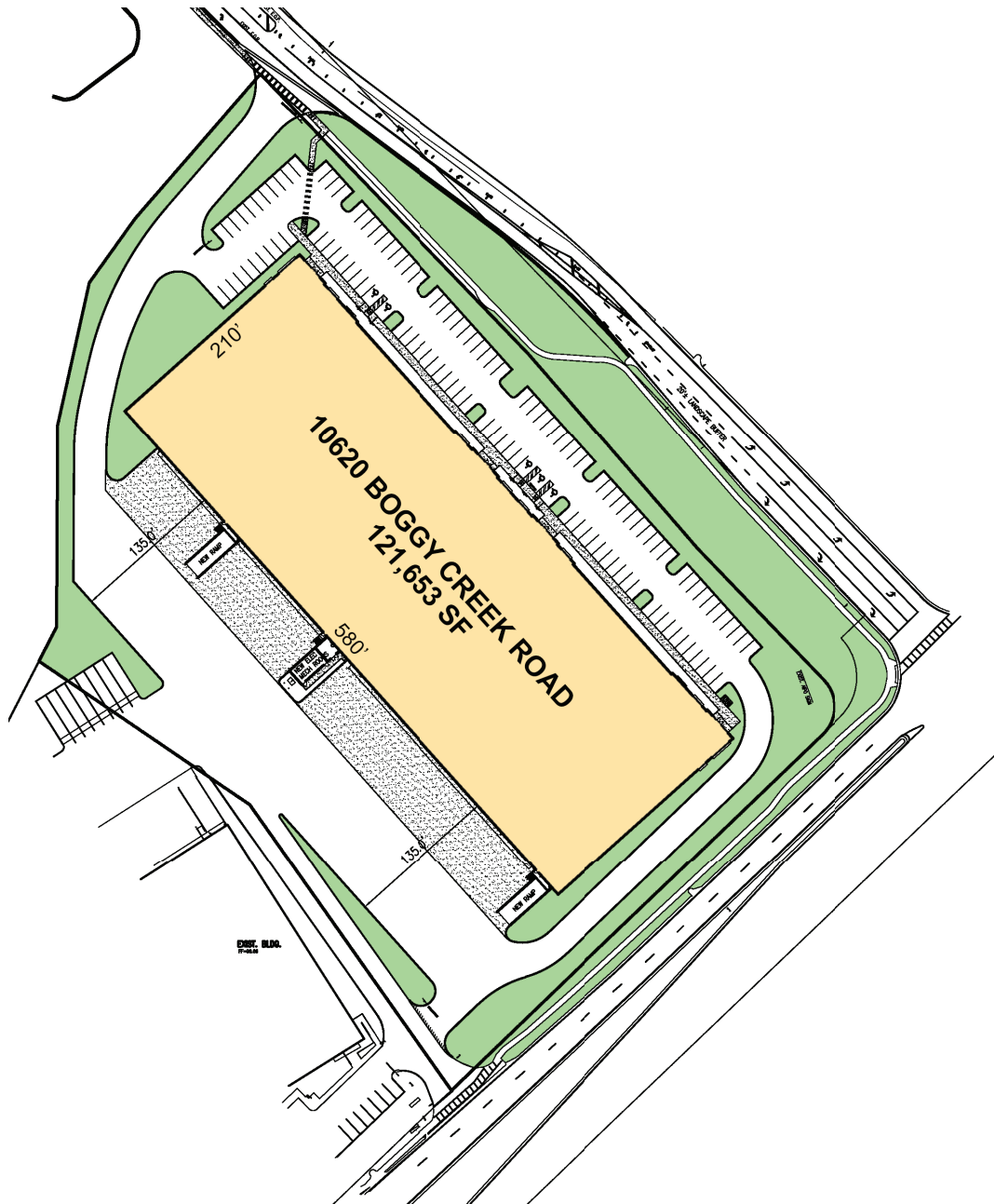
- South of the Beachline Expressway (SR 528) and adjacent to Orlando International Airport.
- Excellent access to Sand Lake Road, S. Orange Avenue, Orange Blossom Trail (US 441) and Central Florida GreenWay (SR 417).
- Access to Port Tampa Bay via Interstate 4 (I-4).

## Property Features

Available Space	121,653 SF
Office SF	2,556 SF
Clear Height	36'
Column Spacing	54' x 54'
Speed Bay	60'
Dock Doors	32
Drive-in Doors	2
Truck Court	135'
Car Parking Spaces	126
Lighting	LED
Sprinkler System	ESFR

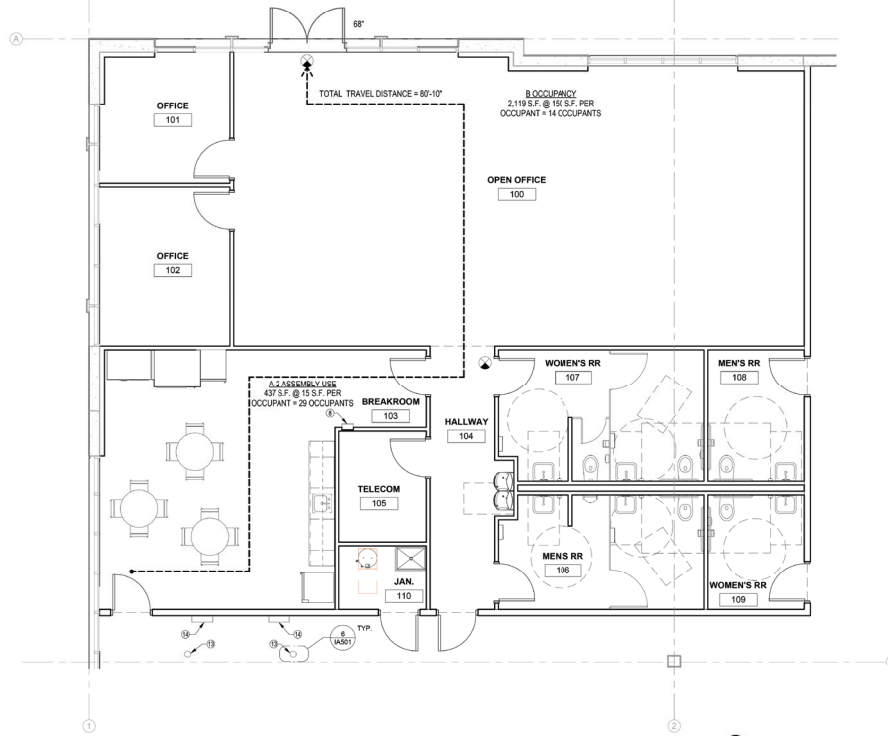


Unlock the full potential of your warehouse with one strategic, single-source partner.



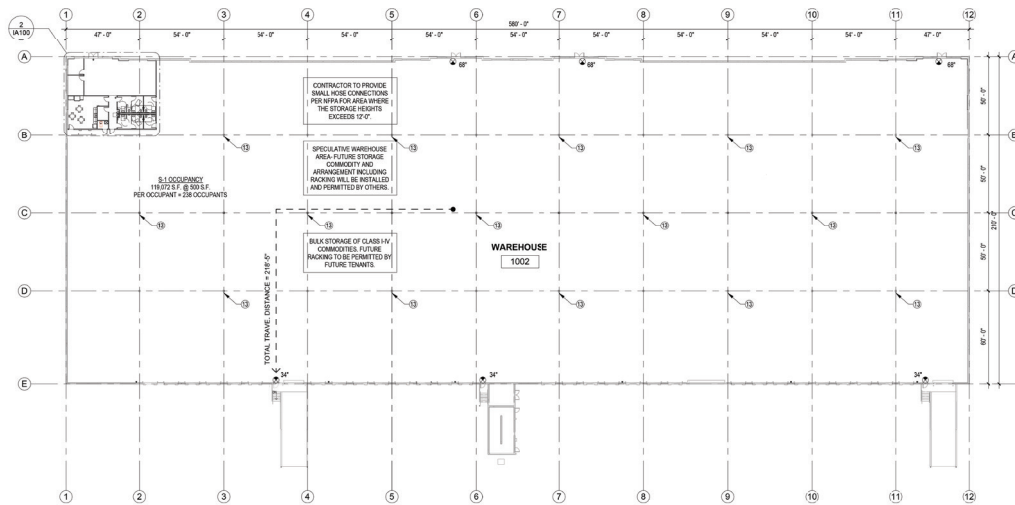
**AIPO**  
Paul Sabga  
psabga@aipo.net  
ph +1 407 927 3981

**Prologis**  
John Kruszewski  
jkruszewski@prologis.com  
ph +1 407 244 7109



**2 ENLARGED OFFICE LIFE SAFETY PLAN**

SCALE: 1/4" = 1'-0"



**1 OVERALL FLOOR AND LIFE SAFETY PLAN**

SCALE: 1/32" = 1'-0"



136 WEST CENTRAL BLVD SUITE 40  
ORLANDO, FLORIDA 32801  
TEL: 407.363.6136  
AA26001097



**Revision Record**

Revision Number	Revision Description	Revision Date

**SPEC SPACE SUITE 100**

ORLANDO, FLORIDA 32824



Prologis Regional Office  
300 S ORANGE AVE.  
ORLANDO, FL, 32801  
407.548.292  
<https://www.prologis.com/>

Date: 11/12/24  
Project No.: 24459

Sheet Title: LIFE SAFETY PLAN

Sheet No.: IA100

Released for Construction  
Not Released for Construction