

# 35,744 SF

## Industrial & Office Space For Lease



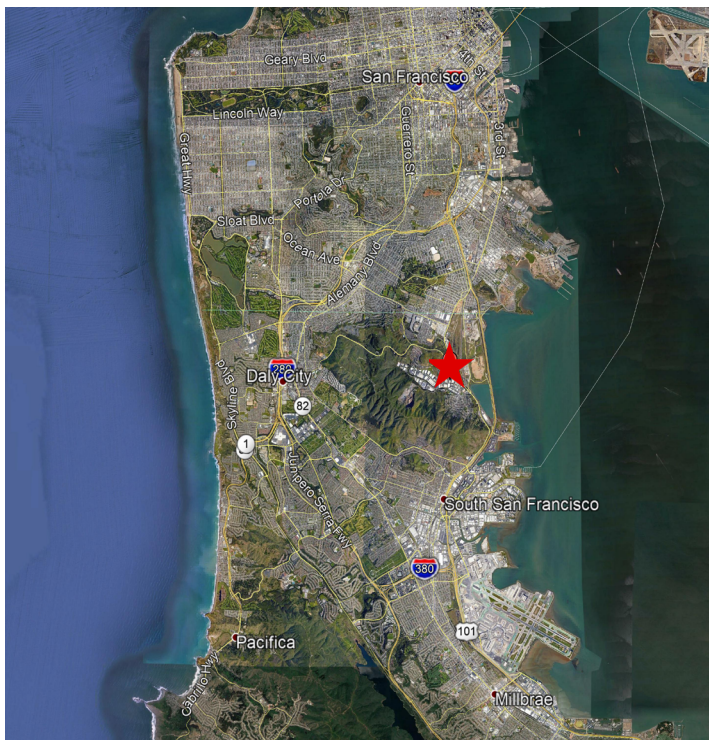
**FREIGHT FORWARDING DESIGNATION**



**360°**  
**Click here for Virtual Tour**

### Prologis SFO

50 Cypress Lane  
Brisbane, CA 94005



### PROPERTY HIGHLIGHTS

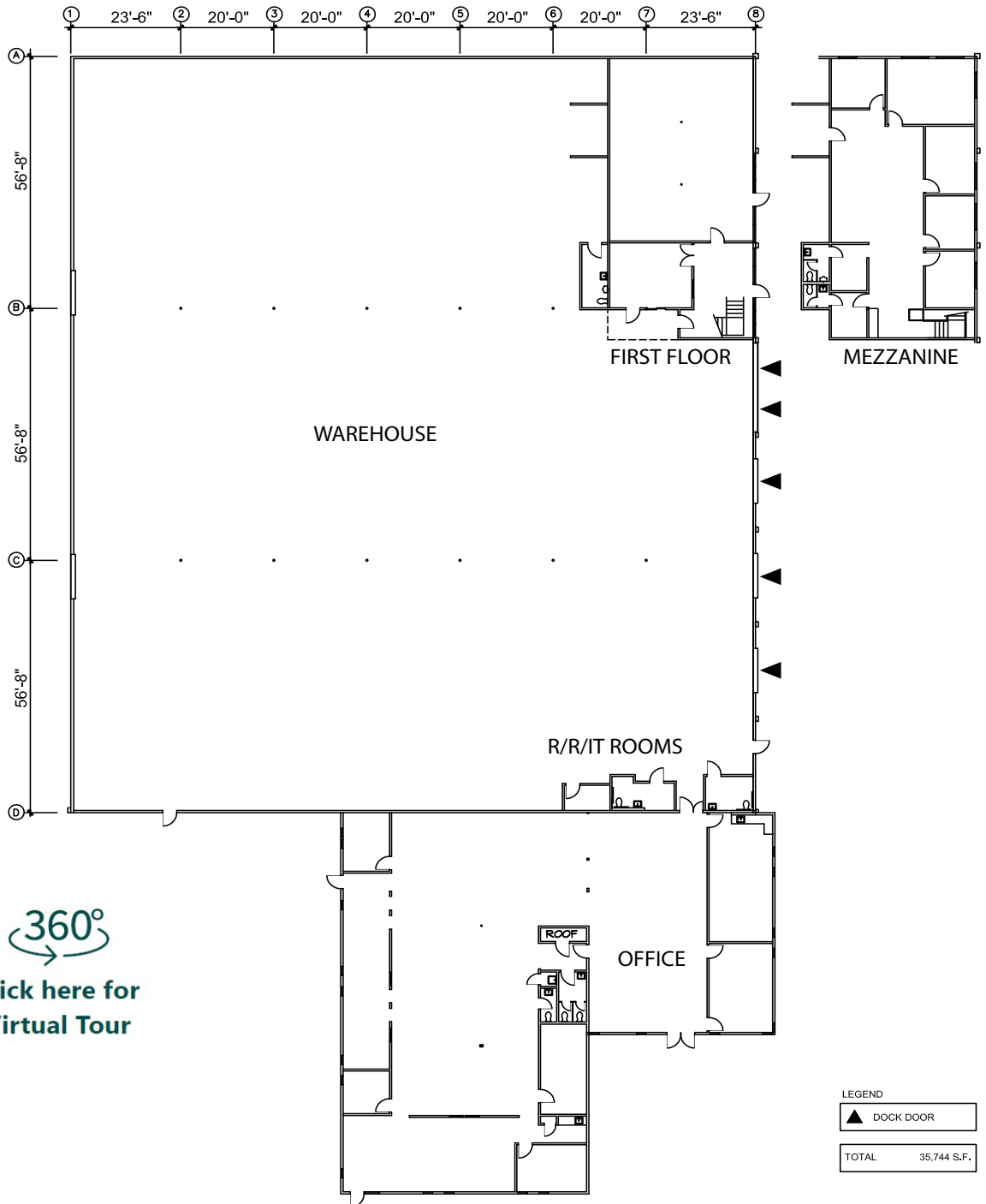
- 35,744 SF Total
- 6,568 SF Main Office
- 4,124 SF Rear Office (2,113 SF 2nd floor)
- Loading: Five (5) Dock-high doors
- Clear Height: 21'
- Power: 800AMPS 120/208V 3 phase 4W
- Parking Ratio: 1.4/1,000
- Freestanding building on 2.03 acres
- Located in Crocker Industrial Park
- Zoning: TC-1 Crocker Park Trade Commercial District, provides for a multitude of permitted uses including but not limited to warehousing, food production, light fabrication, office and R&D/Lab. This building in particular allows for "Freight Forwarding" without the need for a CUP.

# 35,744 SF



## Industrial & Office Space For Lease

### Floor | Site Plan



**JLL**  
**JASON CRANSTON**  
jason.cranston@am.jll.com  
+1 650 480 2100  
CRE #01253892

**JLL**  
**GREG MATTER**  
greg.matter@am.jll.com  
+1 650 480 2220  
CRE #01380731

**JLL**  
**JASON OVADIA**  
jason.ovadia@am.jll.com  
+1 510 285 5360  
CRE #01742912

**JLL**  
**DAVID SESI**  
david.sesi@am.jll.com  
+1 650 480 2136  
CRE #01981744

**Prologis**  
**AMY PALLAS**  
apallas@prologis.com  
+1 510 661 4087  
CRE #00935272

# 35,744 SF

## Industrial & Office Space For Lease



### Site / Aerial View



**JLL**  
**JASON CRANSTON**  
jason.cranston@am.jll.com  
+1 650 480 2100  
CRE #01253892

**JLL**  
**GREG MATTER**  
greg.matter@am.jll.com  
+1 650 480 2220  
CRE #01380731

**JLL**  
**JASON OVADIA**  
jason.ovadia@am.jll.com  
+1 510 285 5360  
CRE #01742912

**JLL**  
**DAVID SESI**  
david.sesi@am.jll.com  
+1 650 480 2136  
CRE #01981744

**Prologis**  
**AMY PALLAS**  
apallas@prologis.com  
+1 510 661 4087  
CRE #00935272

# 35,744 SF

## Industrial & Office Space For Lease



### Interior Photos



**JLL**  
**JASON CRANSTON**  
jason.cranston@am.jll.com  
+1 650 480 2100  
CRE #01253892

**JLL**  
**GREG MATTER**  
greg.matter@am.jll.com  
+1 650 480 2220  
CRE #01380731

**JLL**  
**JASON OVADIA**  
jason.ovadia@am.jll.com  
+1 510 285 5360  
CRE #01742912

**JLL**  
**DAVID SESI**  
david.sesi@am.jll.com  
+1 650 480 2136  
CRE #01981744

**Prologis**  
**AMY PALLAS**  
apallas@prologis.com  
+1 510 661 4087  
CRE #00935272