

# 12,480 SF

Industrial Space For Lease



## Prologis Sky Harbor DC 2



1710 East Grant Street, Suite #170  
Phoenix, AZ 85034 USA



### LOCATION

- Proximity to Phoenix Sky Harbor International Airport
- Less than 1 mile from I-10, I-17 & Loop 202 freeway Interchange
- A-1 Zoning, City of Phoenix
- Ground lease - City of Phoenix

### FACILITY

- ±12,480 SF available
- ±2,640 SF office
- 24' minimum clear height
- 4 dock-high doors
- 3 Pit levelers
- EVAP
- LED motion sensor lighting
- 200 amps, 277/480v, 3 phase power
- Sprinkler density 0.64 GPM / 2,000 SF

### ADVANTAGES AND AMENITIES

- Access to the [Prologis Essentials](https://www.prologis.com/essentials) platform

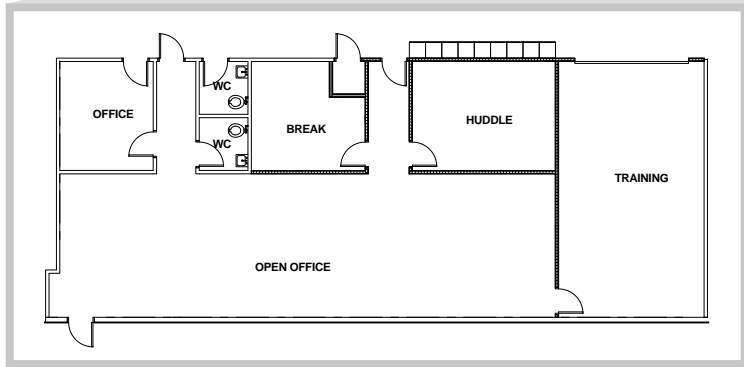
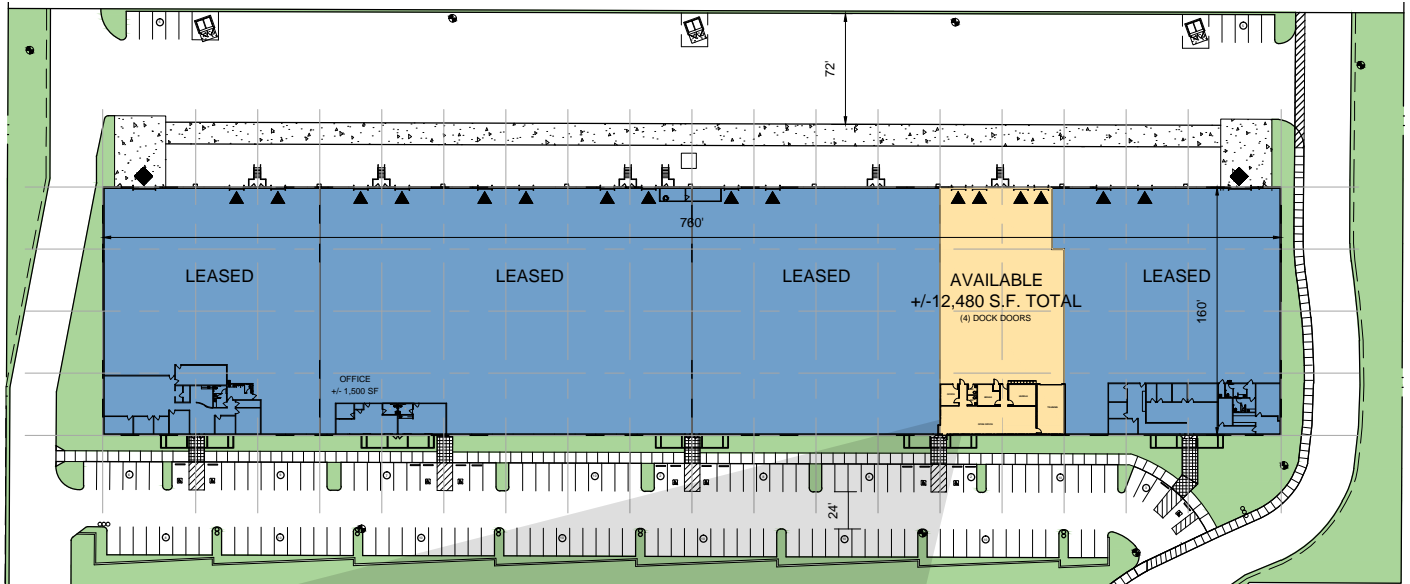
**Prologis Essentials: your single-source service for efficient move-in and operations: [prologisessentials.com](https://www.prologis.com/essentials)**

# 12,480 SF

Industrial Space For Lease



## Prologis Sky Harbor DC 2



▲ Dock Door w/Leveler

◆ Ramp Access



### Lee & Associates

Stein Koss, SIOR  
skoss@leeazizona.com  
ph +1 602 912 3520  
cell +1602 510 1999  
3200 E Camelback Road  
Suite 100  
Phoenix, AZ 85018 USA

### Lee & Associates

Tom Louer, SIOR  
tlouer@leeazizona.com  
ph +1 602 954 3779  
cell +1 602 684 6909  
3200 E Camelback Road  
Suite 100  
Phoenix, AZ 85018 USA

### Prologis

Jeff Foster  
jfoster@prologis.com  
ph +1 602 474 8383  
cell +1 480 280 4919  
2525 E Camelback Road  
Suite 400  
Phoenix, AZ 85016 USA

### Prologis

Alicia Saxby  
asaxby@prologis.com  
ph +1 602 474 8364  
cell +1 602 284 3435  
2525 E Camelback Road  
Suite 400  
Phoenix, AZ 85016 USA

**Prologis Essentials: your single-source service for efficient move-in and operations: [prologisessentials.com](http://prologisessentials.com)**

No warranty or representation, expressed or implied, is made as to the accuracy of the information contained herein, and same is submitted subject to error and omissions.