

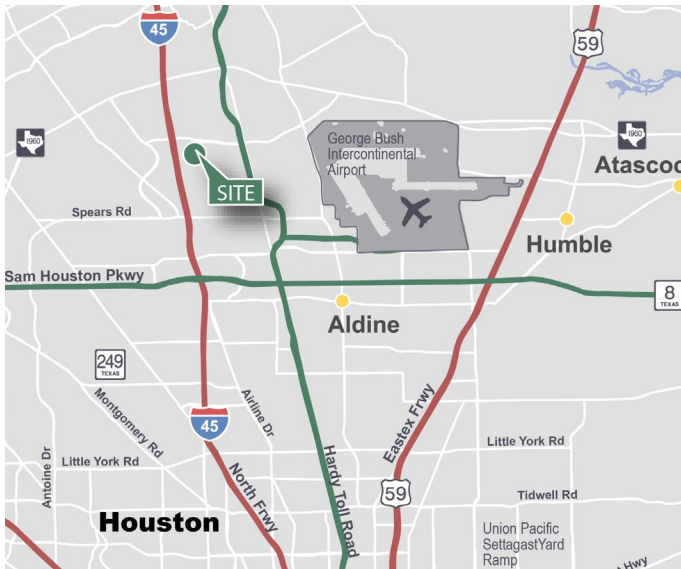
62,252 SF

Industrial Space For Lease



Prologis Northpark 4

600 Northpark Central Drive
Houston, TX 77073 USA



LOCATION

- Conveniently located along I-45 North between Airtex Drive and Richey Road
- Easy access to I-45, Beltway 8 and the Hardy Toll Road
- Part of the master planned Prologis Park Northpark
- Unincorporated Harris County
- Double Freeport tax exemption

FACILITY

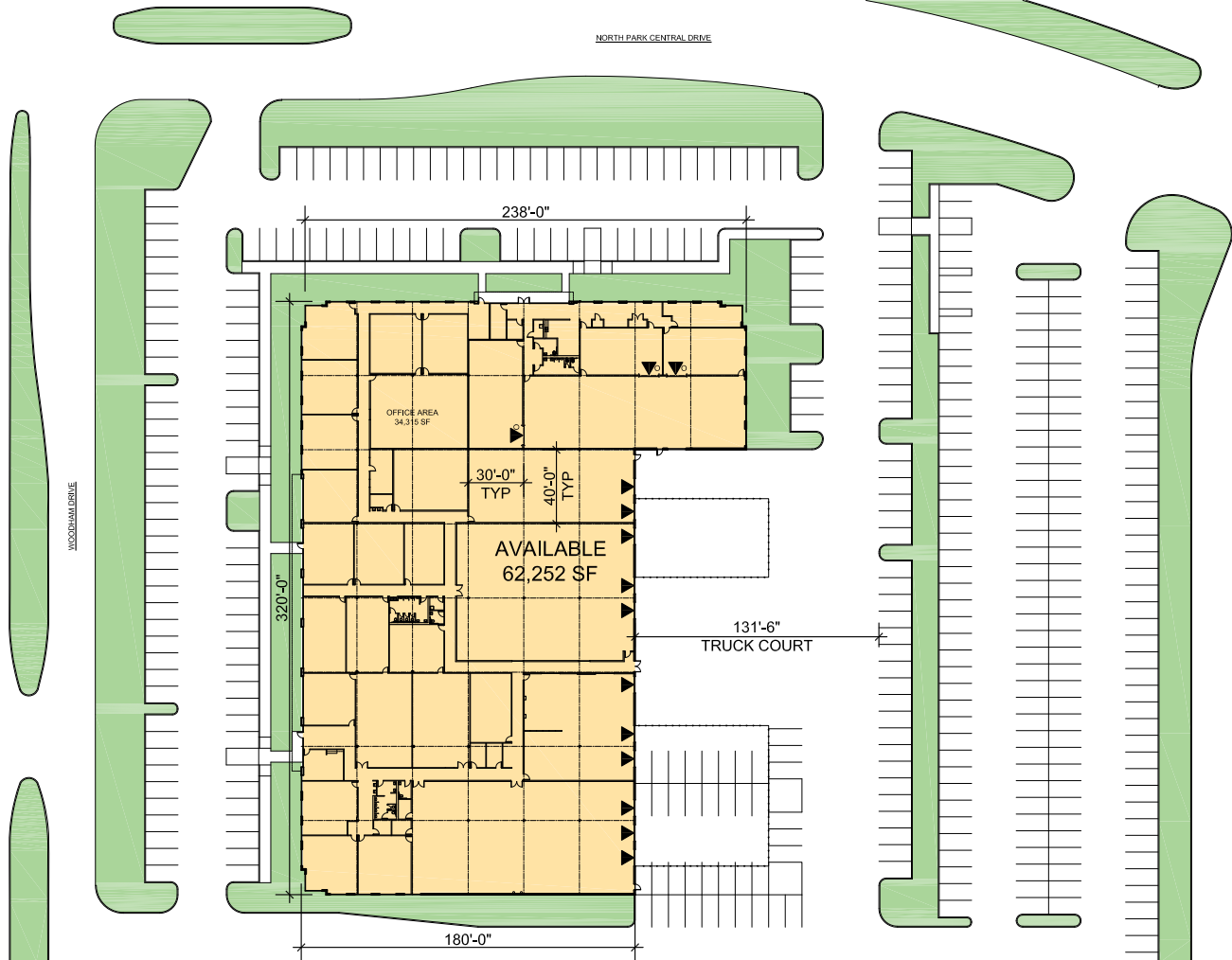
- 62,252 SF available
- Divisible to 11,711 SF, 14,590 SF, and 35,951 SF
- 34,315 SF of office
- 18' clear height
- 11 dock-high doors / 3 ramps
- 30' x 40' column spacing

ADVANTAGES AND AMENITIES

- Sprinklered
- HVAC warehouse
- Former Mercedes Benz advanced training facility

62,252 SF

Industrial Space For Lease



CBRE

CBRE
Jason Dillee
Jason.Dillee@cbre.com
ph +1 713 577 1796
cell +1 832 741 0733
2800 Post Oak Blvd., Suite 500
Houston, TX 77056 USA

CBRE
Nathan Wynne
Nathan.Wynne@cbre.com
ph +1 713 577 1724
cell +1 713 206 3881
2800 Post Oak Blvd., Suite 500
Houston, TX 77056 USA

Prologis
Alicia Pillows
anye@prologis.com
ph +1 713 613 6930
cell +1 713 409 1306
1296 North Post Oak Road
Houston, TX 77055 USA