

Prologis Park Commodore North

Logan Township, New Jersey



World-Class, Multi-Purpose Business Park

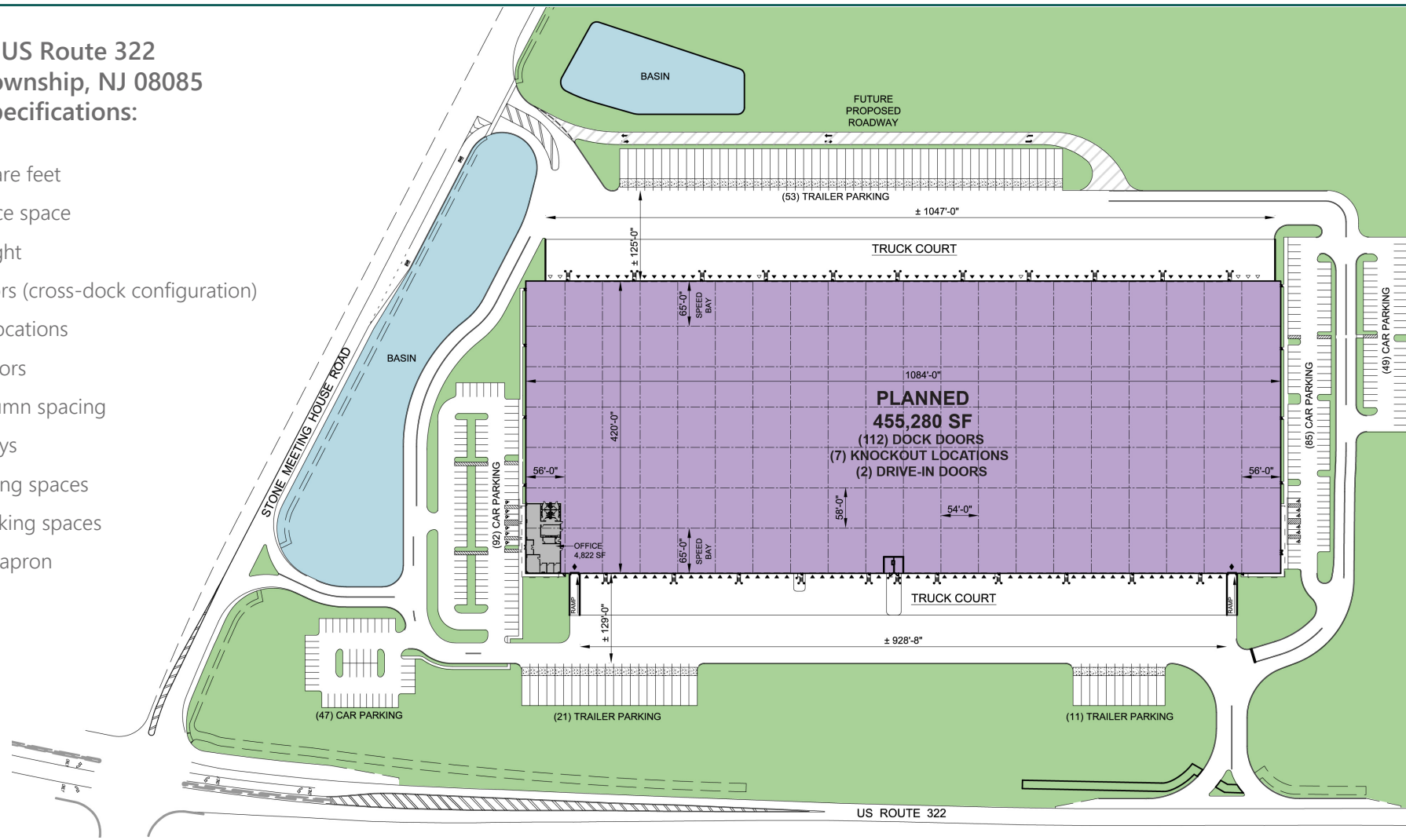


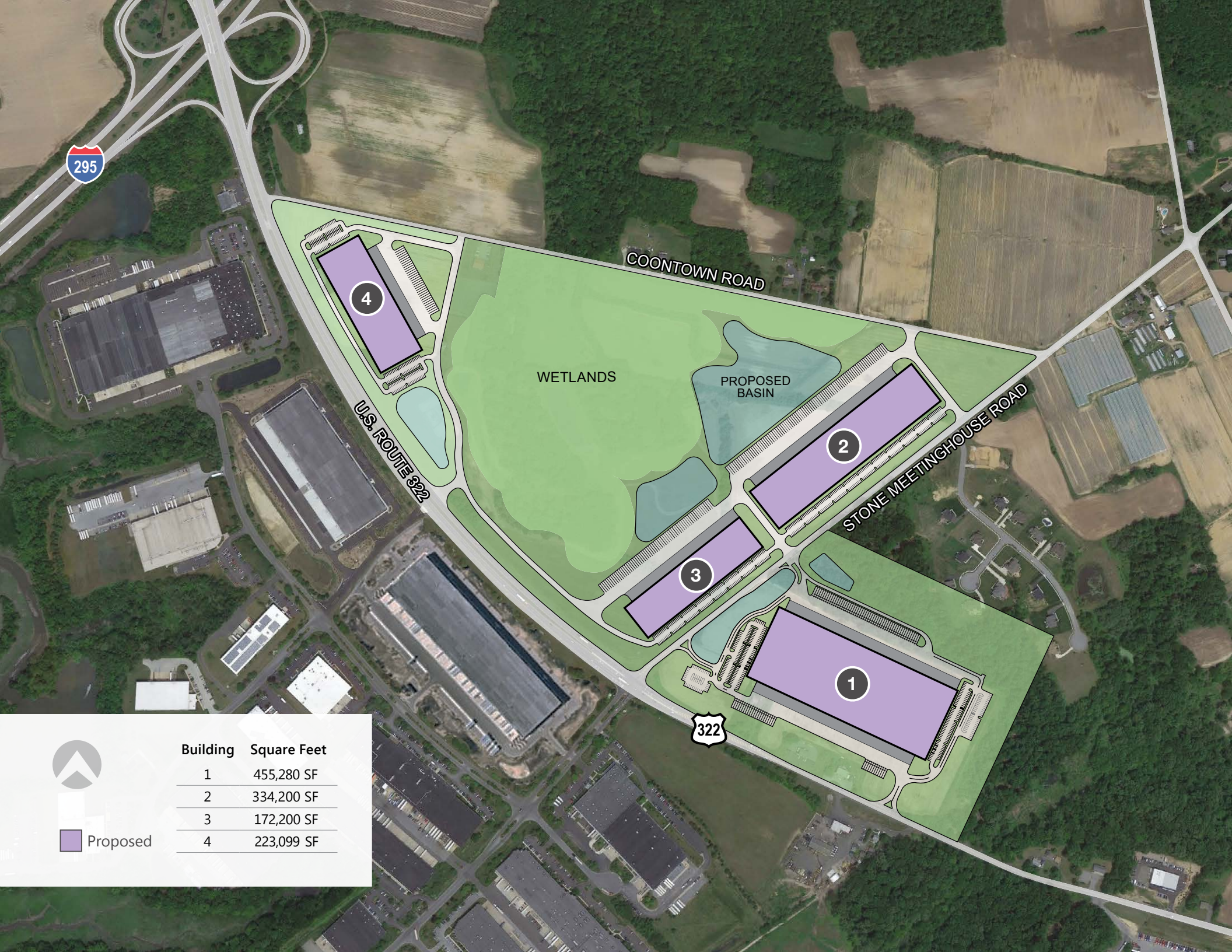
Prologis Park Commodore North

- Prime location at I-295 interchange (Exit 11) and quick access to New Jersey Turnpike (Exit 2) and I-95
- Direct access to Commodore Barry Bridge via Route 322
- ±25 miles from Center City Philadelphia and Port of Philadelphia
- Close proximity to the workforce in southern New Jersey, northern Delaware and eastern Pennsylvania
- Reachable to 25% of US population in one day's drive
- Over 63 acres of land available for development with four buildings planned

2221 & 2279 US Route 322 Woolwich Township, NJ 08085 Building 1 specifications:

- 455,280 square feet
- 4,822 SF office space
- 40' clear height
- 112 dock doors (cross-dock configuration)
- 7 knockout locations
- 2 drive-in doors
- 54' x 58' column spacing
- 65' speed bays
- 273 car parking spaces
- 85 trailer parking spaces
- 60' concrete apron





295

COONTOWN ROAD

U.S. ROUTE 322

STONE MEETINGHOUSE ROAD

322

WETLANDS

PROPOSED BASIN



Proposed

Building	Square Feet
1	455,280 SF
2	334,200 SF
3	172,200 SF
4	223,099 SF



Executive Managing Director
ph +1 732 590 4184
cell +1 609 672 3163
nate.demetsky@am.jll.com

Managing Director
ph +1 856 324 5312
cell +1 609 472 4953
dean.torosian@am.jll.com



One Meadowlands Plaza
Suite 100
East Rutherford, NJ 07073
Main: +1 201 635 6000

Pier 1, Bay 1
San Francisco, CA 94111
Main: +1 415 394 9000
info@prologis.com

VP, Leasing Officer
prosen@prologis.com
ph +1 201 635 6013
cell +1 201 306 1332

www.prologis.com
NYSE: PLD
Twitter: @Prologis

Prologis is the leading owner, operator and developer of industrial logistics real estate with approximately 965 million square feet (90 million square meters) owned and under management in 19 countries on four continents.

Data as of March 31, 2020, for assets the company owned or had investments in, on a wholly owned basis or through co-investment ventures, properties and development projects.

PLD_PPCCNB_0520