

±176,904 SF

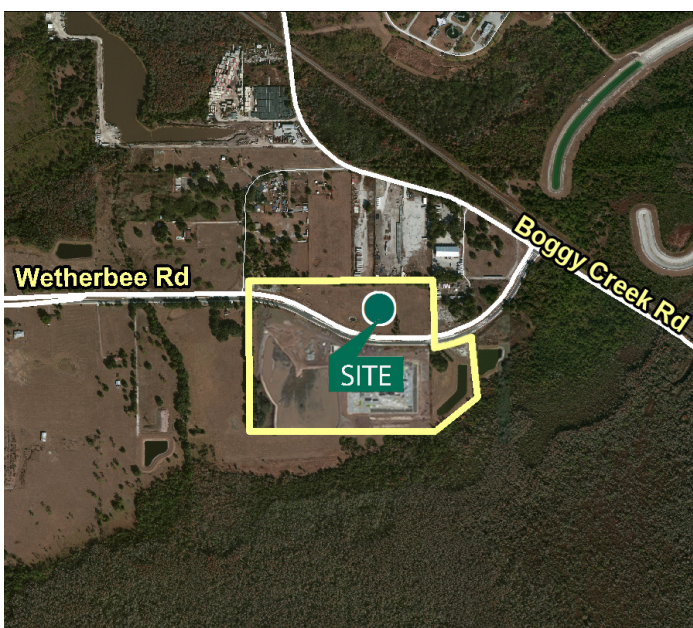


Industrial BTS For Lease / Sale - Can Be Subdivided



Prologis Airport Park

E. Wetherbee Road - North
Orlando, FL 32824 USA



LOCATION

- Three miles to SR 417
- Five miles to the Beachline Expressway (SR 528)
- Six miles to Orlando International Airport and Orange Blossom Trail (US 441)
- Eight miles to Florida's Turnpike
- 19 miles to Interstate 4

PROPERTY HIGHLIGHTS

- ±60 acre master planned industrial park
- Entitled for up to 1.24M SF
- Class A, concrete tilt-wall, industrial distribution facility
- Outparcels are planned development with approved retail outparcel uses, Orange County, FL
- Power, water and sanitary service provided by OUC

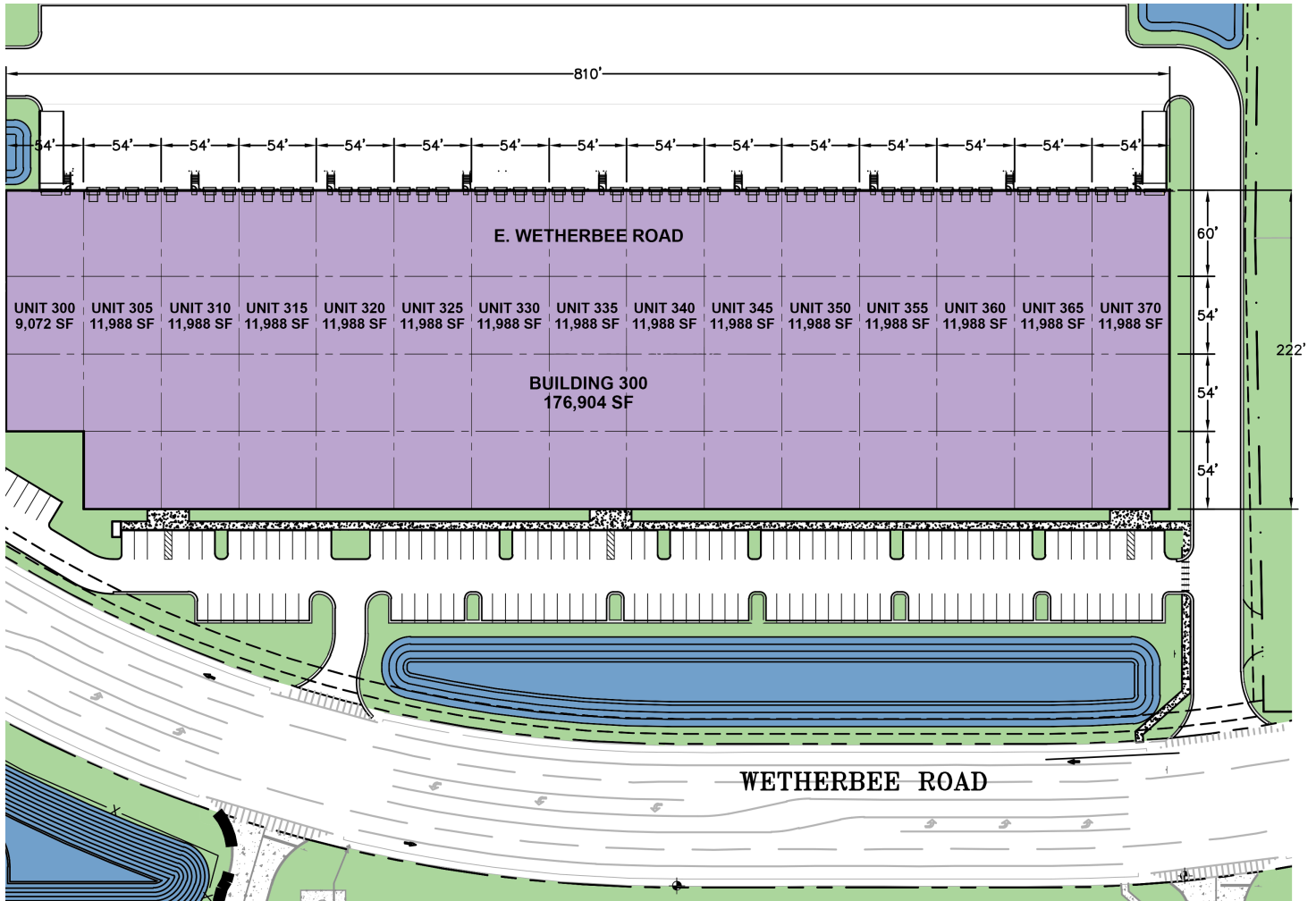
PARCEL/BUILDING 300 INFORMATION

- ±14.26 acres of land available (North of E. Wetherbee Road)
- Rental/sale price is negotiable
- Rear load capability
- Three-phase electric and low voltage power available
- ESFR sprinkler system
- ±12 months building delivery from fully executed lease

±176,904 SF



Industrial BTS For Lease / Sale - Can Be Subdivided



Building 300 - Build-To-Suit For Lease or For Sale

- ±176,904 SF - Can be subdivided
- Rear load
- 32' clear height
- 222' building depth
- 46 dock doors
- Two drive-in doors
- 130' truck court
- 210 auto spaces
- 31 trailer spaces

[Video Overview - Click Here](#)

This project is registered with the U.S. Green Building Council and will pursue certification under USGBC's LEED (Leadership in Energy and Environmental Design) program. "LEED®" and the related logo is a trademark owned by the U.S. Green Building Council and is used with permission.



CBRE, Inc.,
Licensed Real Estate Broker

CBRE, Inc.

David Murphy, MAI, SIOR, CCIM
david.murphy@cbre.com
+1 407.404.5020 phone
200 S. Orange Avenue, Suite 2100
Orlando, FL 32801 USA

CBRE, Inc.

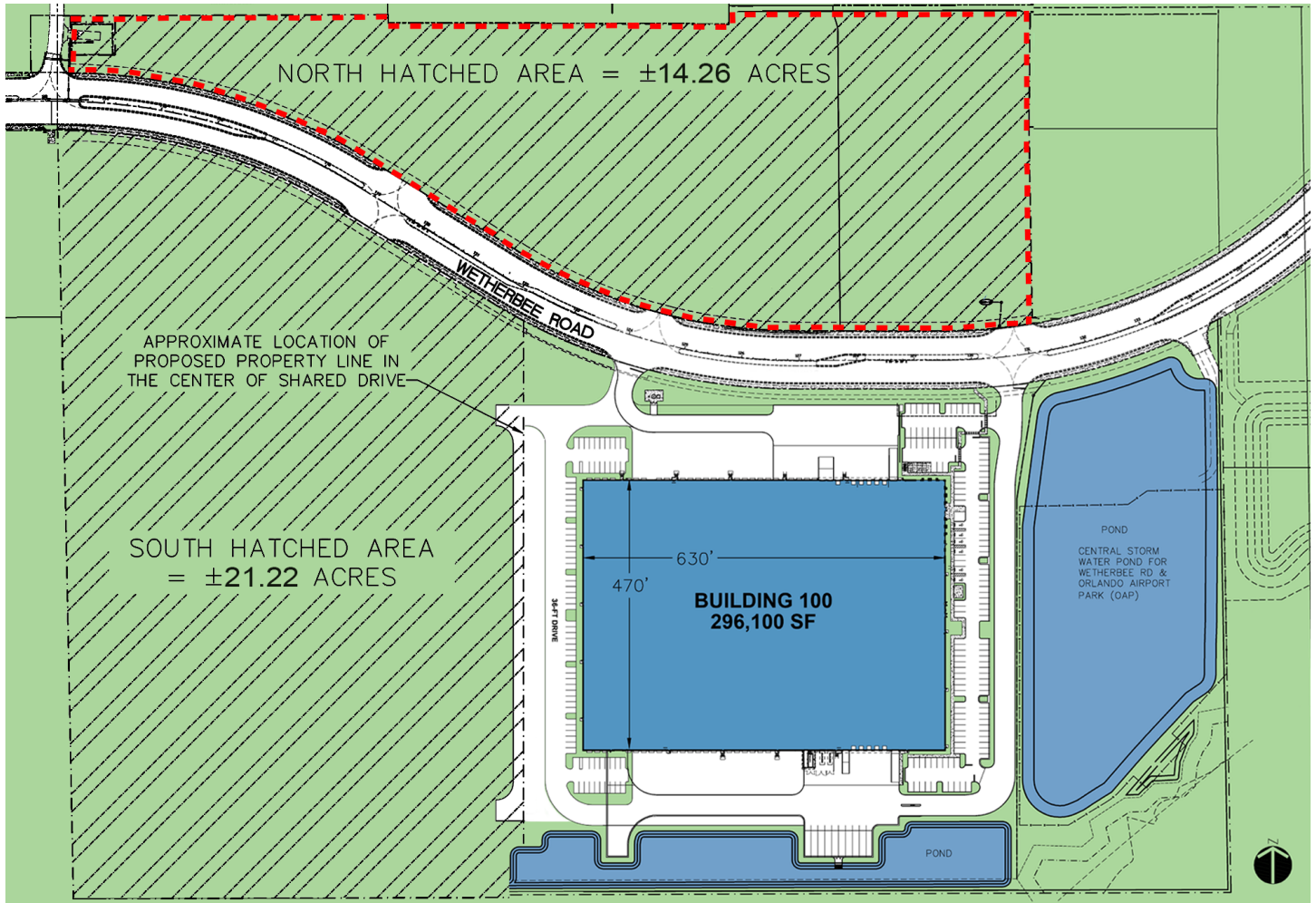
Monica Perez Wonus, CCIM
monica.wonus@cbre.com
+1 407.404.5042 phone
200 S. Orange Avenue, Suite 2100
Orlando, FL 32801 USA

No warranty or representation, expressed or implied, is made as to the accuracy of the information contained herein, and same is submitted subject to error and omissions.

www.prologis.com

±14.26 Net Acres

For Build-To-Suit



CBRE, Inc.,
Licensed Real Estate Broker

CBRE, Inc.

David Murphy, MAI, SIOR, CCIM
david.murphy@cbre.com
+1 407.404.5020 phone
200 S. Orange Avenue, Suite 2100
Orlando, FL 32801 USA

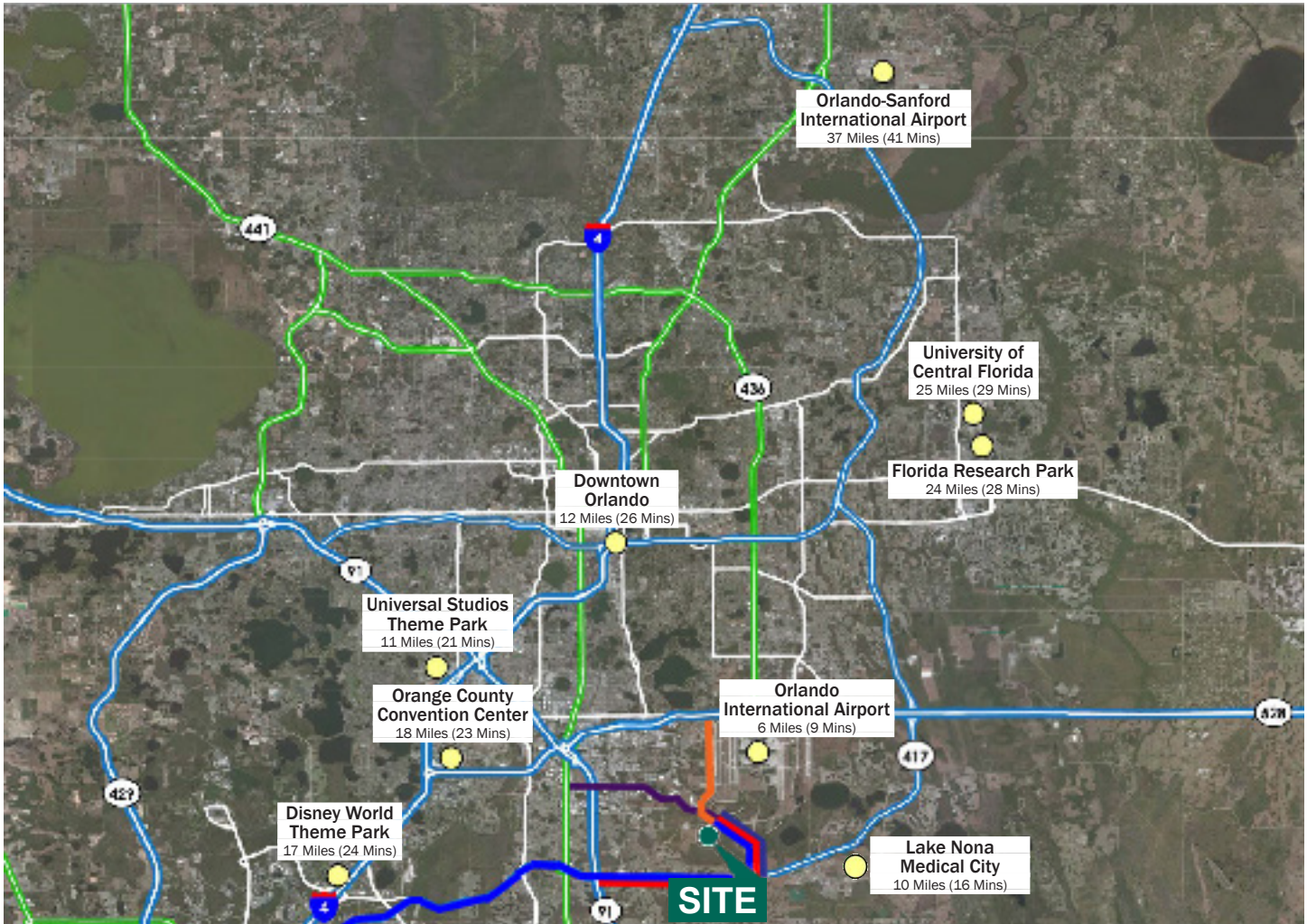
CBRE, Inc.

Monica Perez Wonus, CCIM
monica.wonus@cbre.com
+1 407.404.5042 phone
200 S. Orange Avenue, Suite 2100
Orlando, FL 32801 USA

±176,904 SF



Industrial BTS For Lease / Sale - Can Be Subdivided



- Three miles to Florida SR 417
- Five miles to the Beachline Expressway (SR 528)
- Six miles to Orange Blossom Trail (US 441)
- Eight miles to Florida's Turnpike
- 19 miles to Interstate 4 (I-4)



CBRE, Inc.,
Licensed Real Estate Broker

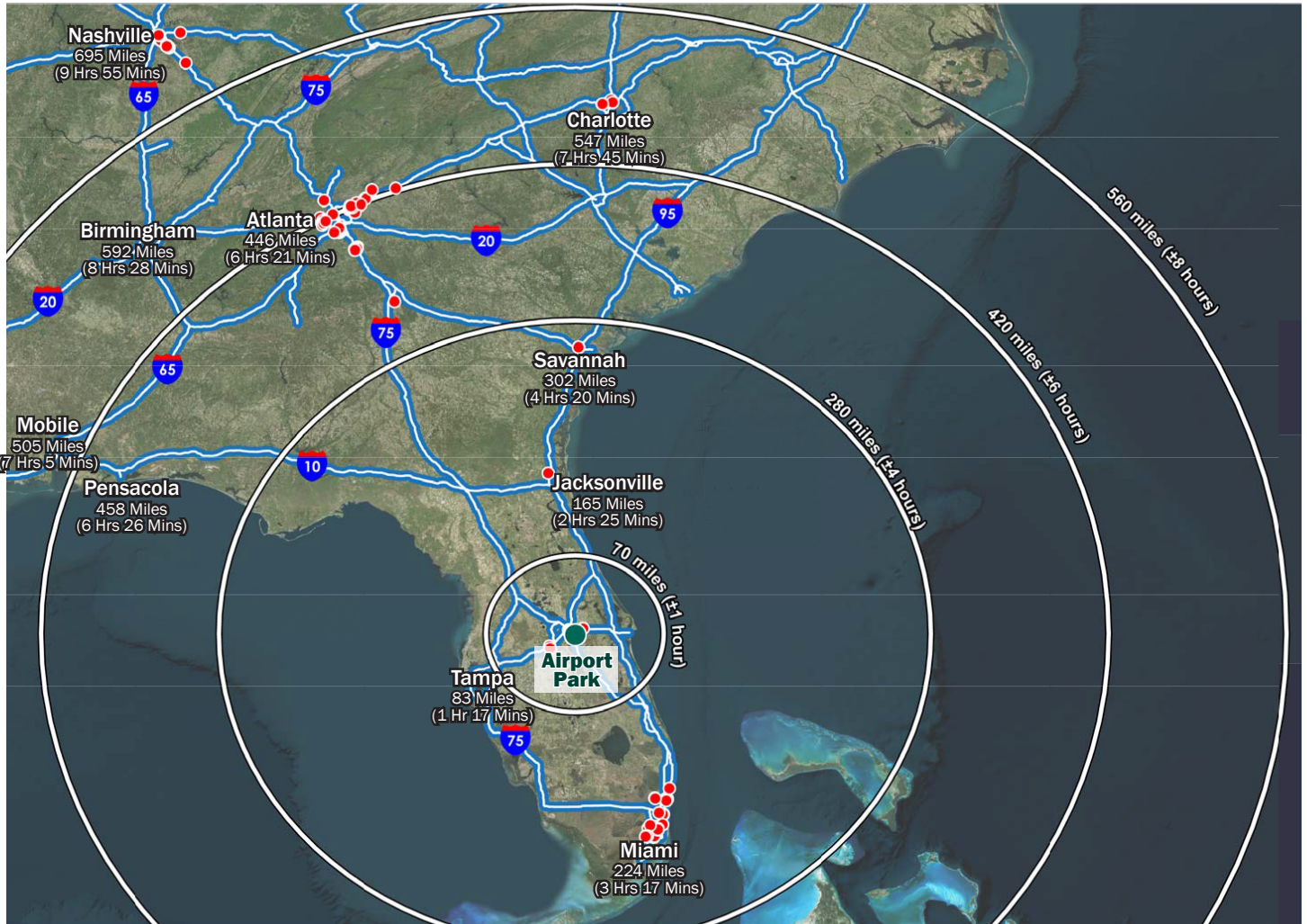
CBRE, Inc.
David Murphy, MAI, SIOR, CCIM
david.murphy@cbre.com
+1 407.404.5020 phone
200 S. Orange Avenue, Suite 2100
Orlando, FL 32801 USA

CBRE, Inc.
Monica Perez Wonus, CCIM
monica.wonus@cbre.com
+1 407.404.5042 phone
200 S. Orange Avenue, Suite 2100
Orlando, FL 32801 USA

±176,904 SF



Industrial BTS For Lease / Sale - Can Be Subdivided



● Prologis Assets



CBRE, Inc.,
Licensed Real Estate Broker

CBRE, Inc.

David Murphy, MAI, SIOR, CCIM
david.murphy@cbre.com
+1 407.404.5020 phone
200 S. Orange Avenue, Suite 2100
Orlando, FL 32801 USA

CBRE, Inc.

Monica Perez Wonus, CCIM
monica.wonus@cbre.com
+1 407.404.5042 phone
200 S. Orange Avenue, Suite 2100
Orlando, FL 32801 USA