

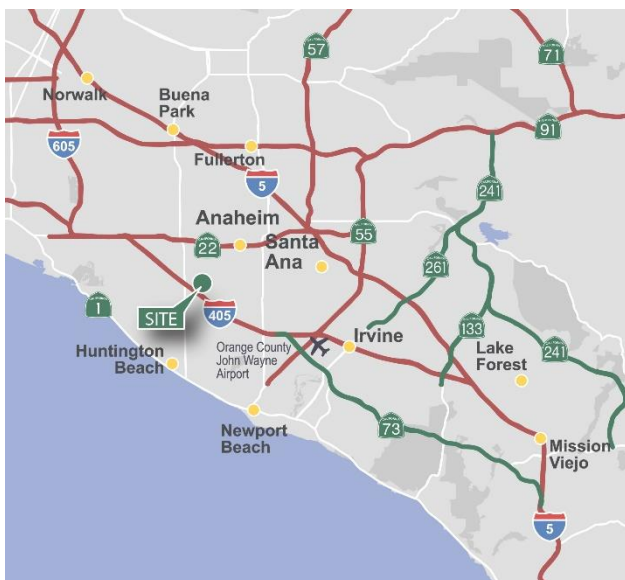
±33,106 SF

Industrial Building For Lease



Prologis West Orange County Business Center

7130 Fenwick Lane
Westminster, CA 92683



LOCATION

- Immediate access to the 405 Freeway
- Strategic West Orange County location with skilled and diversified work force

FACILITY

- 33,106 square foot building
- 5,285 square feet of office space
- 6 ground-level loading doors
- 18' clear height
- 1,000 Amps, 220/480 volts (to be verified)
- Fire sprinklers
- ±48 parking spaces
- Shared secured and fenced yard area
- Major renovations planned

ADVANTAGES AND AMENITIES

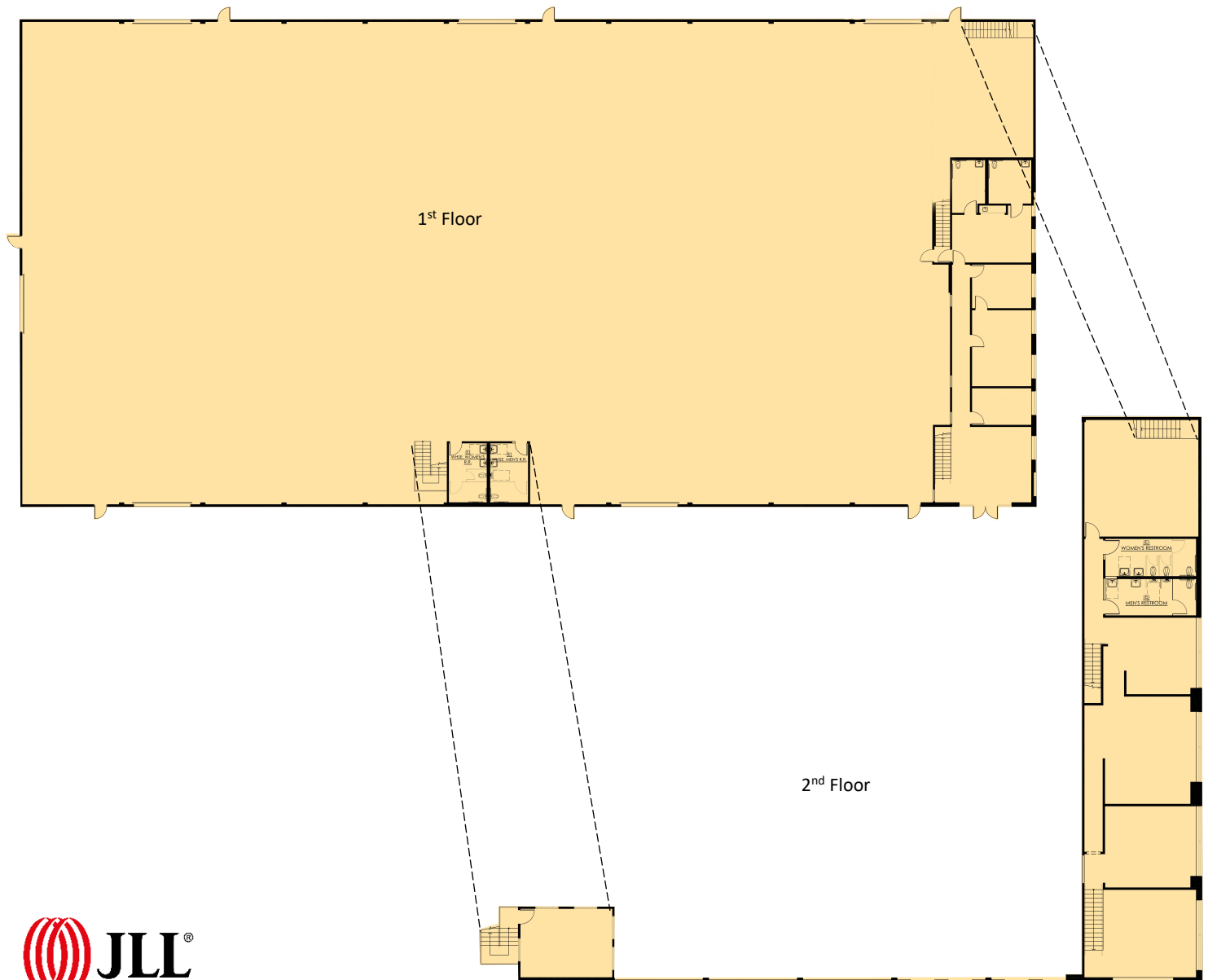
- Close to retail/dining amenities at the Westminster Mall and Bella Terra
- Part of a larger 264,847 s.f. professionally managed business park

±33,106 SF

Industrial Building For Lease



FLOOR PLAN (AFTER PLANNED RENOVATIONS)



Steve Wagner

License #01314652
steve.wagner@am.jll.com
+1 949 885 2923
17877 Von Karman Ave.
Suite 500
Irvine, CA 92614
www.jll.com

Louis Tomaselli

License #00904844
louis.tomaselli@am.jll.com
+1 949 885 2985
17877 Von Karman Ave.
Suite 500
Irvine, CA 92614
www.jll.com

Zach Niles

License #01311756
zach.niles@am.jll.com
+1 949 885 2922
4 17877 Von Karman Ave.
Suite 500
Irvine, CA 92614
www.jll.com

Parker Hutchison

License #01875578
phutchison@prologis.com
+1 562 345 9209
17777 Center Court Dr N
Suite 100
Cerritos, CA 90703
www.prologis.com