

# ± 30,000 SF

Industrial Space For Lease



## Prologis Park Kingsport



7925 South 196<sup>th</sup> Street  
Kent, WA 98032 USA

### LOCATION

- Excellent North Kent Valley Location
- Quick Access to SR-167 and I-5
- Prominent frontage on 196<sup>th</sup> St.

### FACILITY

- ± 30,000 SF
- ± 3,093 SF office
- ± 1,334 SF mezzanine
- ± 1,110 SF storage mezzanine
- ± 20' clear height
- 9 dock-high doors and 1 drive-in door
- ± 50' x 25' typical column spacing
- Available 3/1/2024

### ADVANTAGES AND AMENITIES

- Access to the Prologis Essentials platform, which includes:

[Operations Essentials](#)

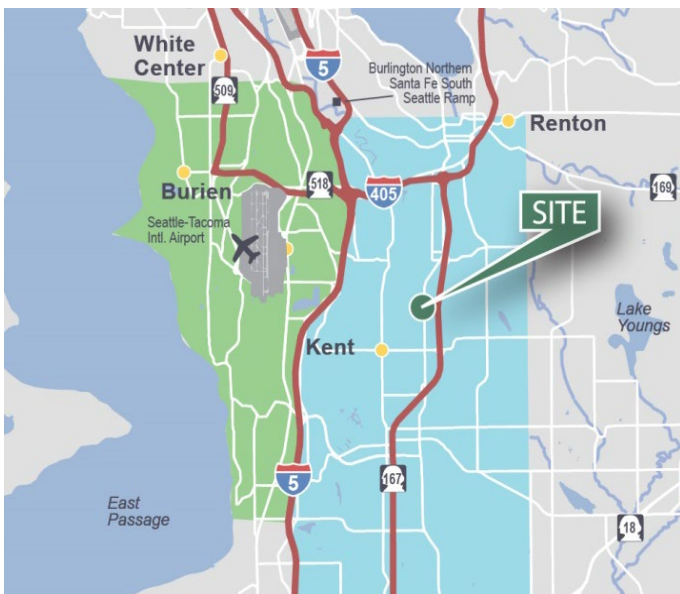
[Energy Essentials](#)

[Workforce Essentials](#)

[Mobility Essentials](#)

[Digital Essentials](#)

**Your single-source service for efficient move-in and operations: [prologisessentials.com](https://www.prologisessentials.com)**

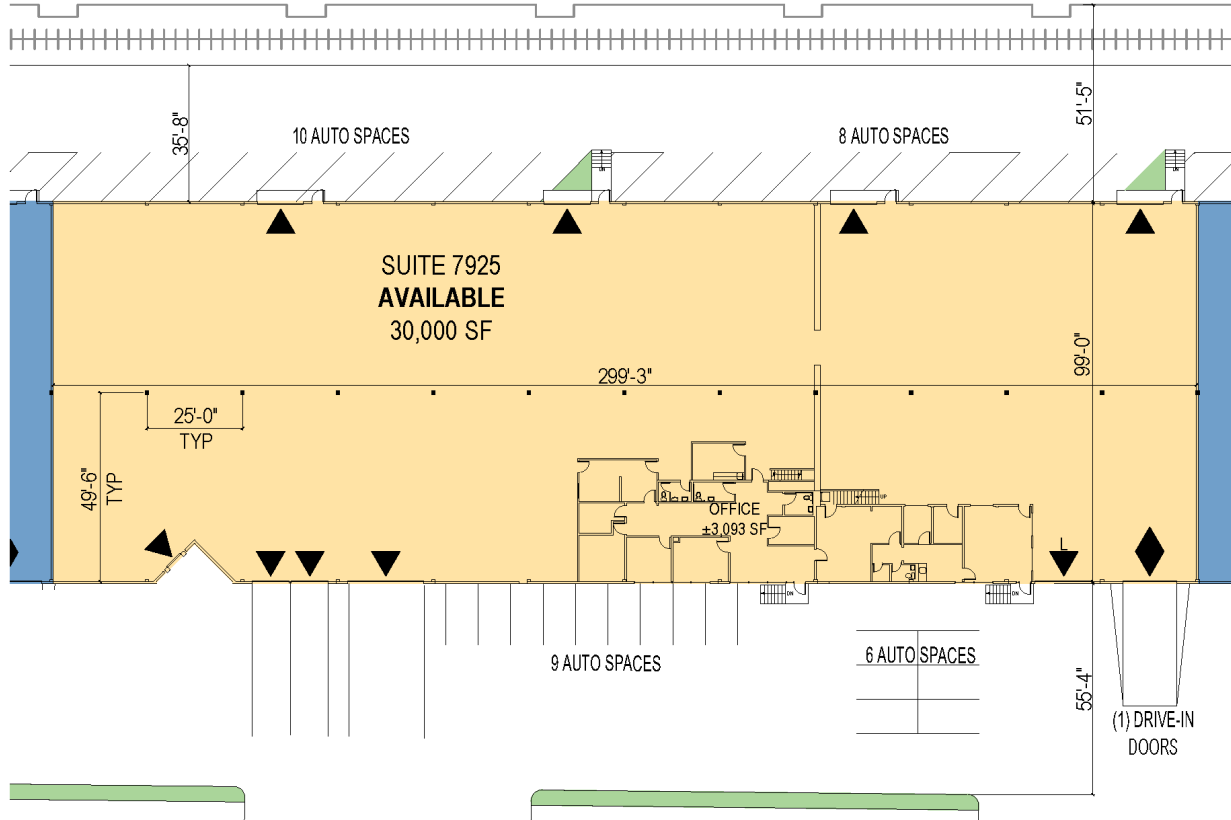


# ± 30,000 SF

## Industrial Space For Lease

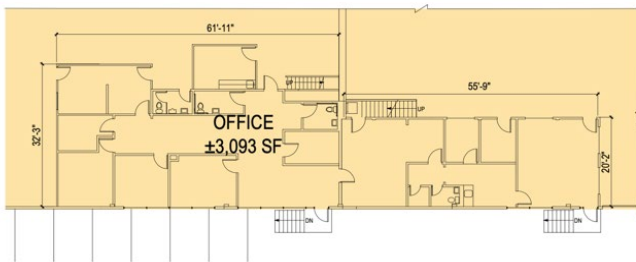


# Prologis Park Kingsport

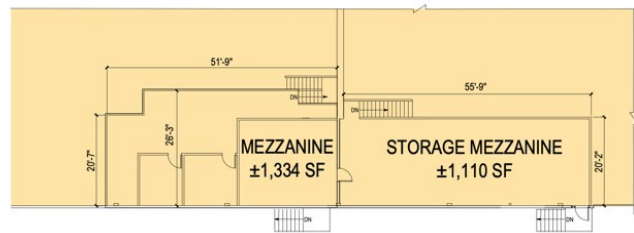


SUITE 7925 PLAN

N.T.S.



OFFICE PLAN



MEZZANINE PLAN



### WA-REA

Wilma Warshak, SIOR  
wilma.warshak@wa-rea.com  
ph +1 206 838 5492  
cell +1 206 409 1432  
2371 Eastlake Ave. East  
Suite 200  
Seattle, WA 98102 USA

### WA-REA

Alana Garrett  
alana.garrett@wa-rea.com  
ph +1 206 838 5492  
cell +1 858 722 5627  
2371 Eastlake Ave. East  
Suite 200  
Seattle, WA 98102 USA

### WA-REA

Jackson Peterson  
jackson.peterson@wa-rea.com  
ph +1 206 838 5492  
cell +1 503 739 1830  
2371 Eastlake Ave. East  
Suite 200  
Seattle, WA 98102 USA

### Prologis

Lucca Merlino  
Lmerlino@prologis.com  
ph +1 206 414 7621  
cell +1 206 498 6511  
5900 Airport Way South  
Suite 300  
Seattle, WA 98108 USA