

16,058 SF

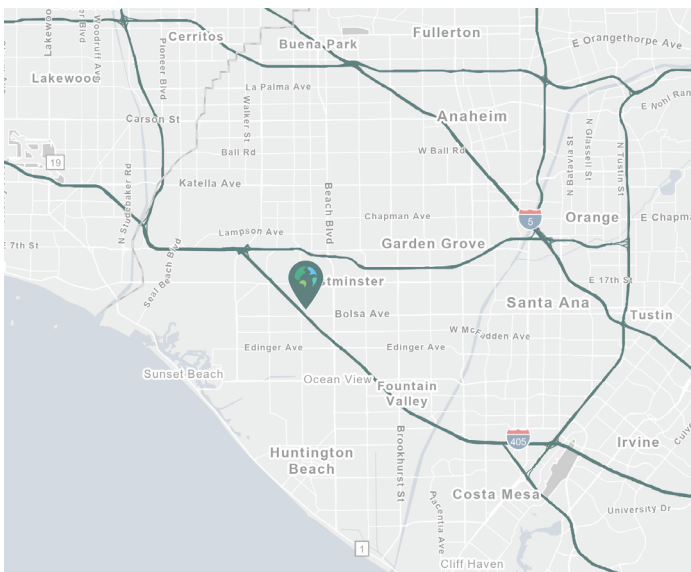
Industrial Space For Lease



Prologis West Orange County Business Center



7171 Fenwick Lane
Westminster, CA 92683



Your single-source service for efficient move-in and operations:
[prologisessentials.com](https://www.prologisessentials.com)

LOCATION

- Immediate access to the 405 Freeway
- Strategic West Orange County location with skilled and diversified work force
- Close to retail/dining amenities at the Westminster Mall and Bella Terra
- Part of a larger 265,678 s.f. professionally managed business park

FACILITY

- ±16,058 square foot building (divisible)
- ±11,074 square feet of warehouse space
- ±4,984 square feet of single-story office space
- 4 ground-level loading door
- 18' warehouse clearance
- 800 Amps, 120/208 volts (to be verified)
- Fire sprinklers
- ±2.1 parking spaces per 1,000 s.f.
- Shared/fenced yard area

ADVANTAGES AND AMENITIES

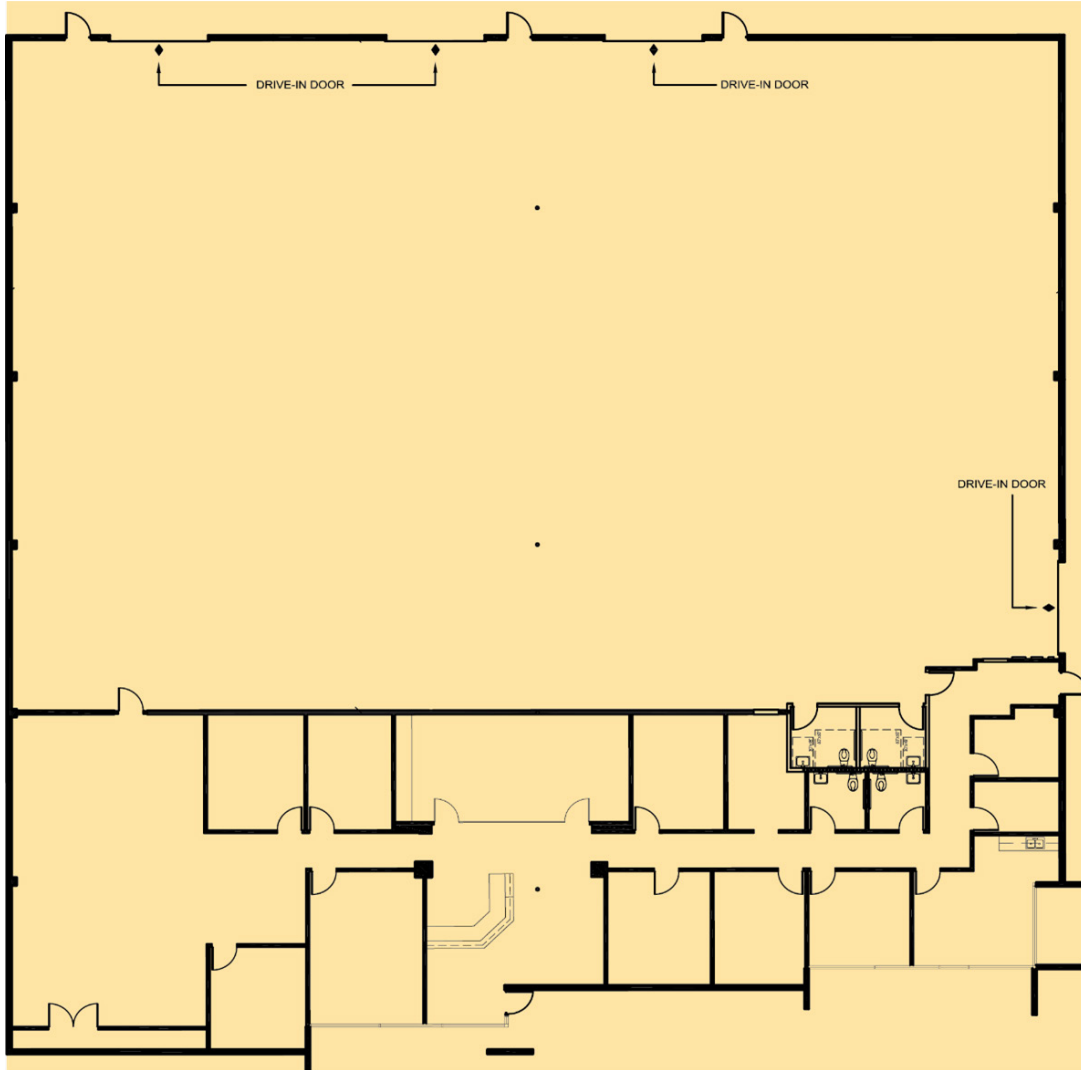
- Access to the Prologis Essentials platform, which includes:
 - [Operations Essentials](#)
 - [Energy Essentials](#)
 - [Workforce Essentials](#)
 - [Mobility Essentials](#)
 - [Digital Essentials](#)

16,058 SF

Industrial Space For Lease



Prologis West Orange County Business Center



JLL

Steve Wagner
License #01314652
steve.wagner@jll.com
+1 949 885 2923
17877 Von Karman Ave.,
Suite 500
Irvine, CA 92614
www.jll.com

JLL

Louis Tomaselli
License #00904844
louis.tomaselli@jll.com
+1 949 885 2985
17877 Von Karman Ave.,
Suite 500
Irvine, CA 92614
www.jll.com

JLL

Zach Niles
License #01311756
zach.niles@jll.com
+1 949 885 2922
17877 Von Karman Ave.,
Suite 500
Irvine, CA 92614
www.jll.com

Prologis

Parker Hutchison
License #01875578
phutchison@prologis.com
+1 562 345 9209
17777 Center Court Dr N.,
Suite 100
Cerritos, CA 90703
www.prologis.com