

±388,183 SF

Industrial Space For Lease



Prologis Park Stockton 10

4601 Newcastle Road
Stockton, California



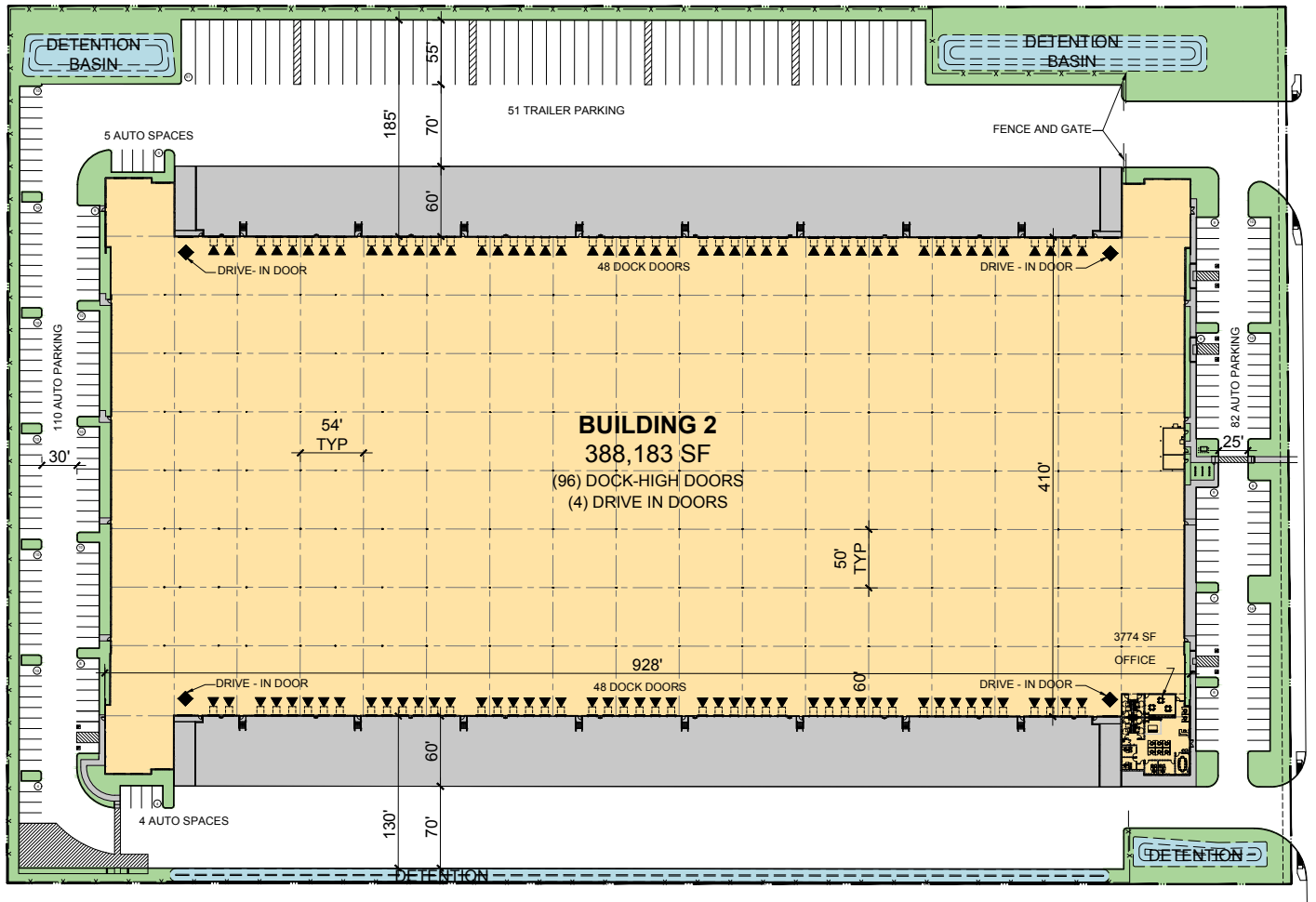
FACILITY

- ±388,183 SF Available Now
- Divisible to ±125,000 SF
- Dimensions: 410' x 920'
- Parcel Acres: ±18.9
- Office: ±3,774 SF
- 36' minimum interior ceiling clearance
- ESRF fire suppression system
- 50' x 54' column spacing
- 60' speed bays
- 7" DuctileCrete Engineered Slab
- 2,500 amps; 277/480 volts; 3 phase
- Cross-Load Design
- Ninety-six (96) 9' x 10' dock door positions
- Four (4) 12' x 14' grade level doors
- North: 186' truck court w/ 60' concrete apron
- South: 130' truck court w/ 60' concrete apron
- 204 Auto parking stalls
- 51 trailer parking stalls
- Designated Opportunity Zone

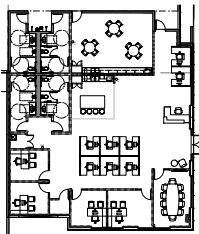
±388,183 SF



Industrial Space For Lease



Office: ±3,774 SF



Cushman & Wakefield
Kevin Dal Porto
Executive Managing Director
kevin.dalporto@cushwake.com
ph +1 209 601 2476
DRE Lic #01212935
3255 West March Lane Suite 230
Stockton, CA 95219

Cushman & Wakefield
Blake Rasmussen
Executive Managing Director
blake.rasmussen@cushwake.com
ph +1 209 481 7044
DRE Lic #01010250
3255 West March Lane Suite 230
Stockton, CA 95219

Cushman & Wakefield
John McManus, CCIM, MCR
Executive Managing Director
john.mcmanus@cushwake.com
ph +1 510 891 5817
DRE Lic #01129064
555 12th Street, Suite 1400
Oakland, CA 94607

Prologis
Matt Drury
Vice President, Market Officer
mdrury@prologis.com
ph +1 209 833 5389
DRE Lic #01901364
815 International Parkway
Tracy, CA 95377



±388,183 SF



Industrial Space For Lease



Cushman & Wakefield
Kevin Dal Porto
Executive Managing Director
kevin.dalporto@cushwake.com
ph +1 209 601 2476
DRE Lic #01212935
3255 West March Lane Suite 230
Stockton, CA 95219

Cushman & Wakefield
Blake Rasmussen
Executive Managing Director
blake.rasmussen@cushwake.com
ph +1 209 481 7044
DRE Lic #01010250
3255 West March Lane Suite 230
Stockton, CA 95219

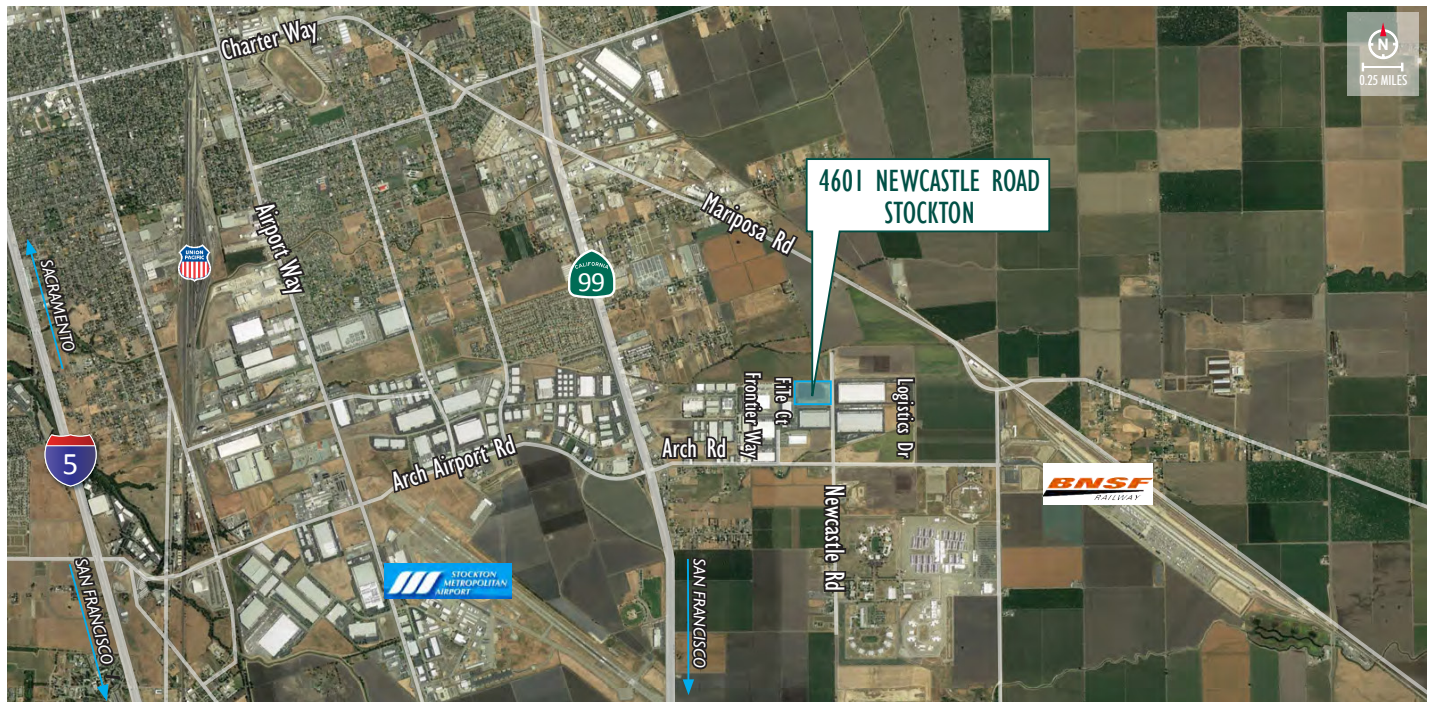
Cushman & Wakefield
John McManus, CCIM, MCR
Executive Managing Director
john.mcmanus@cushwake.com
ph +1 510 891 5817
DRE Lic #01129064
555 12th Street, Suite 1400
Oakland, CA 94607

Prologis
Matt Drury
Vice President, Market Officer
mdrury@prologis.com
ph +1 209 833 5389
DRE Lic #01901364
815 International Parkway
Tracy, CA 95377

±388,183 SF



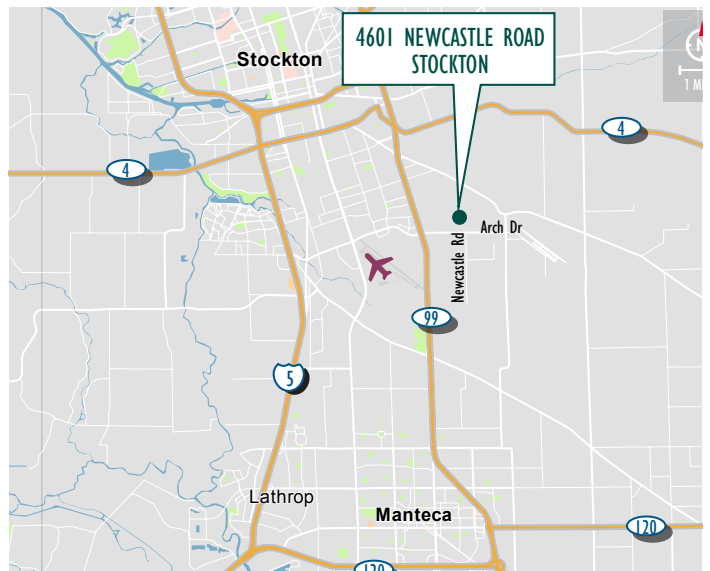
Industrial Space For Lease



AREA MAP



VICINITY MAP



Cushman & Wakefield
Kevin Dal Porto
Executive Managing Director
kevin.dalporto@cushwake.com
ph +1 209 601 2476
DRE Lic #01212935
3255 West March Lane Suite 230
Stockton, CA 95219

Cushman & Wakefield
Blake Rasmussen
Executive Managing Director
blake.rasmussen@cushwake.com
ph +1 209 481 7044
DRE Lic #01010250
3255 West March Lane Suite 230
Stockton, CA 95219

Cushman & Wakefield
John McManus, CCIM, MCR
Executive Managing Director
john.mcmanus@cushwake.com
ph +1 510 891 5817
DRE Lic #01129064
555 12th Street, Suite 1400
Oakland, CA 94607

Prologis
Matt Drury
Vice President, Market Officer
mdrury@prologis.com
ph +1 209 833 5389
DRE Lic #01901364
815 International Parkway
Tracy, CA 95377

