

# ±16,200 SF

## Industrial Space For Lease



## Prologis Park Newark

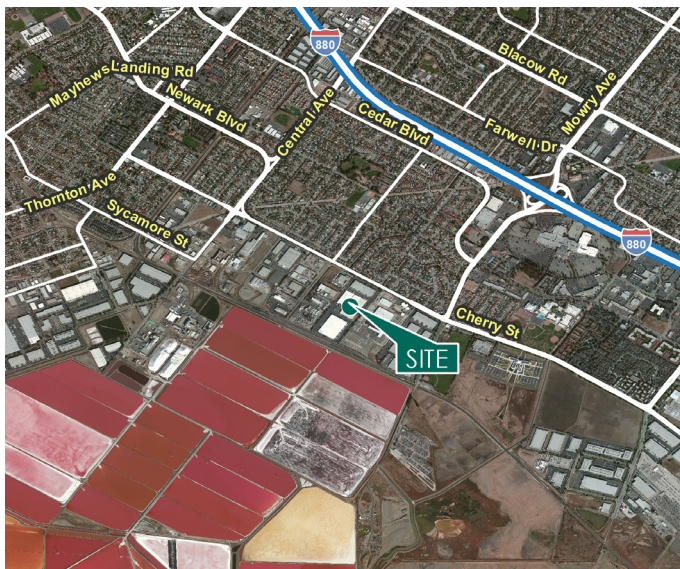
38505 Cherry Street, Unit A  
Newark, California USA

### LOCATION

- Located within one of Newark's top industrial parks, this industrial building offers a column free unit making the space versatile for all types of users.
- Excellent Access to I-880 via Mowry Ave & Thornton Ave

### FACILITY

- ±16,202 SF Portion of a Metal Building
- ±1,165 SF Office Area
- 22' Minimum Clear Height
- 2 Grade Level Doors
- 400 amps @ 480v Power
- Available July 15, 2019
- Asking Rate: \$0.65/SF NNN
- \$.26 PSF Operating Expenses



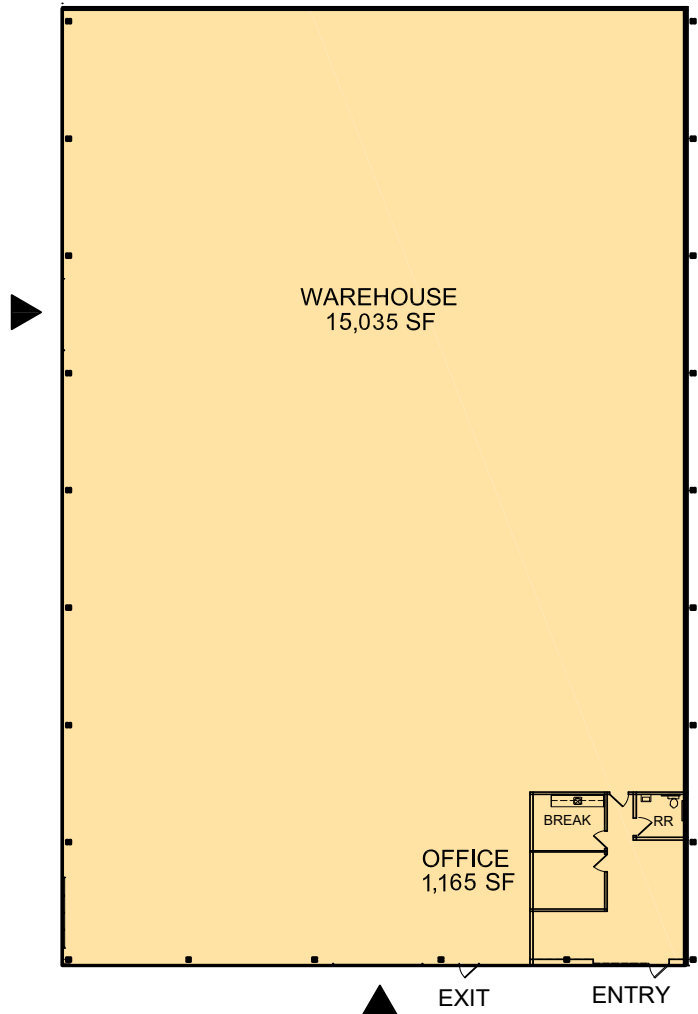
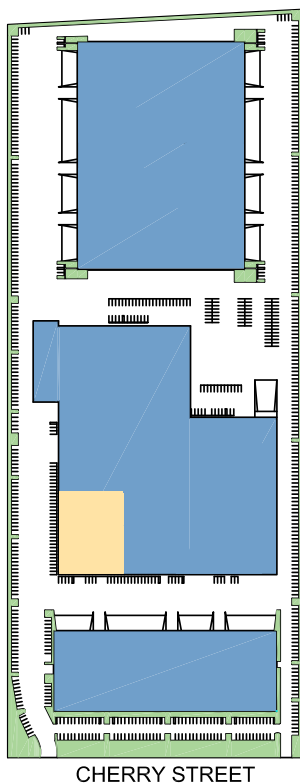
# ±16,200 SF

## Industrial Space For Lease



38505 CHERRY STREET, UNIT A  
NEWARK, CA  
+/- 16,200 SF

- AVAILABLE
- LEASED
- BACKGROUND LAND
- DOCK DOOR
- DRIVE-IN DOOR



**Cushman & Wakefield**  
Jay Hagglund, SIOR  
jay.hagglund@cushwake.com  
ph +1 510 267 6011  
cell +1 510 978 7922  
555 12th Street, Suite 1400  
Oakland, CA USA  
DIR Lic #00888011

**Cushman & Wakefield**  
Grant Hyjer  
grant.hyjer@cushwake.com  
ph +1 510 267 6023  
cell +1 925 788 6183  
555 12th Street, Suite 1400  
Oakland, CA USA  
DIR Lic #01956606

**Prologis**  
Matt Ebner  
Vice President  
mebner@prologis.com  
ph +1 510 661 4052  
3353 Gateway Blvd  
Fremont, CA 94538  
DIR Lic #01962626