

# 66,969 SF

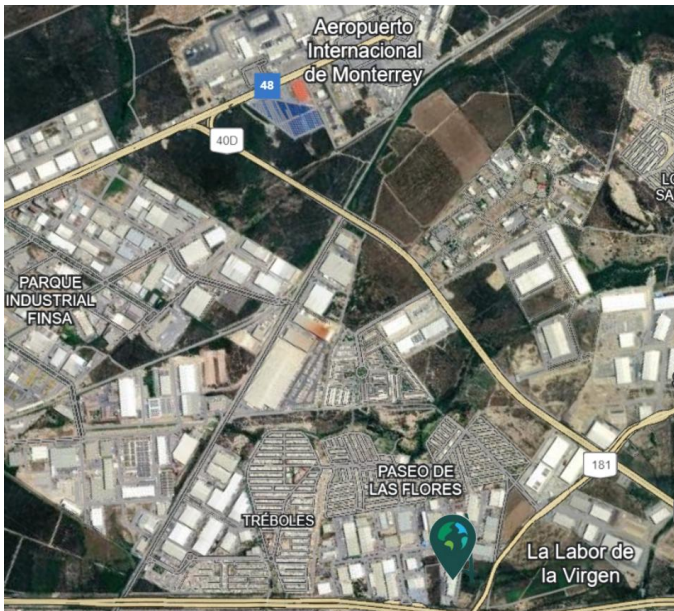
## Industrial Space For Lease



### Periferico Building 4



Calle Progreso #111 Parque Industrial la Silla Apodaca, N.L.  
66648



#### Location

- Strategic location in La Silla Industrial center, an ideal location for manufacturing, assembly, and logistics operations
- Direct access to Anillo Periférico (Monterrey Loop) Highway and through it to the Laredo and Reynosa Highways
- Proximity to the Mariano Escobedo International Airport

#### FACILITY

- Total building area: 133,904 SF.
- Office
- Concrete tilt-up walls
- LED interior lighting + natural light
- Hoses and cabinets as Fire Protection System
- 9 dock-high doors
- 1 Drive-in doors
- Car parking spaces

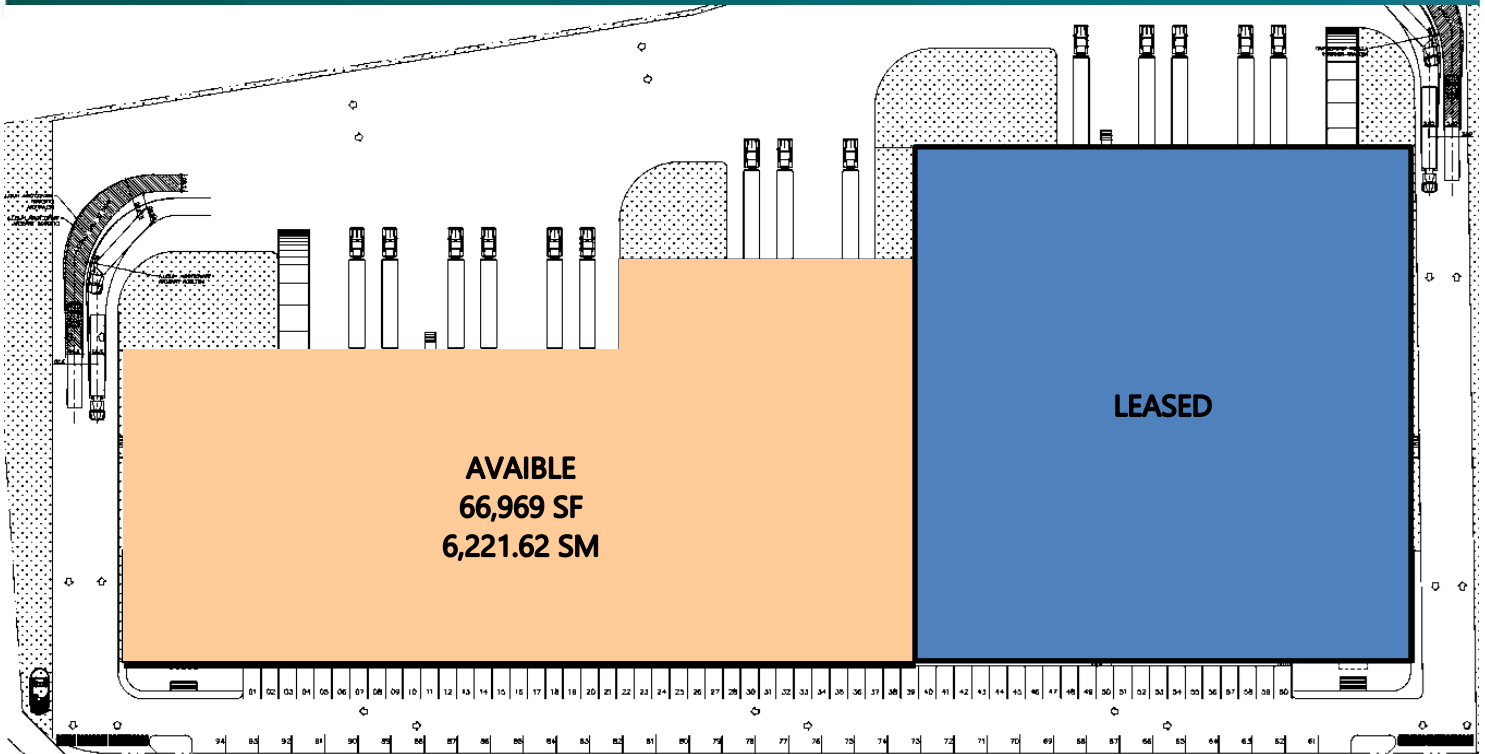
Your single-source service for efficient move-in and operations: [prologisessentials.com](http://prologisessentials.com)

# 66,969 SF

## Industrial Space For Lease



### Periferico Building 4



#### Prologis - Apodaca Office

Carretera Miguel Aleman KM 21  
Apodaca, Nuevo Leon, Mexico  
Main: +52 81 8004 8016

#### Leopoldo Otero

Director, Leasing  
[lotero@prologis.com](mailto:lotero@prologis.com)  
+52 81 8020 9556

#### Fernando Pedraza

Leasing Coordinator  
[fpedraza@prologis.com](mailto:fpedraza@prologis.com)  
+52 81 8684 5316

#### Corporate Headquarters

Pier 1, Bay 1  
San Francisco, CA 94111, USA  
Main: +1 415 394 9000  
[info@prologis.com](mailto:info@prologis.com)

#### Prologis - Mexico City

Paseo de los Tamarindos 90 Torre, 2, Piso 22  
Bosques de las Lomas, CDMX 05120, Mexico  
Main: +52 551 105 2900

[www.prologis.com](http://www.prologis.com) | NYSE: PLD  
Twitter: @Prologis