

# 4,676 SF

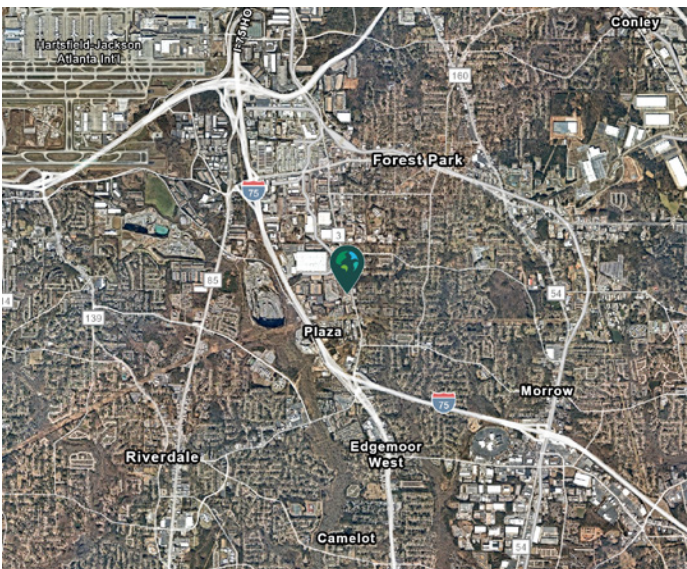
Industrial Space For Lease



## Prologis Southfield



5673 Old Dixie Highway, Suite 105  
Forest Park, GA 30297 USA



Scan the QR code for more info!

### LOCATION

- Key Distance
  - I-75: 0.9 miles
  - I-285: 2.7 miles
  - Hartsfield-Jackson Atlanta International Airport: 5.0 miles
  - I-85: 8.1 miles
- Tax Incentives: Clayton County is a designated Tier 1 county, \$3,500 per qualified job tax credit for up to 5 years

### FACILITY

- 34,288 SF building
- 4,676 SF available
  - 1,566 SF office
- Two (2) dock doors
- One (1) drive-in door
- 20' minimum clear height
- Power: 120/240V, 300A
- 150' truck court
- 120' building depth
- Seven (7) auto parking spaces
- Rear load configuration
- LED office and warehouse lights with motion sensors

### ADVANTAGES AND AMENITIES

- Fast, cost-effective forklift and racking sourcing through Prologis Essentials
- Prologis Clear Lease® – Know your lease expenses and capital costs with greater certainty before you sign

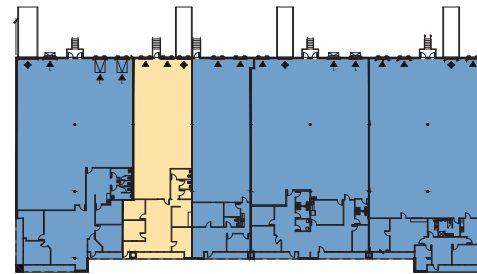
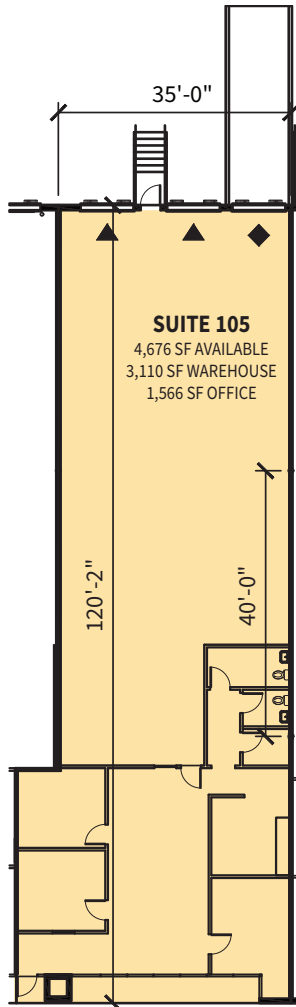
**Your single-source service for efficient move-in and operations: [prologisessentials.com](https://www.prologisessentials.com)**

# 4,676 SF

Industrial Space For Lease



## Prologis Southfield



KEY PLAN

LEGEND:

- ▲ DOCK DOOR
- ▲ DOCK DOOR W/LEVELER
- ◆ DRIVE-IN DOOR
- ▲ ON-GRADE DOOR
- ▬ EDGE OF DOCK
- ▽ PIT LEVELER
- LAND
- LEASED AREA
- VACANT AREA



**Seefried Industrial**  
**Joseph Kriss**

josephk@seefriedproperties.com  
ph +1 404 233 0204  
cell +1 678 362 4641  
3333 Riverwood Parkway SE  
Suite 200  
Atlanta, GA 30339 USA

**Seefried Industrial**  
**Tripp Ausband**

tausband@seefriedproperties.com  
ph +1 404 233 0204  
cell +1 770 825 3391  
3333 Riverwood Parkway SE  
Suite 200  
Atlanta, GA 30339 USA

**Prologis**  
**Sarah Stafford**

sstafford@prologis.com  
ph +1 404 760 7214  
cell +1 404 561 8378  
3350 Peachtree Road  
Suite 850  
Atlanta, Georgia 30326 USA