

25,880 SF

Industrial Space For Lease



Prologis Park Seattle 6



646 South Holgate Street
Seattle, WA 98057 USA

LOCATION

- IG1-U85 zoning

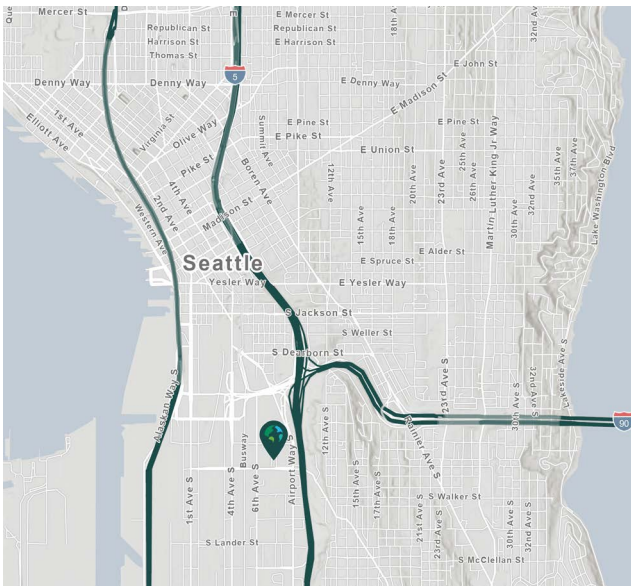
FACILITY

- Total Available Size: 25,880 SF
- Clear Height: 18'
- Loading: 20 Dock High Doors
- Rare In-City Cross-Dock
- 83,900 SF of Land

ADVANTAGES AND AMENITIES

- 56 Truck Spots
- Yard Area
- Potential Rail Access

Your single-source service for efficient move-in and operations: [prologisessentials.com](https://www.prologisessentials.com)

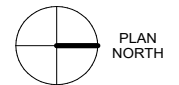
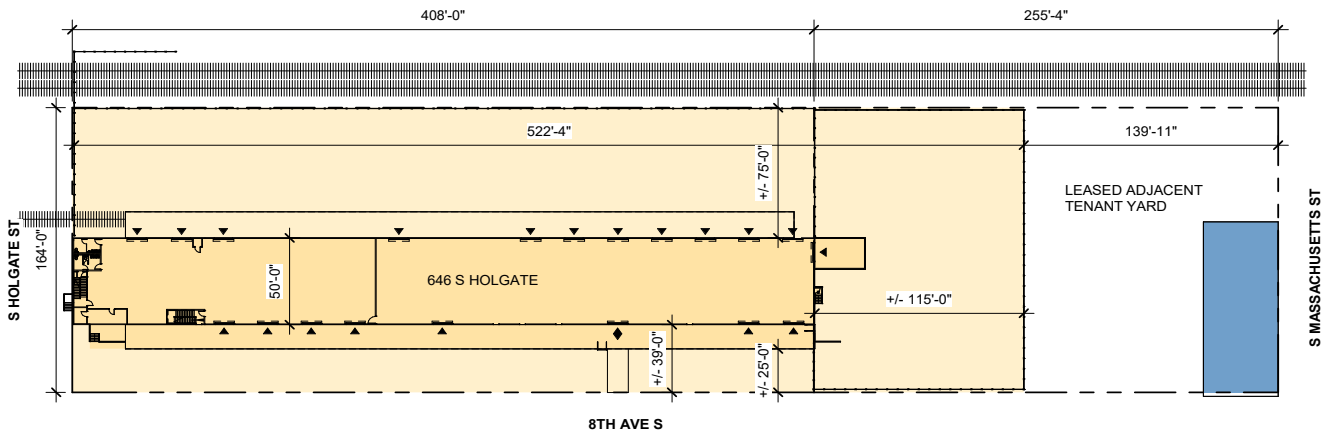
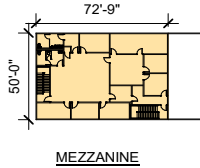


25,880 SF

Industrial Space For Lease



Prologis Park Seattle 6



NEWMARK

Newmark
Evan Lugar
evan.lugar@nrmk.com
ph +1 425 362 1403
10900 NE 4th St
Suite 1430
Bellevue, WA 98004 USA

Newmark
Josh Satterlee
josh.satterlee@nrmk.com
ph +1 425 362 1396
10900 NE 4th St
Suite 1430
Bellevue, WA 98004 USA

Prologis
Michelle Weeks
mweeks@prologis.com
ph +1 206 414 7631
33930 Weyerhaeuser Way S
Suite 100
Federal, WA 98001 USA

No warranty or representation, expressed or implied, is made as to the accuracy of the information contained herein, and same is submitted subject to error and omissions.

The information contained herein has been obtained from sources deemed reliable but has not been verified and no guarantee, warranty or representation, either express or implied, is made with respect to such information. Terms of sale or lease and availability are subject to change or withdrawal without notice.