

# 78,368 SF

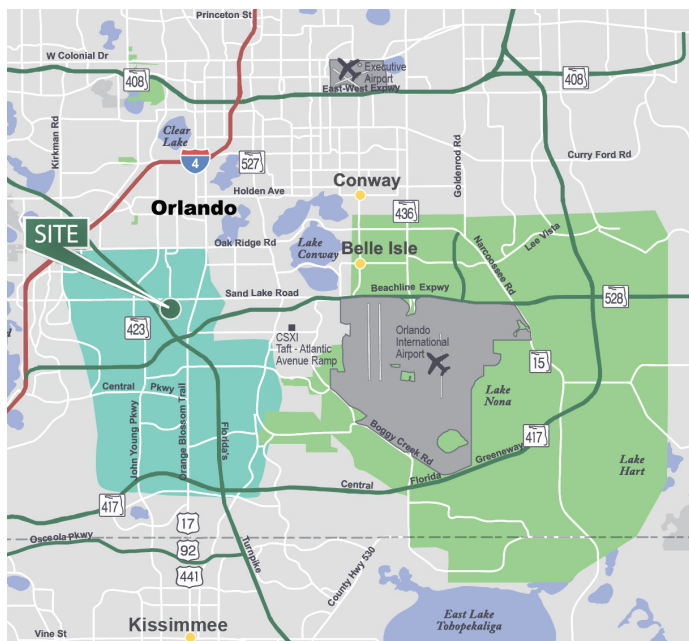
Industrial Space For Lease



## Prologis Orlando Central Park



2412-2416 Sand Lake Road  
Orlando, FL 32809 USA



### LOCATION

- Immediate access to Florida's Turnpike, Orange Blossom Trail (US 408) and Sand Lake Road
- Easy access to John Young Parkway and the Beachline Expressway (SR 528)
- Less than five miles to Interstate 4 (I-4)

### FACILITY

- 144,876 SF building
- Front loading
- 28' clear height
- 208' building depth
- 34'-6" x 29' column spacing (typical)
- 94' truck court

### SUITE 2416

- 78,368 SF available
- 1st floor office: 6,600 SF
- 2nd floor office: 6,600 SF
- 10 dock doors
- Two drive-in doors
- Four overhead doors

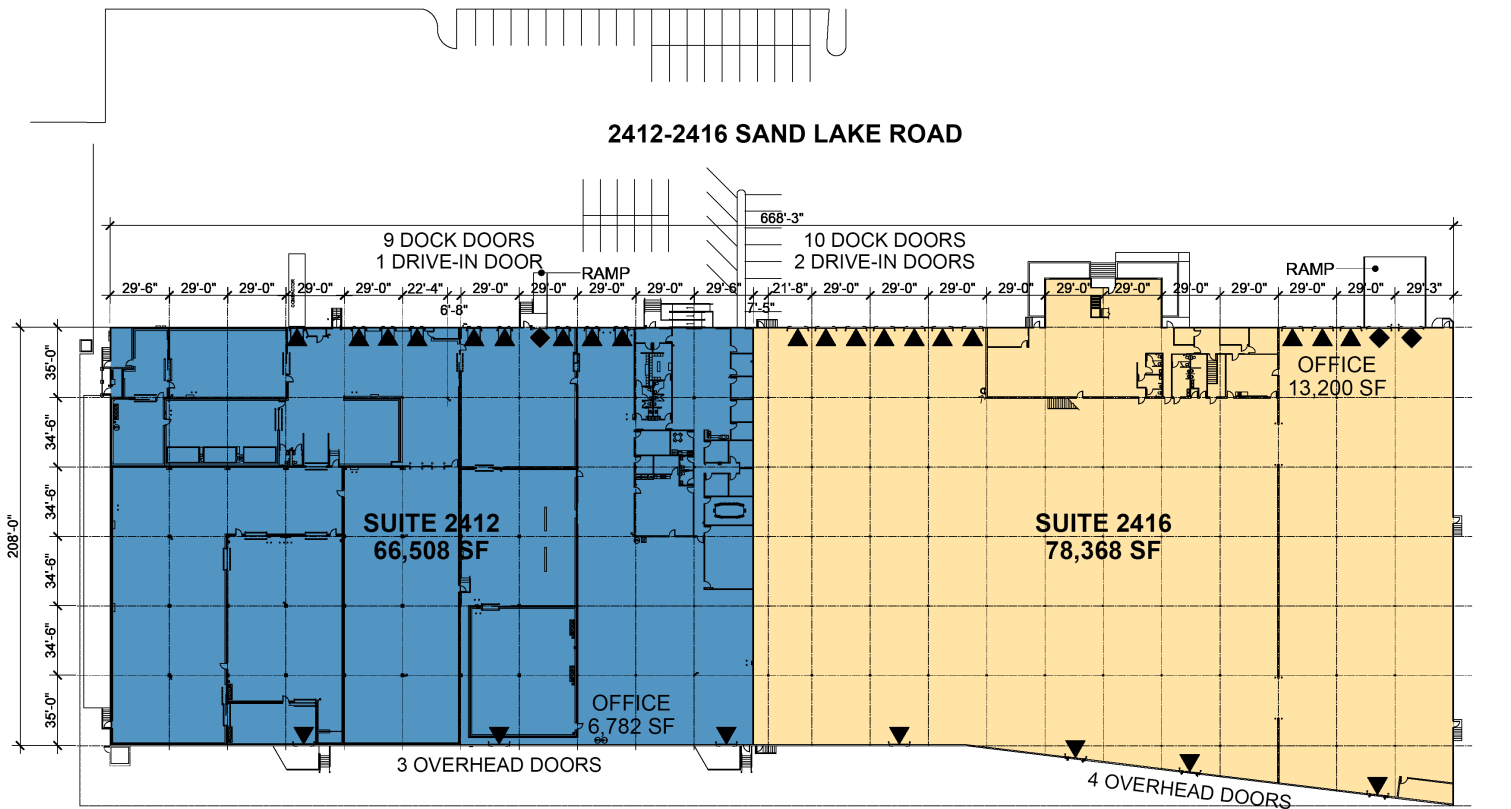
**Your single-source service for efficient move-in and operations: [prologisessentials.com](http://prologisessentials.com)**

# 78,368 SF

Industrial Space For Lease



## Prologis Orlando Central Park



### LEGEND

- AVAILABLE
- LEASED
- DOCK DOOR
- DRIVE-IN DOOR



#### Jones Lang LaSalle

Bobby Isola, SIOR, CCIM  
Bobby.Isola@jll.com  
+1 407.930.1804 phone  
250 S. Orange Avenue, Suite 700  
Orlando, FL 32801 USA

#### Jones Lang LaSalle

Kristin Bailey  
Kristin.Bailey@jll.com  
+1 407.930.7103 phone  
250 S. Orange Avenue, Suite 700  
Orlando, FL 32801 USA



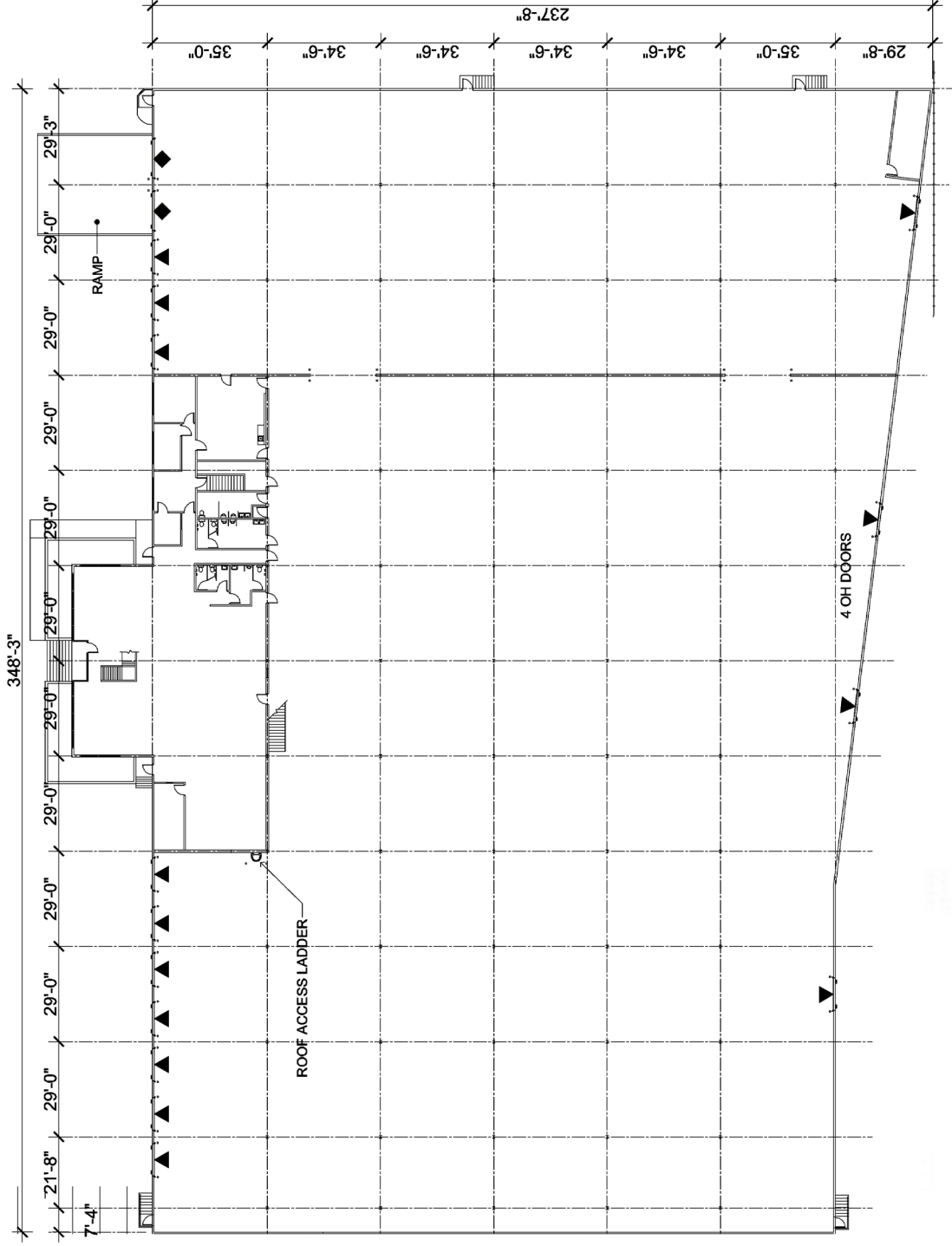
**Prologis Orlando Central Park**  
 2416 Sand Lake Road  
 Orlando, FL 32809 USA

1ST FLOOR OFFICE: 6,600 SF  
 2ND FLOOR OFFICE: 6,600 SF  
 WAREHOUSE: 65,168 SF  
**TOTAL: 78,368 SF**

DOCK DOORS: 10

OVERHEAD DOORS: 4

DRIVE-IN DOORS: 2

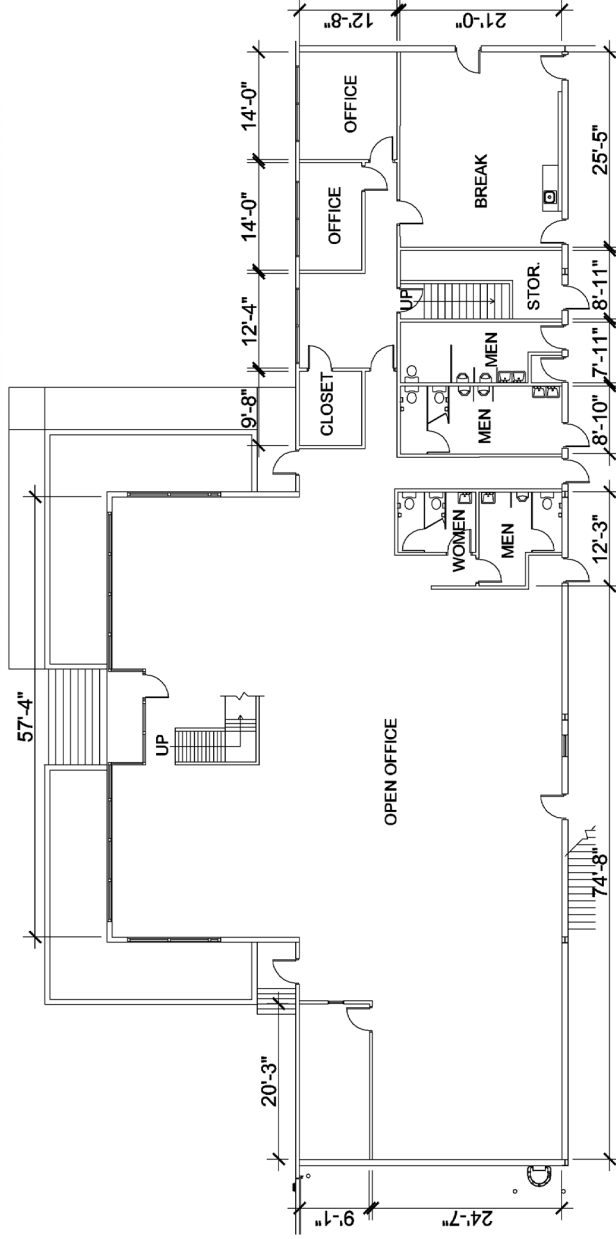




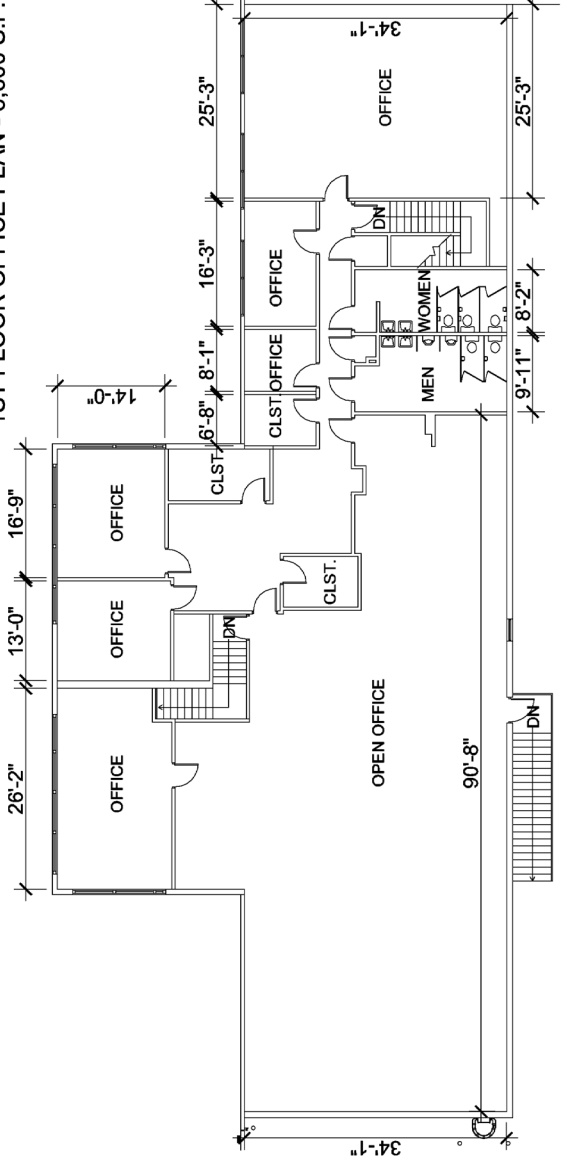
Prologis Orlando Central Park  
 2416 Sand Lake Road  
 Orlando, FL 32809 USA

1ST FLOOR OFFICE: 6,600 SF  
 2ND FLOOR OFFICE: 6,600 SF  
 WAREHOUSE: 65,168 SF  
 TOTAL: 78,368 SF

OFFICE PLANS



1ST FLOOR OFFICE PLAN - 6,600 S.F.



2ND FLOOR OFFICE PLAN - 6,600 S.F.