

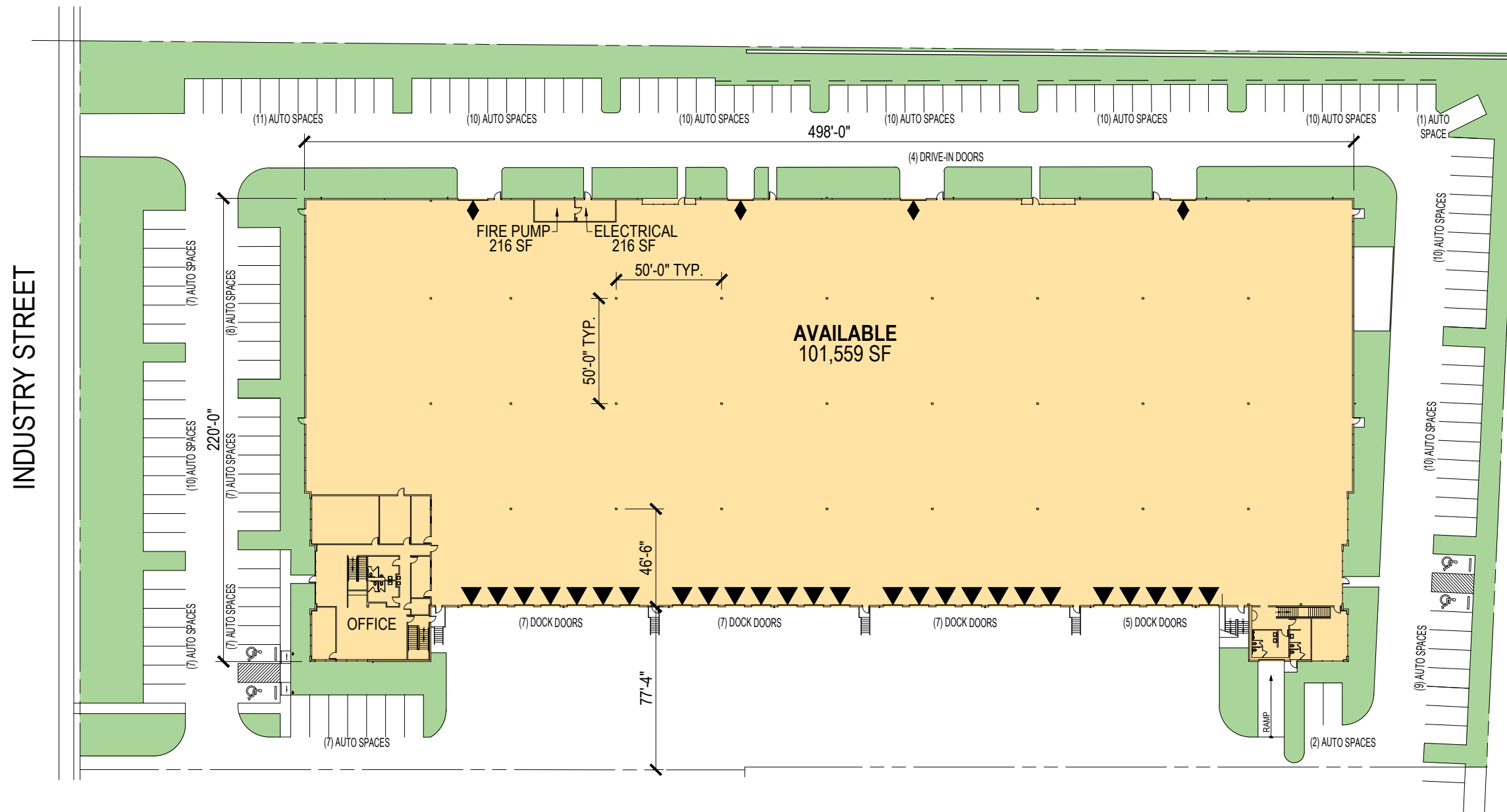
NOTE: THIS CONCEPTUAL PLAN IS FOR MARKETING PURPOSES ONLY AND HAS BEEN PREPARED BASED ON PRELIMINARY AVAILABLE SITE INFORMATION DEEMED RELIABLE. ALL DIMENSION AREA CALCULATIONS ARE SUBJECT TO VERIFICATION BY A PROFESSIONAL ENGINEER FOR COMPLIANCE WITH ALL FEDERAL, STATE, AND LOCAL REGULATIONS.

**PROLOGIS  
EVERETT 1  
(sea00511)**

**1200 INDUSTRY ST.  
EVERETT, WA 98203**

TOTAL BUILDING FOOTPRINT:	101,559 SF
OFFICE SPACE:	4,588 SF
MEZZANINE 1:	2,970 SF
WAREHOUSE SPACE:	96,971 SF
MEZZANINE 2:	1,196 SF

AUTO PARKING:	146
DOCK DOORS:	26
DRIVE-IN DOORS:	4
TYPICAL SPEED BAY DEPTH:	±46'-6"
TYPICAL COLUMN SPACING:	±50'-0" X 50'-0"



**LEGEND:**

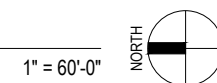
- ▼ DOCK DOOR  
L = LEVELER
- ◆ DRIVE-IN DOOR
- AVAILABLE AREA
- LEASED AREA
- LAND

**PROLOGIS®**  
5900 AIRPORT WAY S, SUITE 300  
SEATTLE, WA 98108

**B BURGESS DESIGN**  
INTERIORS + ARCHITECTURE

DATE: MARCH 06, 2026

OVERALL PLAN



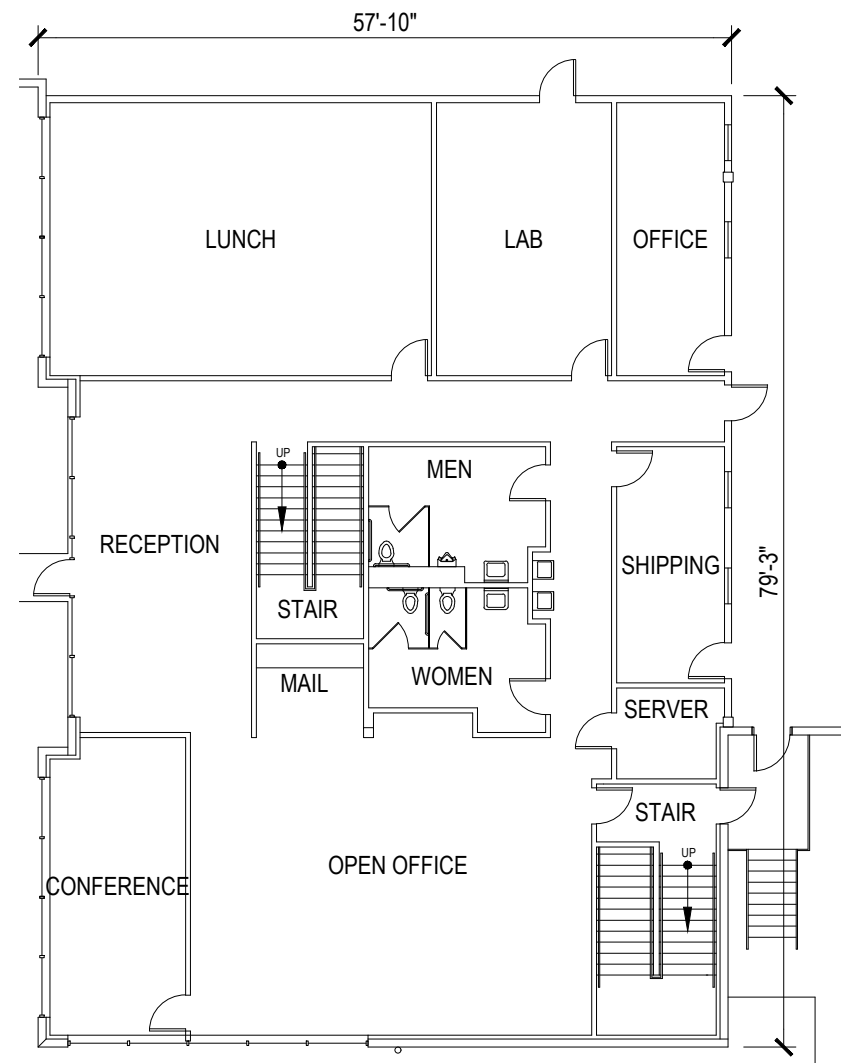
NOTE: THIS CONCEPTUAL PLAN IS FOR MARKETING PURPOSES ONLY AND HAS BEEN PREPARED BASED ON PRELIMINARY AVAILABLE SITE INFORMATION DEEMED RELIABLE. ALL DIMENSION AREA CALCULATIONS ARE SUBJECT TO VERIFICATION BY A PROFESSIONAL ENGINEER FOR COMPLIANCE WITH ALL FEDERAL, STATE, AND LOCAL REGULATIONS.

**PROLOGIS  
EVERETT 1  
(sea00511)**

**1200 INDUSTRY ST.  
EVERETT, WA 98203**

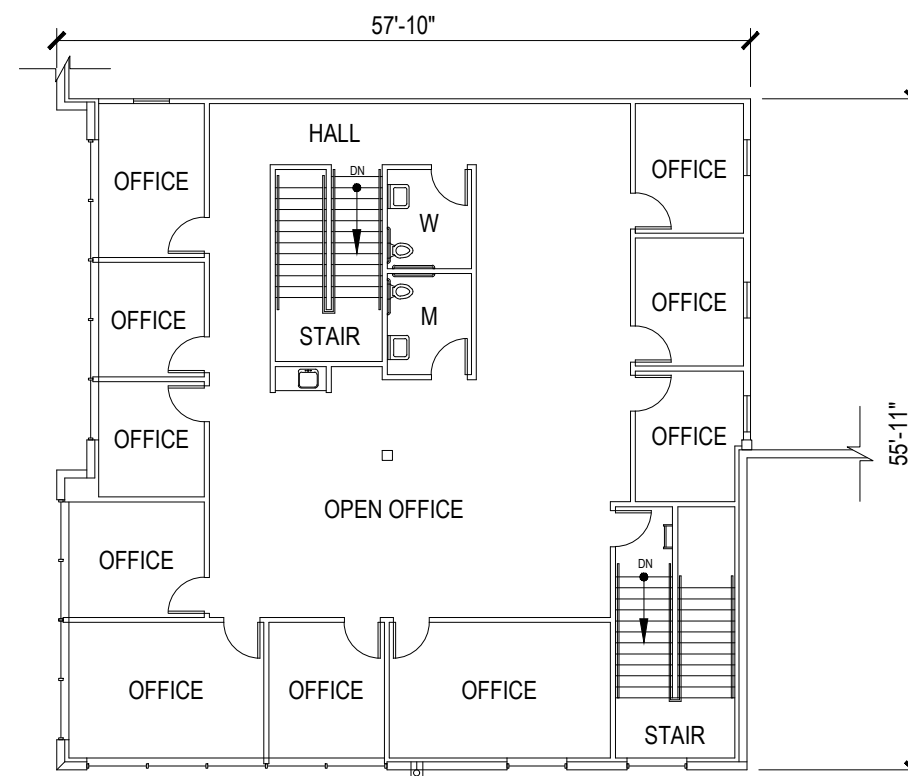
TOTAL BUILDING FOOTPRINT: 101,559 SF  
 OFFICE SPACE: 4,588 SF  
 MEZZANINE 1: 2,970 SF  
 WAREHOUSE SPACE: 96,971 SF  
 MEZZANINE 2: 1,196 SF

AUTO PARKING: 146  
 DOCK DOORS: 26  
 DRIVE-IN DOORS: 4  
 TYPICAL SPEED BAY DEPTH: ±46'-6"  
 TYPICAL COLUMN SPACING: ±50'-0" X 50'-0"



OFFICE PLAN

1/16"=1'-0"



OFFICE MEZZANINE PLAN

1/16"=1'-0"



LEGEND:

- ▼ DOCK DOOR  
L = LEVELER
- ◆ DRIVE-IN DOOR

- AVAILABLE AREA
- LEASED AREA
- LAND



5900 AIRPORT WAY S, SUITE 300  
SEATTLE, WA 98108



DATE: MARCH 06, 2026

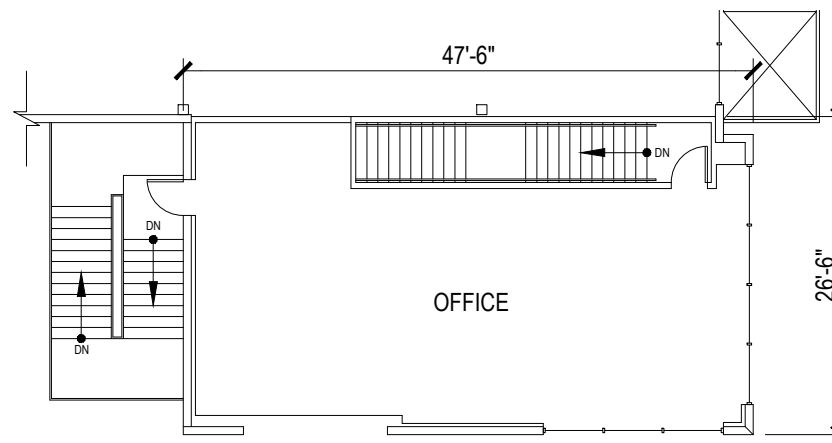
NOTE: THIS CONCEPTUAL PLAN IS FOR MARKETING PURPOSES ONLY AND HAS BEEN PREPARED BASED ON PRELIMINARY AVAILABLE SITE INFORMATION DEEMED RELIABLE. ALL DIMENSION AREA CALCULATIONS ARE SUBJECT TO VERIFICATION BY A PROFESSIONAL ENGINEER FOR COMPLIANCE WITH ALL FEDERAL, STATE, AND LOCAL REGULATIONS.

**PROLOGIS  
EVERETT 1  
(sea00511)**

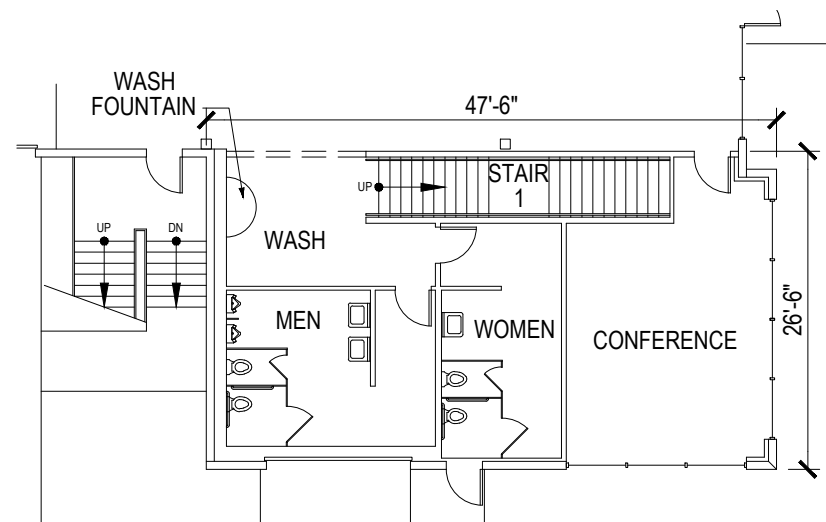
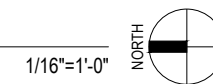
**1200 INDUSTRY ST.  
EVERETT, WA 98203**

TOTAL BUILDING FOOTPRINT:	101,559 SF
OFFICE SPACE:	4,588 SF
MEZZANINE 1:	2,970 SF
WAREHOUSE SPACE:	96,971 SF
MEZZANINE 2:	1,196 SF

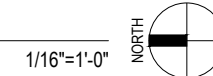
AUTO PARKING:	146
DOCK DOORS:	26
DRIVE-IN DOORS:	4
TYPICAL SPEED BAY DEPTH:	±46'-6"
TYPICAL COLUMN SPACING:	±50'-0" X 50'-0"



**OFFICE MEZZANINE PLAN**



**OFFICE PLAN**



**LEGEND:**

- ▼ DOCK DOOR  
L = LEVELER
- ◆ DRIVE-IN DOOR

- AVAILABLE AREA
- LEASED AREA
- LAND

5900 AIRPORT WAY S, SUITE 300  
SEATTLE, WA 98108

DATE: MARCH 06, 2026